



**€450,000**

**Ref: PW98**

**153 sqm**

Located in Silves, one of the most medieval cities in Portugal, full of history and charm, this unique Golf Resort is definitely a plus in a city whose character speaks for itself.

**Telephone: +351 213 471 603**  
**Email: [info@portugalhomes.com](mailto:info@portugalhomes.com)**

Praça da Alegria 1, 3rd Floor, 1250-004 Lisboa, Portugal Licence AMI - 14414 | APEMIP 5940



## Property Description

Located in Silves, one of the most medieval cities in Portugal, full of history and charm, this unique Golf Resort is definitely a plus in a city whose character speaks for itself.

Molded by the Monchique mountains, the Silves castle and the Arade river, the brand new Silves Golf Resort will have 178 units with a total construction area of 52,898 sqm on a 1,718,673 sqm plot.

These stylish modern villas with wide open windows were design to capture and optimize the best views and as much sunlight possible. With 2 ensuite bedrooms, the master one with a walk in closet, plus one more room that can be used as an office. The entry hall gives direct access to the spacious living, dining and kitchen area, where, again the big windows allow us to have privileged views over the garden and the swimming pool\*.

Also with laundry and storage room.

\*Private swimming pool for an extra cost between € 10,000 and € 20,000.

The owners can use the two clubhouses with restaurants and communal swimming pools.

Have a look at other [properties for sale in Silves](#) and [houses & villas in the Algarve](#).

Learn more about the region in our [guide to the Algarve](#).



Gallery

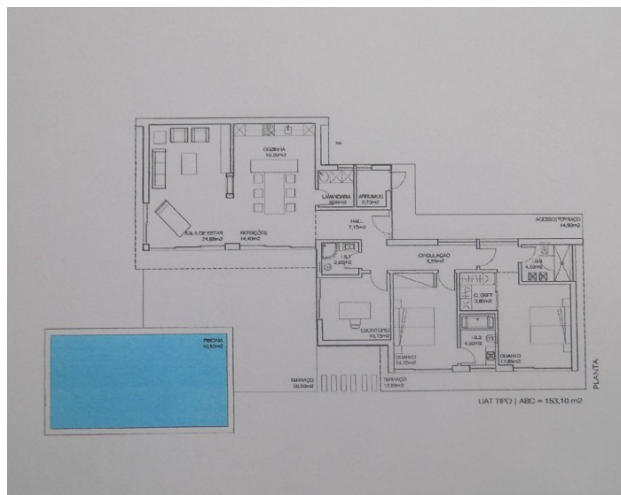


## Additional Details

Attributes

<div>Status</div> <div>Pre-Reserved</div>	<div>Net Area</div> <div>153sq m</div>	<div>Gross Area</div> <div>153sq m</div>
<div>Condition</div> <div>New</div>	<div>Year Built</div> <div>2018</div>	

## Site Floorplan



**Telephone: +351 213 471 603**  
**Email: [info@portugalhomes.com](mailto:info@portugalhomes.com)**

Praça da Alegria 1, 3rd Floor, 1250-004 Lisboa, Portugal Licence AMI - 14414 | APEMIP 5940

