



Belas Golf Club Apartments

€390,000 -
€840,000

Ref: PW63

169 sqm

One, Two and Three Bedroom Apartments In Amazing Golf Club

- Outside
- Pool
- Amenities
- Central heating
- Storage
- Concierge Service

Telephone: +351 213 471 603
Email: info@portugalhomes.com

Praça da Alegria 1, 3rd Floor, 1250-004 Lisboa, Portugal Licence AMI - 14414 | APEMIP 5940



Property Description

With an amazing contemporary design these apartments are filled with architectonic features of simplicity involving the nature and its green surroundings. Here you will find great finishes, studied to the most minimal detail. These apartments with its beautiful terraces overlooking the Natural Park of Sintra, represent a great investment to those who wish to be part of the nature area while being close to the city center. These apartments have three bedrooms, one of them a suite with a terrace, a fully equipped kitchen, storage room, private parking place, a terrace with 69sqm surrounding the entire apartment.

This Club has its private wellness & sports center, cycle way, security, 4 tennis courts, football field, beach volley, pools, hairstylist, coffee shop, minimarket and also its own Bus service to take you to Colombo Shopping Centre (10 minutes) one of the most important Shopping Centers in Portugal.

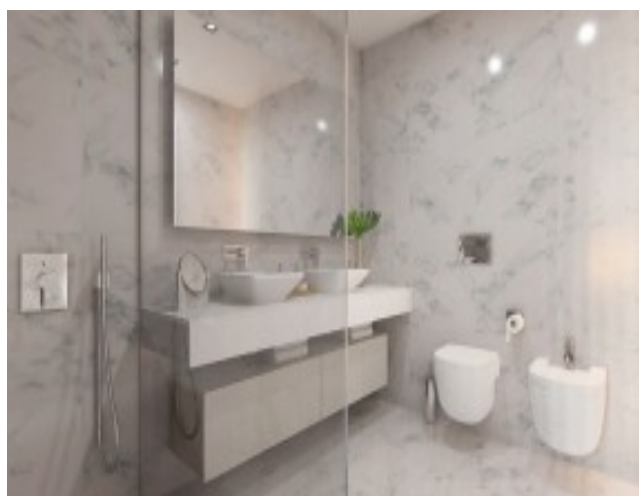
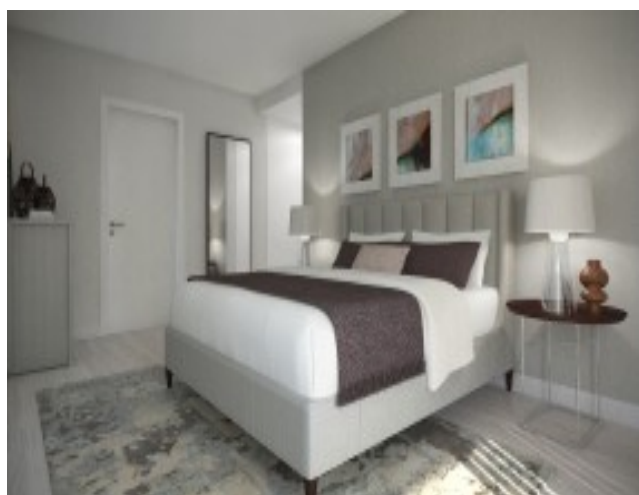
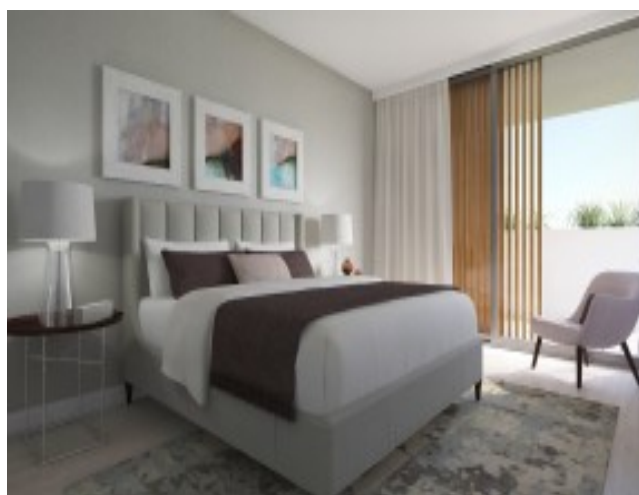
The surroundings of this development offer one of the most privileged views of the Sintra Natural Park, and its peace and quiet. Without being too far away from the city center.

Only within a 15-minute drive you will find yourself at the Airport and the most emblematic square of Lisbon's downtown area, Marquês de Pombal.

Check our other [properties for sale around Sintra](#) and [houses in Belas town](#).

Find more information about the area in [our guide to Sintra](#).

Gallery



Telephone: +351 213 471 603
Email: info@portugalhomes.com

Praça da Alegria 1, 3rd Floor, 1250-004 Lisboa, Portugal Licence AMI - 14414 | APEMIP 5940



Additional Details

Attributes

Net Area 169sq m	Gross Area 169sq m	Floors 1
Year Built 2018		

Property Features

Outside	Pool	Amenities
Central heating	Storage	Concierge Service
Closed Condominium	Lift	Balcony
Gym	Fireplace	Alarm
Street Parking	Outdoor Parking	Covered Parking

New Development Features

Development Units

Fraction	Bedrooms	Floor Size	Price
AoD	2	342 sqm	€630,000
AoE	1	160 sqm	€390,000
A1D	2	166 sqm	€585,000
A1E	2	153 sqm	€545,000
A2D	2	176 sqm	€610,000
A2E	2	145 sqm	€570,000
A3D	2	166 sqm	€650,000
A3E	2	153 sqm	€610,000
BoD	1	160 sqm	€400,000
BoE	1	308 sqm	€410,000
B1D	2	158 sqm	€570,000
B1E	3	232 sqm	€750,000
B2D	2	158 sqm	€595,000
B2E	3	228 sqm	€785,000
B3D	2	155 sqm	€635,000
B3E	3	232 sqm	€840,000

Site Floorplan

