



€1,040,000

Ref: PW60

262 sqm

Top investment opportunity

Telephone: +351 213 471 603  
Email: [info@portugalhomes.com](mailto:info@portugalhomes.com)

Praça da Alegria 1, 3rd Floor, 1250-004 Lisboa, Portugal Licence AMI - 14414 | APEMIP 5940



## Property Description

This new development is located in the heart of Lisbon, close by the cathedral Sé and the cosy square *Campo das Cebolas* .

The century old and traditional facades of the building were preserved, although all apartments were completely refurbished.

This building includes 4 lofts and a cosy patio.

From these duplexes 3 of them and feature 1 bedroom, 1 bathroom and a bright living room with an open kitchen.

The other duplex feats 2 bedrooms, 1 bathroom and a cosy living room as well.

About to be completes this property is a great investment opportunity.

You can also view our other [properties for sale in Lisbon](#) and [apartments in Baixa neighbourhood](#).

To get familiar with the area - read our [guide to Baixa](#) and [explore Lisbon](#).



Gallery

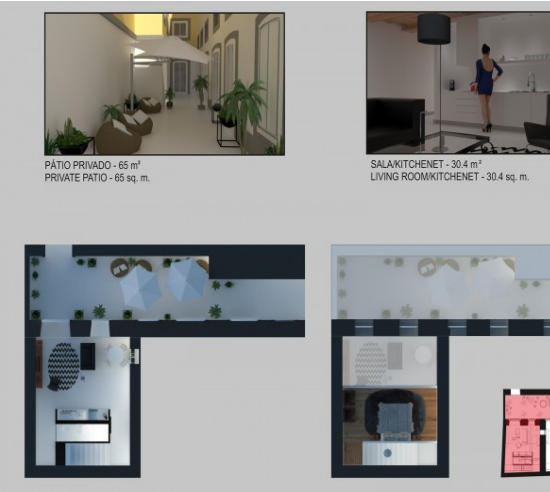
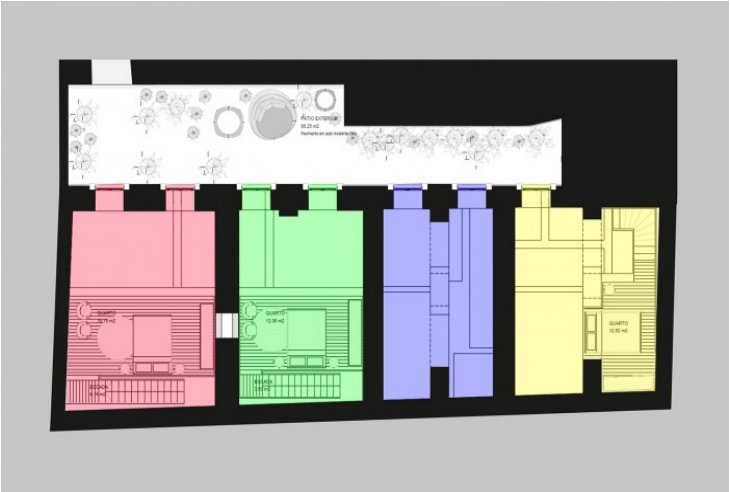
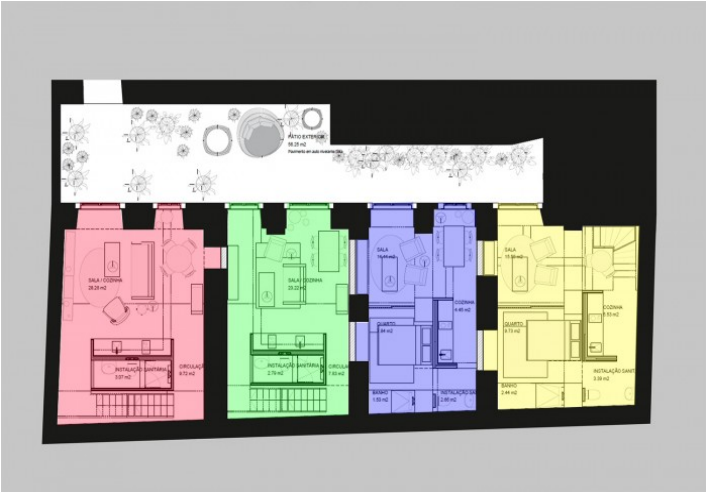


## Additional Details

Attributes

<div>Status</div> <div>Sold</div>	<div>Net Area</div> <div>262sq m</div>	<div>Gross Area</div> <div>262sq m</div>
<div>Floors</div> <div>2</div>	<div>Year Built</div> <div>2018</div>	

# Site Floorplan



Telephone: +351 213 471 603  
Email: [info@portugalhomes.com](mailto:info@portugalhomes.com)

Praça da Alegria 1, 3rd Floor, 1250-004 Lisboa, Portugal Licence AMI - 14414 | APEMIP 5940

