

€430,000

Ref: PW56

100 sqm

Beautiful 2 bedroom apartment located in the city center and with Castle Views.

Telephone: +351 213 471 603  
Email: [info@portugalhomes.com](mailto:info@portugalhomes.com)

Praça da Alegria 1, 3rd Floor, 1250-004 Lisboa, Portugal Licence AMI - 14414 | APEMIP 5940



## Property Description

Beautiful 2 bedroom apartment located in the city center and with Castle Views. This amazing apartment was recently renovated, keeping its original historic characteristics, such as the painting in the walls and the wooden floor. This apartment opens into a reception room where we can find the living room with plenty of natural light, the apartment has great sun exposure. The living room has views overlooking the famous Castle of São Jorge and its beautiful hills. The apartment has two bedrooms, one with ensuite bathroom. The second bathroom is located in the hallway between the kitchen and the second bedroom. The kitchen area is fully equipped with appliances, also the apartment is set with heating system. The building maintains its historical features.

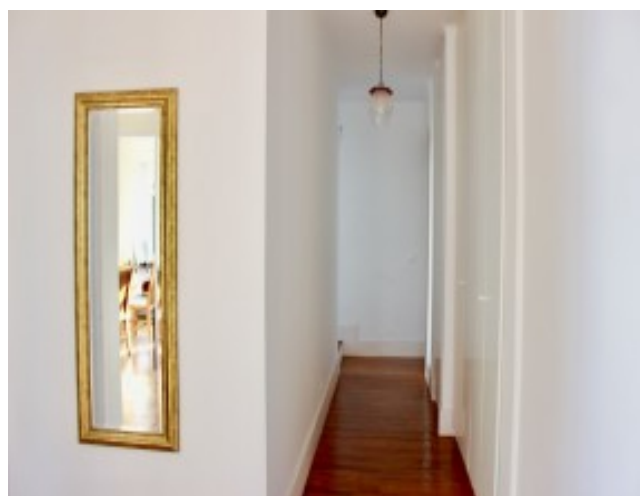
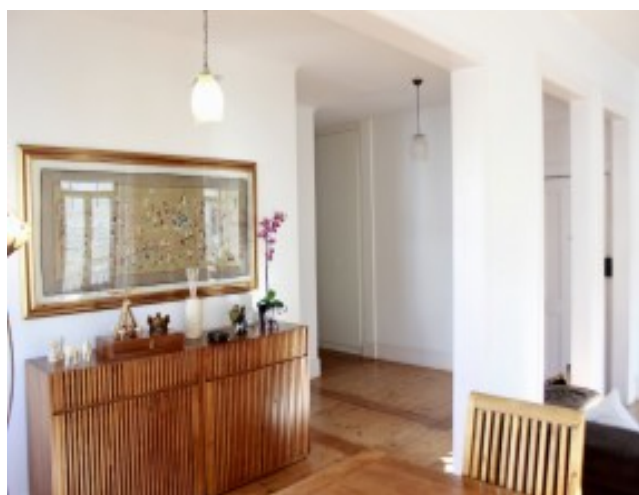
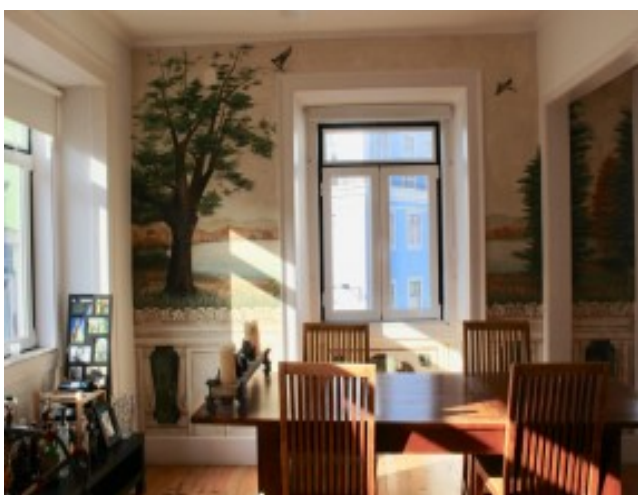
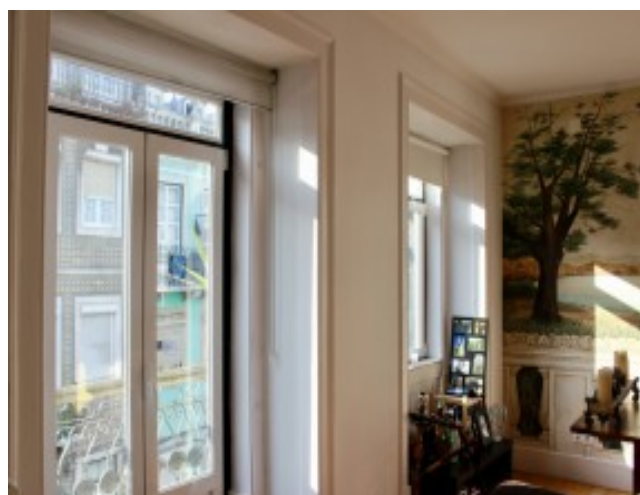
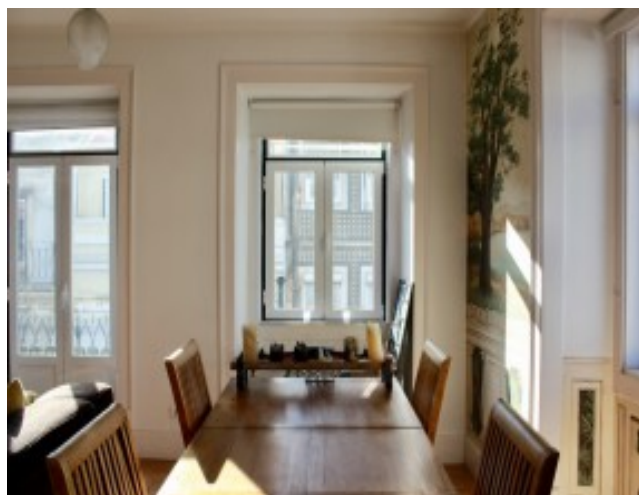
Martim Moniz is one of the most emblematic squares of Lisbon. From here you have the most privileged view to the Castle of São Jorge and within a 4 minute walk you can find all the connections necessary to move around the city (bus, metro, train). Within a few steps from the apartment you have the stop for the famous tram 28 (tram that connects the Castle to Estrela). In the main square of Martim Moniz you have a metro station and also the central train station of Rossio (5 minute walk) that will take you to the mystical Sintra.

Check our other [properties for sale around Martim Moniz area](#) and [apartments across the Lisbon](#).

You can also find more information about the city in [our Lisbon guide](#).



## Gallery



Telephone: +351 213 471 603  
Email: [info@portugalhomes.com](mailto:info@portugalhomes.com)

Praça da Alegria 1, 3rd Floor, 1250-004 Lisboa, Portugal Licence AMI - 14414 | APEMIP 5940

## Additional Details

Attributes

<b>Status</b> Sold	<b>Net Area</b> 100sq m	<b>Gross Area</b> 100sq m
<b>Floors</b> 1	<b>Condition</b> Refurbished	<b>Year Built</b> 1993

# Site Floorplan

