

# €480,000

Ref: PW481

100 sqm

This 6 bedroom apartment in a central and cosmopolitan part of the city is a perfect investment for room rentals.

- Central heating

Telephone: +351 213 471 603

Email: [info@portugalhomes.com](mailto:info@portugalhomes.com)

Praça da Alegria 1, 3rd Floor, 1250-004 Lisboa, Portugal Licence AMI - 14414 | APEMIP 5940



## Property Description

Santa Catarina is a typical Lisbon neighbourhood, with narrow cobbled streets, historic buildings and some landmarks too - like the Santa Catarina viewpoint, for instance. Lisbon is known as the city of seven hills, so be prepared for steep walks up and down the streets or stairways.

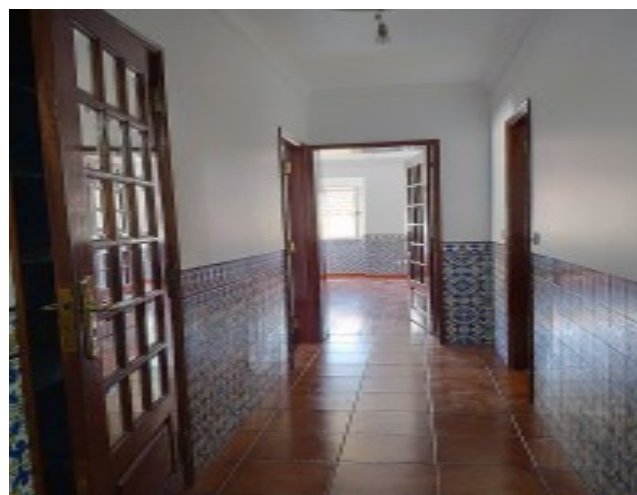
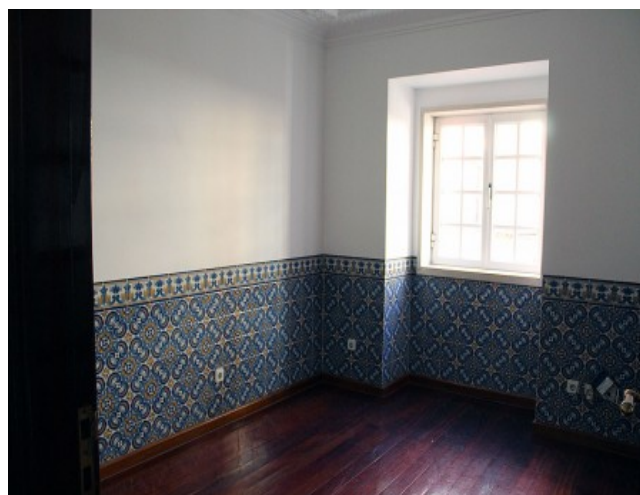
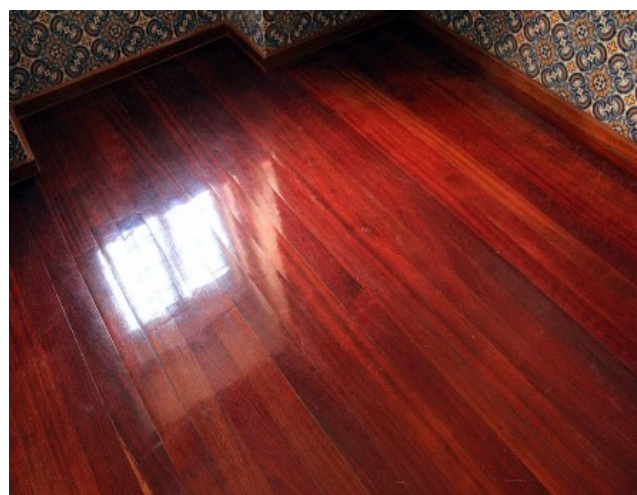
Santa Catarina is very near to some of the most active nightlife spots in Lisbon, such as Bairro Alto, Bica and Cais do Sodré. There are plenty of options to go out for fun at night with friends near this apartment. Also, the public transportation offer is very rich, Santa Catarina is well supplied by the bus network and the Baixa-Chiado and Cais do Sodré Metro stations are not far away neither. Further to the west, you can find the Santos district, which is considered to be the design district of the city for concentrating there a cluster of design companies and shops coupled with great river views.

This apartment has 6 bedrooms that can easily be rented to students or workers, due to its centrality, closeness to public transportation and rich nightlife.

Find our other [properties for sale around Santa Catarina area](#) and [houses around Lisbon](#). Read more information about the city in [guide to Lisbon](#).



## Gallery



Telephone: +351 213 471 603  
Email: [info@portugalhomes.com](mailto:info@portugalhomes.com)

Praça da Alegria 1, 3rd Floor, 1250-004 Lisboa, Portugal Licence AMI - 14414 | APEMIP 5940

## Additional Details

### Attributes

<b>Status</b> Sold	<b>Net Area</b> 100sq m	<b>Gross Area</b> 100sq m
<b>Floors</b> 1	<b>Condition</b> Used	

### Property Features

Central heating
-----------------

# Site Floorplan