

Gloria 14

Graça

POA

Ref: PW480

Located in one of the most typical and engaging neighbourhoods of Lisbon, the building Gloria 14 emerges in the midst of authenticity, on one of the seven hills of the city, between Alfama, São Jorge Castle and the Mou

Telephone: +351 213 471 603

Email: info@portugalhomes.com

Avenida da Liberdade 67B, 5th Floor, 1250-140 Lisboa, Portugal Licence AMI - 14414 | APEMIP 5940



Property Description

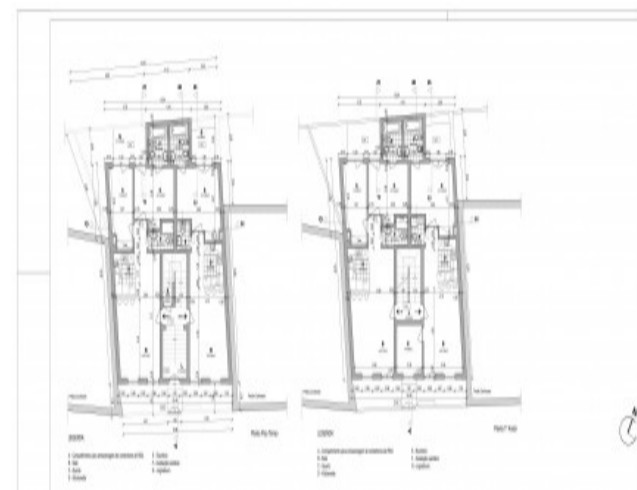
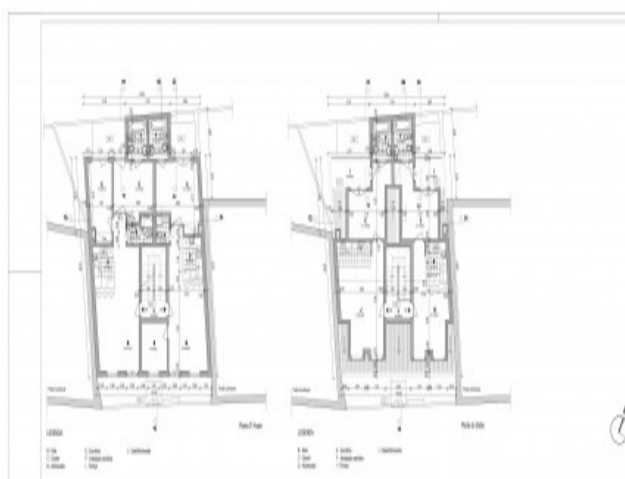
Located in one of the most typical and engaging neighbourhoods of Lisbon, the building Gloria 14 emerges in the midst of authenticity, on one of the seven hills of the city, between Alfama, São Jorge Castle and the Mouraria. Here, you will find a traditional lifestyle, with its own beat and surrounded by the most beautiful views over the river and city.

It is in Graça, where the traditional and charismatic tram number 28 passes by, that the building Gloria 14 was entirely rebuilt, seeking a perfect setting in the nineteenth century architectural complex that is classified and protected by Lisbon City Council.

A building with a totally new structure and the most modern equipment, composed of T1 and T2 apartments 50 to 71 sqm.

Eligible for 350k Golden Visa.

Completion April 2020.



Additional Details

Attributes

Property Condition New	Parking No	Year Built 2020
Air Conditioning Yes		

New Development Features

Completion Date 2020
Zone Graça
Features Show Sold

Development Units

Property Name	Property Type	Bedrooms	Floor Size	Price
Unit A	Apartment	1	57,93 sqm	Reserved
Unit B	Apartment	2	70,93 sqm	Reserved
Unit C	Apartment	2	71,16 sqm	Reserved
Unit D	Apartment	2	64,99 sqm	Sold
Unit E	Apartment	2	71,16 sqm	Reserved
Unit F	Apartment	2	64,99 sqm	Reserved
Unit G	Apartment	1	51,61 sqm	Sold
Unit H	Apartment	1	43,63 sqm	Sold