



€3,300,000

Ref: PP176082

Nestled in a quiet residential area surrounded by mature trees, this beautiful single-storey villa combines contemporary design with comfort. Ideally located just 2.5 km from Vilamoura's golden...

- Pool
- A/C
- Garden

Telephone: +351 213 471 603
Email: info@portugalhomes.com

Praça da Alegria 1, 3rd Floor, 1250-004 Lisboa, Portugal Licence AMI - 14414 | APEMIP 5940



Property Description

Nestled in a quiet residential area surrounded by mature trees, this beautiful single-storey villa combines contemporary design with comfort. Ideally located just 2.5 km from Vilamoura's golden beaches and vibrant Marina, it offers the perfect balance between tranquillity and convenience. Refurbished in 2020 on a generous 2,182m² plot, the villa boasts 356 m² of thoughtfully laid-out living space, designed to the highest standards.

Stepping into the welcoming entrance hall, you discover a bright and spacious lounge with a suspended fireplace, a separate dining room perfect for entertaining, and a modern, fully fitted and equipped kitchen. The home also includes a dedicated laundry room and a charming summer kitchen with a BBQ area - ideal for al fresco dining.

The villa features four bedrooms, three of which have en-suite bathrooms, plus an additional full bathroom. Large terraces with excellent sun exposure invite you to relax and soak up the Algarve sunshine.

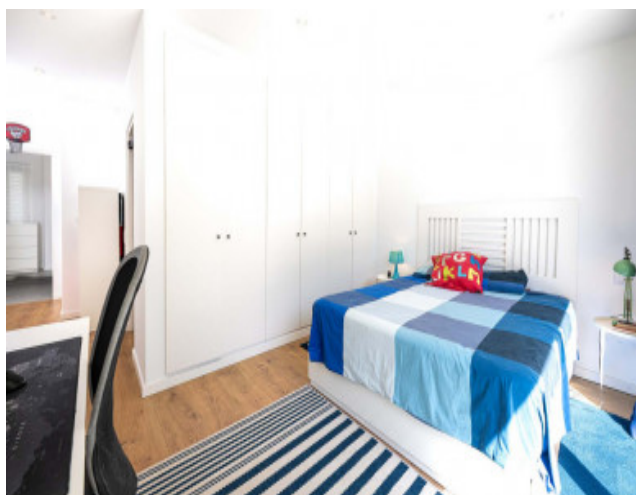
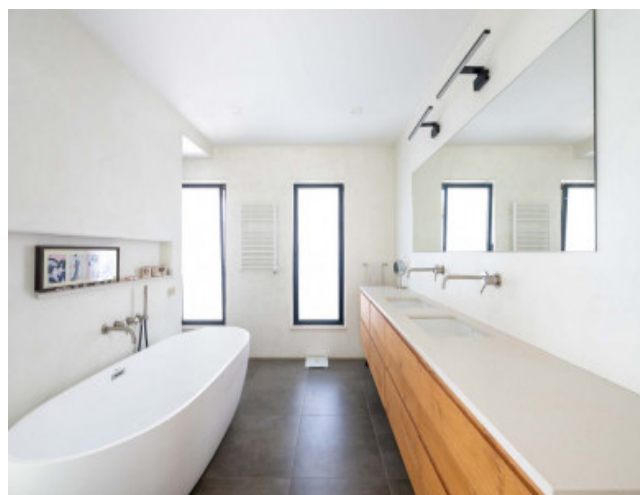
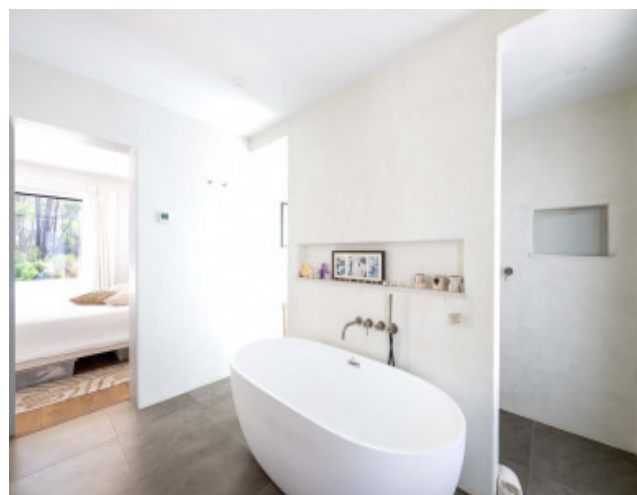
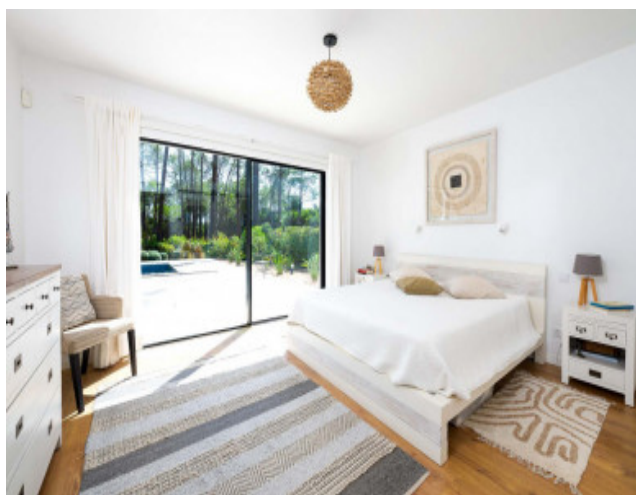
Equipped with double glazing, solar panels, underfloor heating, and air conditioning, this home ensures year-round comfort and energy efficiency.

Outside, you'll find a beautifully landscaped private garden with a swimming pool surrounded by lawn, and multiple leisure areas designed for enjoying the wonderful climate, including a rooftop terrace. There is parking for two cars under a pergola, with additional exterior parking.

Just 500 m from one of the best golf courses in the region, this property is perfect for a permanent residence or an idyllic holiday retreat, capturing the very best of Vilamoura living.

Early viewing highly recommended.

Gallery



Telephone: +351 213 471 603
Email: info@portugalhomes.com

Praça da Alegria 1, 3rd Floor, 1250-004 Lisboa, Portugal Licence AMI - 14414 | APEMIP 5940

Additional Details

Attributes

Status Available	Gross Area 356sq m	Year Built 1984
----------------------------	------------------------------	---------------------------

Property Features

Pool	A/C	Garden
------	-----	--------

Site Floorplan