

## Modern Smart Living T1 & T2 Apartments In Santa Luzia

€370,000 -  
€555,000

Ref: PP175647

This project is a residential development just 2 kilometres from Tavira, Algarve. A region known for its picturesque coastal charm. This project offers a mix of T1 (one-bedroom) and...





## Property Description

This project is a residential development just 2 kilometres from Tavira, Algarve. A region known for its picturesque coastal charm. This project offers a mix of T1 (one-bedroom) and T2 (two-bedroom) apartments, catering to different lifestyle needs. The development emphasises modern living, incorporating smart architectural solutions, high-quality materials, and functional designs. It also includes underground parking, ensuring convenience and security for residents.

The development is spread across three floors:

The Ground Floor (Piso 0) features garden-level residences with private outdoor areas.

The First Floor (Piso 1) offers well-balanced apartments with spacious balconies.

The Second Floor (Piso 2) consists of sky residences with expansive terraces, offering panoramic views of the surroundings.

### Apartment Categories

Each apartment falls under one of three distinct categories, each offering unique features tailored to different preferences:

#### Garden Residences (Piso 0 / Ground Floor)

These apartments offer private gardens, terraces, or balconies, making them ideal for those who enjoy outdoor living. The units are designed to provide a seamless connection between indoor and outdoor spaces, enhancing natural light and ventilation. With direct access to green spaces, these residences are perfect for nature lovers and families who appreciate a tranquil environment.

#### Sunny Residences (Piso 1 / First Floor)

Apartments on the first floor are designed to maximise comfort and functionality, featuring spacious balconies that allow for outdoor relaxation while maintaining privacy. These units offer a balanced blend of space, accessibility, and elevated views. They cater to individuals or families seeking a mix of open-air living and modern indoor comfort.

#### Sky Residences (Piso 2 / Second Floor)

Positioned on the top floor, these residences boast large terraces with extended outdoor areas, providing breathtaking views of the surrounding landscape. These units are ideal for those who prioritise privacy and an open, airy living experience. The terraces serve as an extension of the indoor space, perfect for entertaining guests or enjoying the serene Algarve sunsets.

### Customisation Options:

Comfort Option: Focused on creating a cosy and relaxing environment.

Family & Friends Option: Designed for hosting guests with spacious, flexible layouts.

### Key Features:

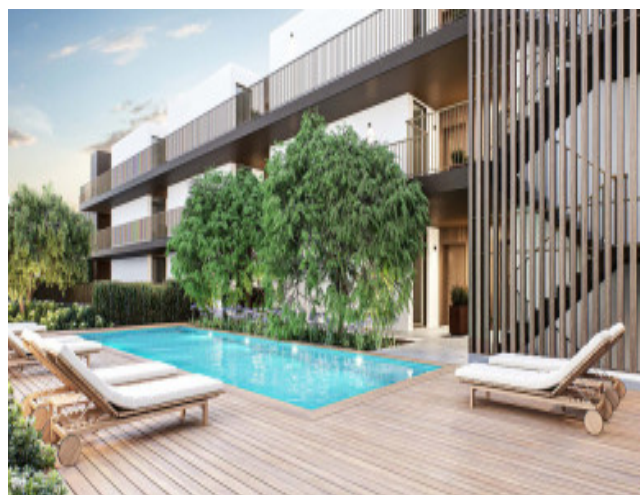
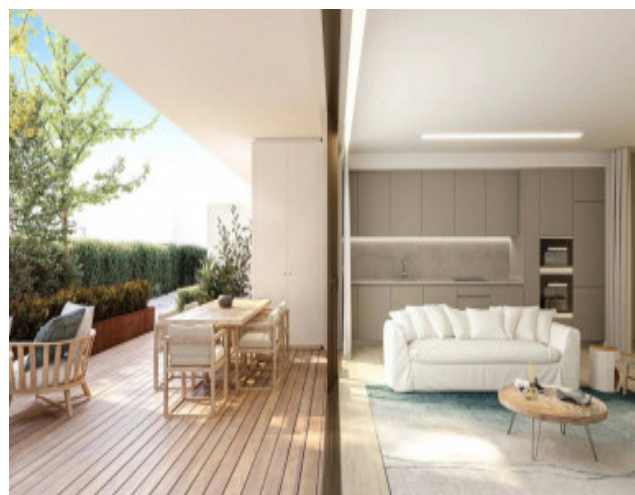
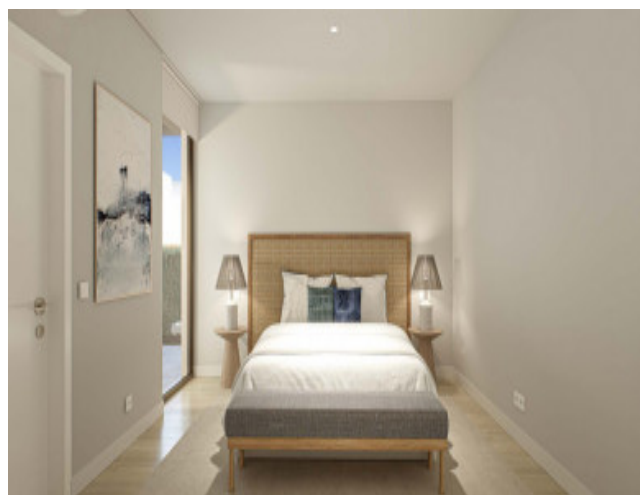
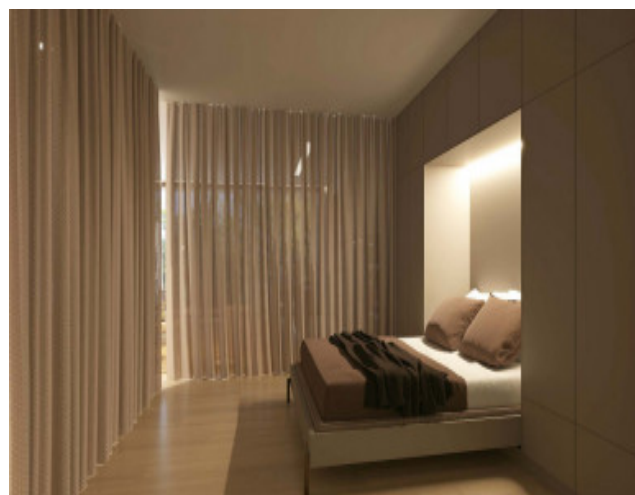
Each apartment includes an outdoor space (private terrace or balcony).

Parking spaces provided (1 or 2 depending on the unit).

Total Private Areas range from approximately 97 m<sup>2</sup> to 150 m<sup>2</sup>.



## Gallery



Telephone: +351 213 471 603  
Email: [info@portugalhomes.com](mailto:info@portugalhomes.com)

Praça da Alegria 1, 3rd Floor, 1250-004 Lisboa, Portugal Licence AMI - 14414 | APEMIP 5940

# Additional Details

## New Development Features



Development Units

| Fraction | Bedrooms | Floor Size | Price    |
|----------|----------|------------|----------|
| Y        | 1        |            | €370,000 |
| Z        | 1        |            | €370,000 |
| X        | 1        |            | €370,000 |
| V        | 1        |            | €370,000 |
| P        | 1        |            | €395,000 |
| M        | 1        |            | €395,000 |
| N        | 1        |            | €395,000 |
| S        | 1        |            | €395,000 |
| O        | 1        |            | €395,000 |
| L        | 1        |            | €395,000 |
| E        | 1        |            | €425,000 |
| D        | 1        |            | €425,000 |
| I        | 1        |            | €425,000 |
| F        | 1        |            | €425,000 |
| K        | 2        |            | €460,000 |
| T        | 2        |            | €460,000 |
| R        | 2        |            | €545,000 |
| H        | 2        |            | €545,000 |
| AB       | 2        |            | €545,000 |

# Site Floorplan