

# €250,000

Ref: PW438

50 sqm

Two bedroom apartment for a total renovation.

- Heating
- Central heating

Telephone: +351 213 471 603

Email: [info@portugalhomes.com](mailto:info@portugalhomes.com)

Praça da Alegria 1, 3rd Floor, 1250-004 Lisboa, Portugal Licence AMI - 14414 | APEMIP 5940



## Property Description

Graça is a former parish in the municipality of Lisbon, Portugal. At the administrative reorganization of Lisbon on 2012 it became part of the parish of São Vicente.

In the highest of the seven hills lies the historical district of Graça. Here you can feel the genuine atmosphere of Lisbon and its people, who live in this neighborhood in perfect harmony with the residents who have recently joined, including many foreigners who were captivated by this prestigious area of Lisbon.

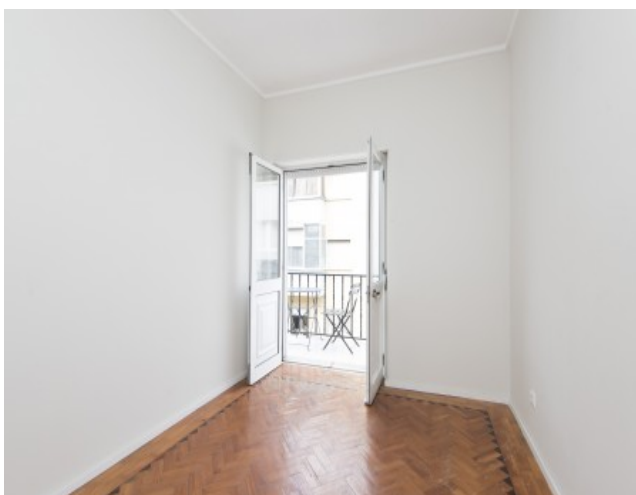
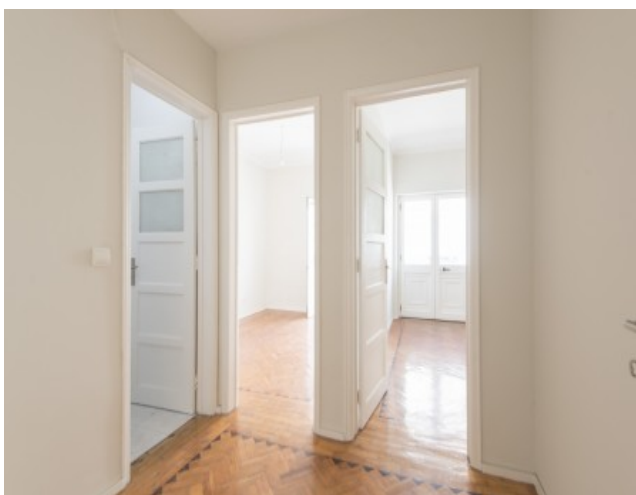
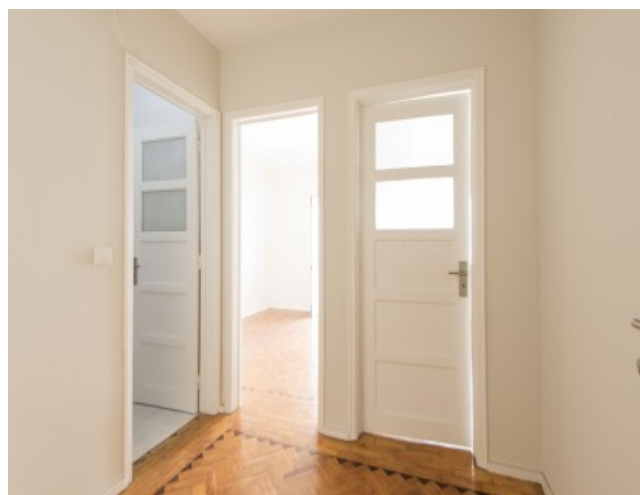
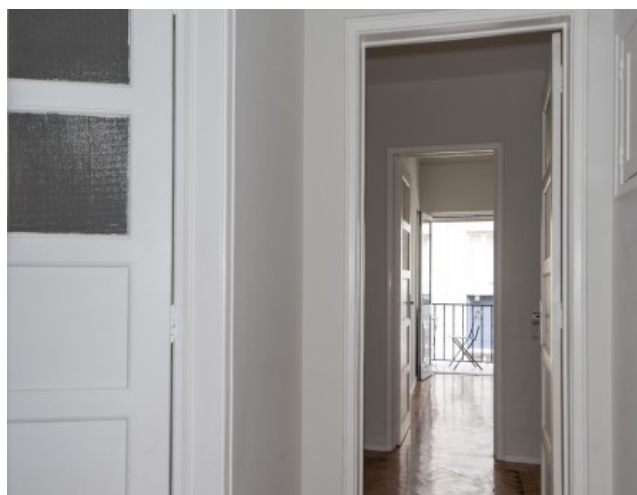
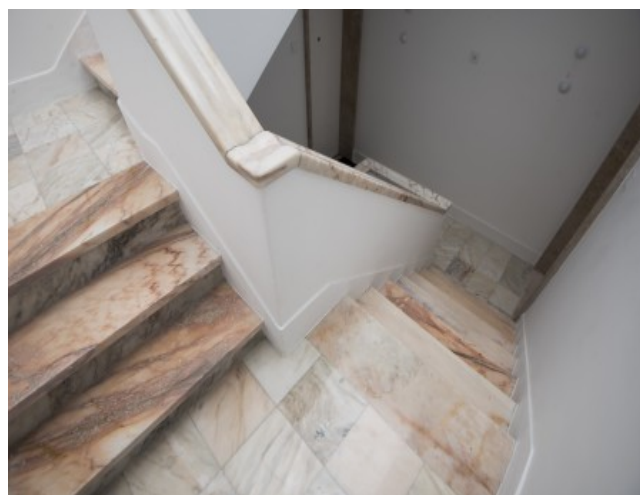
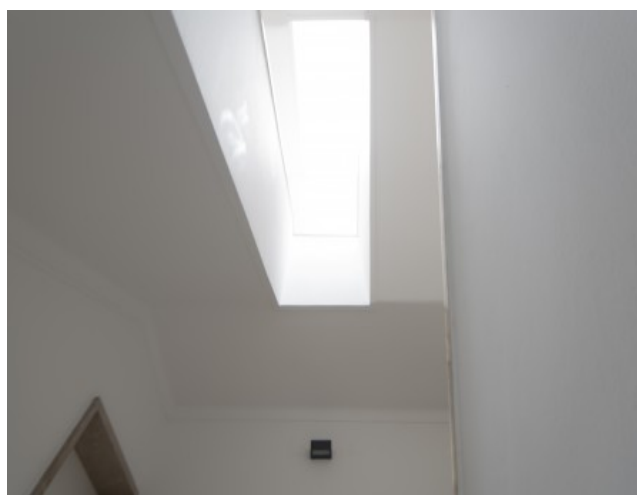
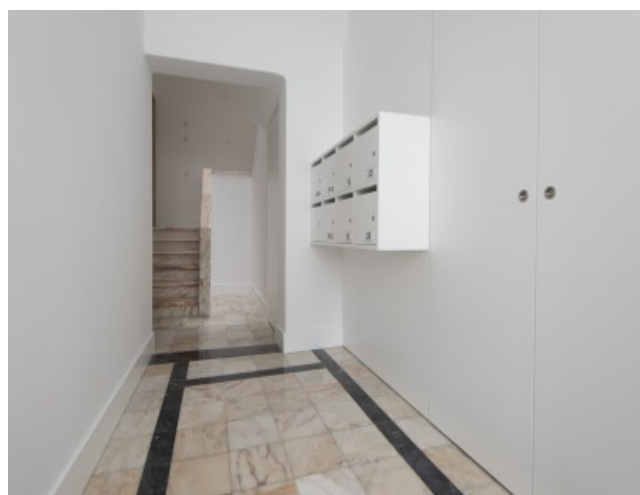
The neighborhood of Graça is located next to the iconic Castelo de São Jorge, know for the superb view it provides to its visitors. Also in this neighborhood are two well-known viewpoints, the Miradouro da Graça, and Miradouro da Senhora do Monte.

Today, Graça is a very rich and diverse neighborhood, with wide streets, viewpoints, and buildings ranging from the simplest of residences to the most imposing palace. It is an area that appeals not only to locals but also foreigners, for its soul, historical value and location.

Two bedroom apartment for a total refurbishment. Location is very quiet but very central. Public transport at the door.

Book your visit today.

## Gallery



Telephone: +351 213 471 603  
Email: [info@portugalhomes.com](mailto:info@portugalhomes.com)

Praça da Alegria 1, 3rd Floor, 1250-004 Lisboa, Portugal Licence AMI - 14414 | APEMIP 5940

## Additional Details

### Attributes

<b>Status</b> Sold	<b>Net Area</b> 50sq m	<b>Gross Area</b> 50sq m
<b>Floors</b> 1	<b>Condition</b> To be Refurbished	<b>Year Built</b> 1961

### Property Features

Heating	Central heating
---------	-----------------

# Site Floorplan