



€2,950,000

Ref: PP176016

This contemporary villa, currently under construction in Vilamoura, showcases sleek modern architecture with four spacious bedrooms and a private swimming pool, all overlooking the stunning golf course....

- Pool
- A/C
- Garden

Telephone: +351 213 471 603
Email: info@portugalhomes.com

Praça da Alegria 1, 3rd Floor, 1250-004 Lisboa, Portugal Licence AMI - 14414 | APEMIP 5940



Property Description

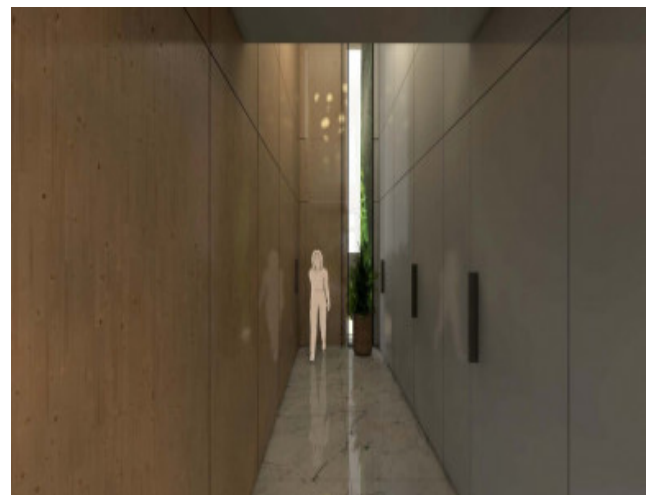
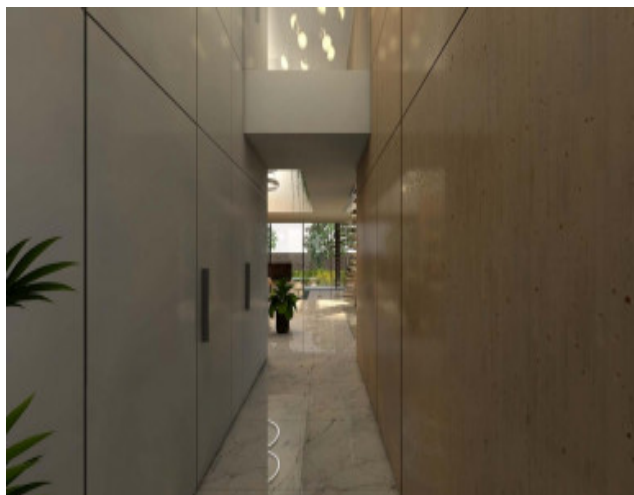
This contemporary villa, currently under construction in Vilamoura, showcases sleek modern architecture with four spacious bedrooms and a private swimming pool, all overlooking the stunning golf course.

The open-plan layout seamlessly connects the living and dining areas with the kitchen, extending onto a covered terrace, ideal for enjoying the Algarve's mild climate.

Two en-suite bedrooms are located on the ground floor, while the first floor offers two additional suites, each with its own private balcony, ensuring both comfort and privacy.

The basement features a large garage and a versatile multipurpose space that can be adapted to suit your lifestyle.

Set in a prestigious residential area, just 3 km from Vilamoura's vibrant Marina, this property also offers the opportunity to customise the finishes, depending on the stage of construction, making it truly your own.



Additional Details

Attributes

Status Available	Gross Area 429sq m	Year Built 2025
----------------------------	------------------------------	---------------------------

Property Features

Pool	A/C	Garden
------	-----	--------

Site Floorplan