

€260,000

Ref: PP175992

Overview: Parish of Santo António (Funchal) Civil Parish Details Santo António ("Saint Anthony") is a civil parish in the northwest of Funchal, Madeira, approximately 3 km from...

Telephone: +351 213 471 603
Email: info@portugalhomes.com

Praça da Alegria 1, 3rd Floor, 1250-004 Lisboa, Portugal Licence AMI - 14414 | APEMIP 5940



Property Description

Overview: Parish of Santo António (Funchal)

Civil Parish Details

Santo António ("Saint Anthony") is a civil parish in the northwest of Funchal, Madeira, approximately 3 km from Funchal's centre. Wikipedia.

It is the most populous parish in the archipelago, spanning around 22.17 km² with a population of approximately 25,940 as of the 2021 census WikipédiaWikipedia.

Its territory extends into the mountainous interior of Madeira and includes the scenic Pico do Areeiro (1,818 m) Wikipédia.

Historical Context

The parish traces its roots to a small hermitage dedicated to St. Anthony, existing from the mid-16th century. In 1557, it was established as a curacy, and by around 1566 it was elevated to parish status WikipediaJunta de Freguesia de Santo António.

The original chapel became insufficient over time, leading to the construction of a larger church. Construction of the current Igreja de Santo António began in 1783 and the exterior was completed in 1789, though interior works continued into the 19th century funchal.ptJunta de Freguesia de Santo AntónioWikipedia.

The church features twin bell towers, completed in 1883 with funding secured in 1880 by Cónego Feliciano Teixeira Junta de Freguesia de Santo AntónioWikipedia.

The Igreja de Santo António

Built in late 18th-century Rococo style under the direction of royal master builder João António Vivêncio, replacing an older chapel destroyed by the 1748 earthquake Visit Madeira+1funchal.pt.

Its interior is distinguished by elaborate Rococo woodcarving by Estêvão Teixeira de Nóbrega and includes six richly ornamented altars, inherited from the earlier chapel Visit MadeiraWikipedia.

In the 1920s, significant restorations were made: one of the bell towers received a large working clock Visit Madeira+1Visit Funchal.

The church is active during traditional festivities; each June, during its romagens (pilgrimages), the churchyard hosts displays of local Madeiran products, fruit, flowers, and sweets that are auctioned in festive bazaars Visit Madeira+1.

Parish Infrastructure and Highlights

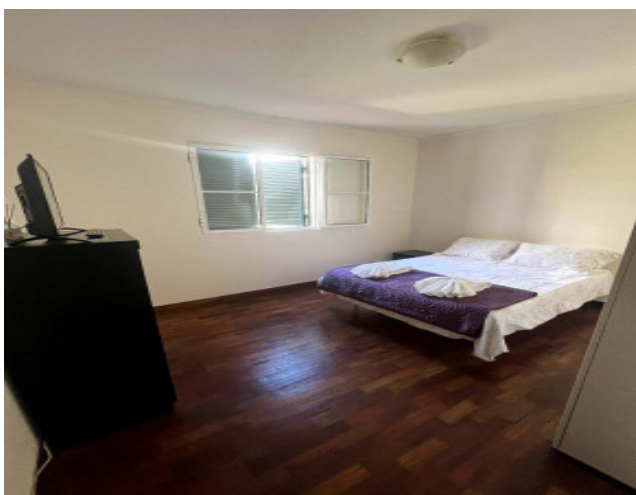
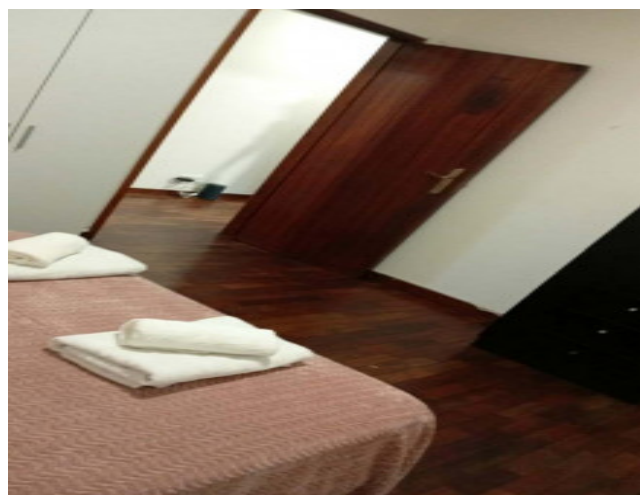
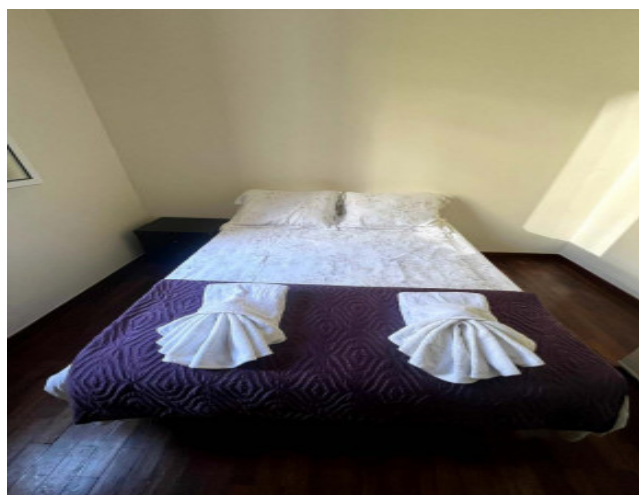
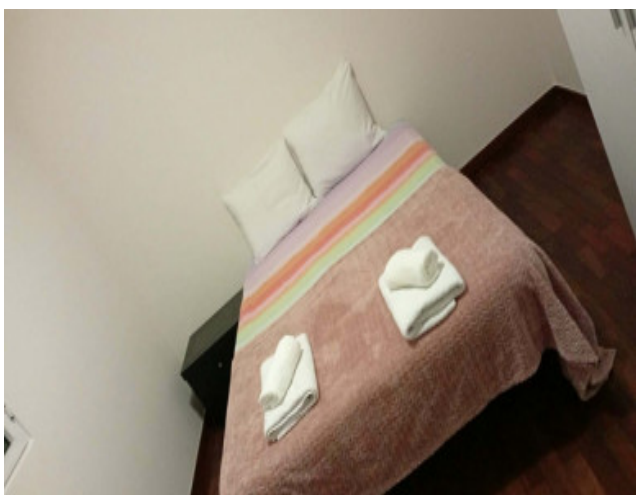
Alongside the church, Santo António hosts numerous chapels (e.g., Santo Amaro, São Filipe, Nossa Senhora do Pópulo), cultural centres, and community institutions [namadeira.pt](#).

Notable landmarks include the Pico dos Barcelos viewpoint, offering stunning panoramic views of Funchal [Wikipedianamadeira.pt](#).

The Regional Archive of Madeira is based in the parish and is responsible for managing and preserving public and private archives in the region [Wikipedia](#).

The parish also includes the Mosteiro de Santo António, a Franciscan monastery of the Poor Clares, founded in the late 1960s and canonically established in 1975

Gallery



Telephone: +351 213 471 603

Email: info@portugalhomes.com

Praça da Alegria 1, 3rd Floor, 1250-004 Lisboa, Portugal Licence AMI - 14414 | APEMIP 5940

Additional Details

Attributes

Status	Gross Area	Year Built
Available	73sq m	2001

Site Floorplan