



€1,350,000

Ref: PP175971

THE CREEK VILAMOURA: WHERE ARCHITECTURAL EXCELLENCE MEETS GOLDEN TRIANGLE PRESTIGE
EXCLUSIVE RESIDENCE IN VILAMOURA'S MOST COVETED ADDRESS Nestled within the prestigious golden triangle of Vilamoura,...

- Pool
- A/C
- Garden

Telephone: +351 213 471 603
Email: info@portugalhomes.com

Praça da Alegria 1, 3rd Floor, 1250-004 Lisboa, Portugal Licence AMI - 14414 | APEMIP 5940



Property Description

THE CREEK VILAMOURA: WHERE ARCHITECTURAL EXCELLENCE MEETS GOLDEN TRIANGLE PRESTIGE

EXCLUSIVE RESIDENCE IN VILAMOURA'S MOST COVETED ADDRESS

Nestled within the prestigious golden triangle of Vilamoura, The Creek represents the pinnacle of refined Algarve living. This exceptional 2-bedroom apartment, spanning a meticulously crafted 128 m², stands as a testament to uncompromising luxury in one of Europe's most sought-after destinations. Designed by celebrated architect Vasco Vieira of Arqui+ renowned for his bold, contemporary visions across Vale do Lobo, Quinta do Lago, and international locations from Miami to Dubai, this residence offers an unparalleled opportunity for the discerning buyer.

ARTISTRY IN DESIGN AND CRAFTSMANSHIP

Every element within this residence speaks to extraordinary attention to detail. The open-concept living spaces feature floor-to-ceiling minimalist windows that flood the interior with natural light while framing mesmerising views of the surrounding water canals and golf fairways. Premium Italian marble flooring extends throughout, complemented by bespoke cabinetry crafted from the finest Portuguese walnut.

The gourmet kitchen showcases Miele's Signature Collection appliances, seamlessly integrated within custom lacquered cabinetry, and crowned with premium Dekton countertops that combine elegance with practicality. The sophisticated neutral palette creates a canvas for personal expression while maintaining the development's commitment to timeless elegance.

Both bedrooms feature en-suite bathrooms appointed with Hansgrohe fixtures and handcrafted tiles, with the master suite opening to a private terrace that captures breathtaking sunset views over the fairways. The expansive main terrace, accessible from the living area, creates a seamless indoor-outdoor living experience perfect for entertaining or private reflection.

TECHNOLOGICAL SOPHISTICATION AND SUSTAINABILITY

This A+ energy-rated residence incorporates cutting-edge technology and sustainable features, including:

Comprehensive KNX home automation system controlling lighting, climate, and security Underfloor heating throughout for optimal comfort Advanced VRV climate control for year-round temperature perfection Solar thermal panels contributing to the development's energy efficiency Acoustic insulation engineering that ensures tranquility despite proximity to vibrant Vilamoura Smart home integration allowing remote management of all residence systems

THE CREEK: A VISIONARY COMMUNITY

Occupying a mere 2,200 m² of building footprint within a luxurious 22,000 m² plot, The Creek represents a rare commitment to space and privacy in modern luxury development. The expansive grounds feature:

Expertly landscaped gardens by Jardim Vista, creators of Quinta do Lago's most iconic green spaces Infinity-edge swimming pool overlooking the water canals, Professional padel tennis court, Pitch & putt golf practice area with professional-grade bunkers Traditional pétanque field for leisurely recreation, State-of-the-art indoor and outdoor fitness facilities, Wellness sanctuary featuring sauna and Turkish bath, 24-hour security and concierge services

This intimate community of just 45 residences ensures privacy and exclusivity while fostering a sense of belonging among like-minded individuals who value refinement, quality, and the sophisticated Vilamoura lifestyle.

PRIVILEGED LOCATION AND LIFESTYLE

The Creek's strategic positioning places you at the nexus of Vilamoura's most coveted attractions:

2 km from the world-renowned Vilamoura Marina with its cosmopolitan dining and nightlife, 2.5 km from the pristine sands of Falésia Beach, 1.4 km from three championship golf courses, Seamless access to cycling and walking paths that connect to Vilamoura's natural park, Minutes from premium international schools, medical facilities, and boutique shopping

The property's southwest orientation captures Portugal's legendary golden sunsets, while the canal-side setting creates a microclimate of cooling breezes during summer months - a perfect harmony of natural elements and architectural vision.

A LIMITED OPPORTUNITY

At €1,350,000, this residence represents remarkable value in a market where comparable quality commands significantly higher premiums. With completion scheduled for September 2025 and only a handful of units remaining, this represents your final opportunity to secure pre-construction pricing in Vilamoura's most exclusive new development.

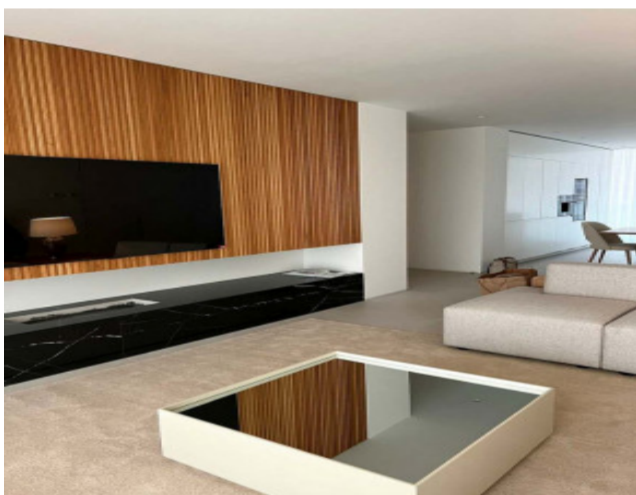
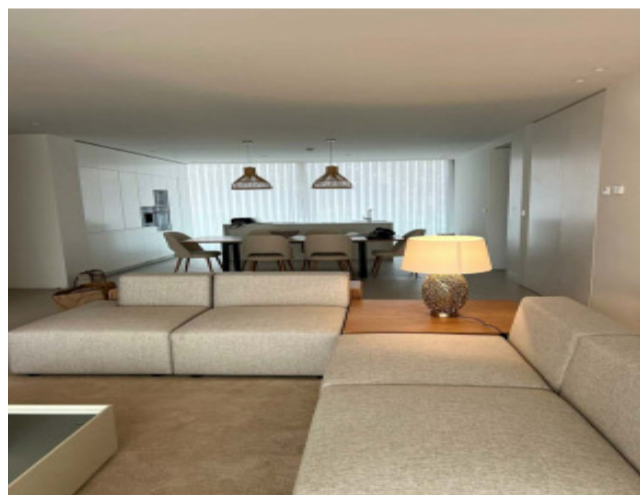
This isn't merely about acquiring property; it's about claiming your place in a legacy development that will stand as a landmark of Portuguese coastal luxury for generations. The tourist classification ensures exceptional rental potential, making this not just a lifestyle choice but a sound investment in Portugal's thriving luxury market.

Time is of the essence. Once the development opens its doors to its inaugural residents, opportunities to join this extraordinary community will become increasingly rare and invariably more costly.

Secure your legacy in Vilamoura's most exclusive address today.

Contact us now to arrange your private viewing and become one of The Creek's founding residents. A life of architectural excellence and golden triangle prestige awaits; will you answer its call?

Gallery



Telephone: +351 213 471 603
Email: info@portugalhomes.com

Praça da Alegria 1, 3rd Floor, 1250-004 Lisboa, Portugal Licence AMI - 14414 | APEMIP 5940

Additional Details

Attributes

Status Available	Gross Area 128sq m	Year Built 2025
----------------------------	------------------------------	---------------------------

Property Features

Pool	A/C	Garden
------	-----	--------

Site Floorplan