

€987,500

Ref: PP175897

Experience the pinnacle of seaside living with this brand-new luxury apartment, located right on the beachfront in the prestigious Dom Pedro Residences, Vilamoura. With exceptional sun exposure and...

• Pool

• A/C

• Garden

Telephone: +351 213 471 603
Email: info@portugalhomes.com

Praça da Alegria 1, 3rd Floor, 1250-004 Lisboa, Portugal Licence AMI - 14414 | APEMIP 5940



Property Description

Experience the pinnacle of seaside living with this brand-new luxury apartment, located right on the beachfront in the prestigious Dom Pedro Residences, Vilamoura. With exceptional sun exposure and arguably one of the most stunning sea views in the Algarve, this property offers an unbeatable location and lifestyle.

Wake up every morning to breathtaking ocean views; whether you're in the bedroom, living room, or kitchen, the beach and the sea will be your constant companions. Step directly from the condominium onto the sand without the need for a car - perfect for morning walks or taking your dog out for a stroll.

Modern Elegance Meets Comfort

This apartment features a spacious open-plan living area and a fully equipped modern kitchen that opens onto a generous balcony with panoramic sea views. The two large bedrooms include built-in wardrobes and a walk-in closet in the master suite, both offering balcony access and sea views.

Finished to a high standard with a sleek modern design, the apartment includes air conditioning throughout and is sold fully furnished and decorated - ready for you to move in or start generating income.

Exclusive Amenities

Underground parking for one vehicle

Private storage room

Beautiful landscaped gardens

Outdoor swimming pool

Leisure areas and direct beach access

24/7 reception and concierge service

Optional babysitting service

Access to the indoor pool and spa at the adjacent Dom Pedro Vilamoura Hotel

A Smart Investment

This is a rare opportunity for a secure investment with an estimated 8% return if used for holiday rentals.

Prime Location

Just a short walk from the award-winning Vilamoura Marina, with 825 berths for yachts up to 60 metres. Golf enthusiasts

will be delighted with five world-class golf courses nearby, ranked among the best in Continental Europe. The area also offers elite equestrian facilities, as well as a wide range of aquatic and land-based sports options.

Don't miss this unique opportunity to own a luxurious beachfront apartment in one of Portugal's most sought-after coastal destinations.

Energy Rating: B

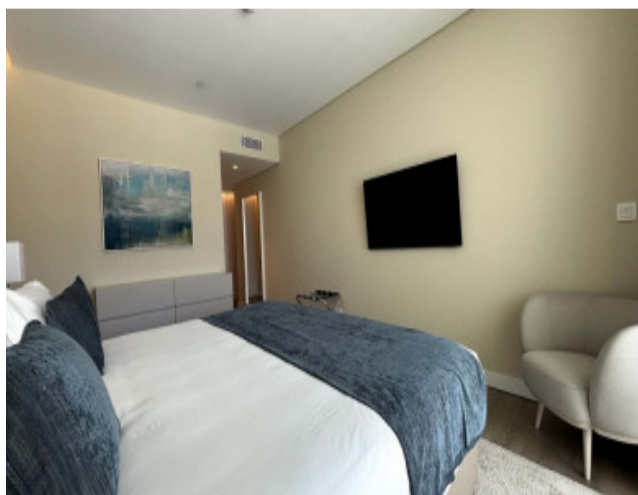
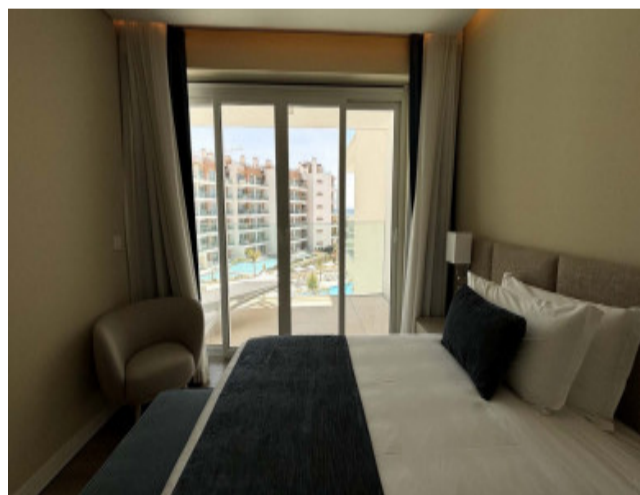
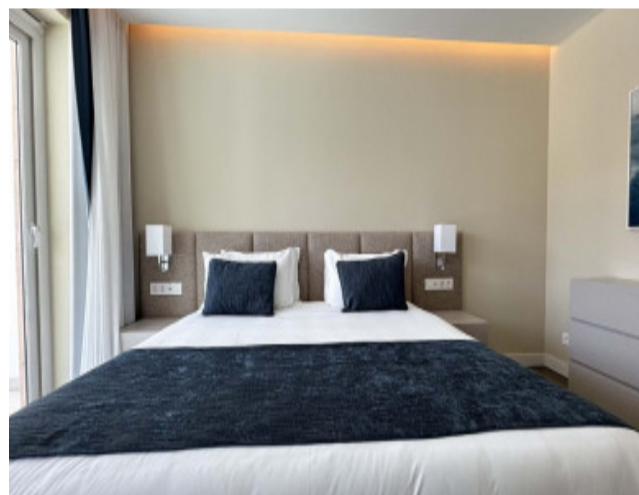
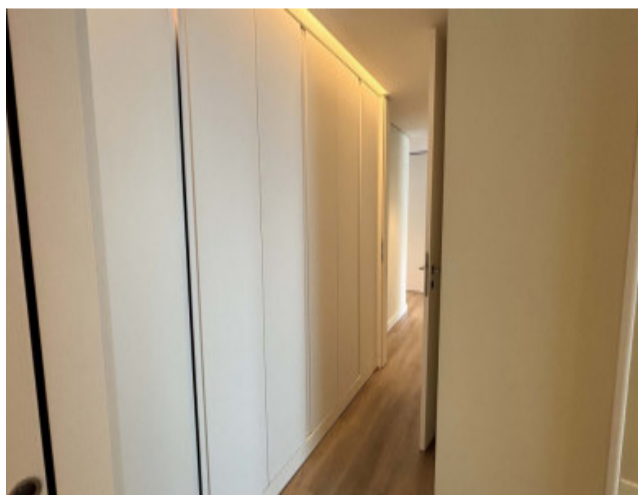
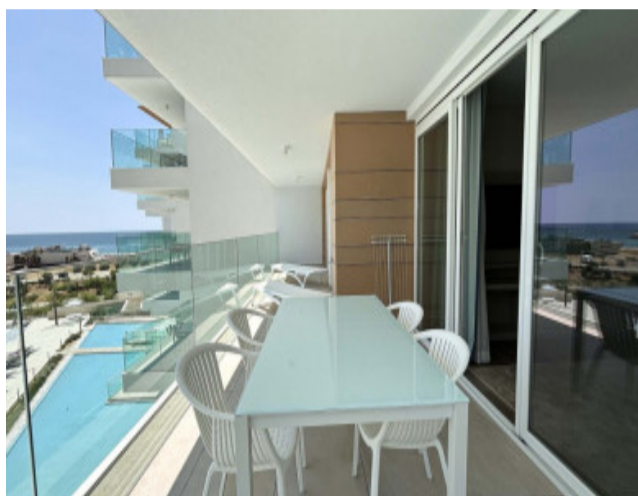
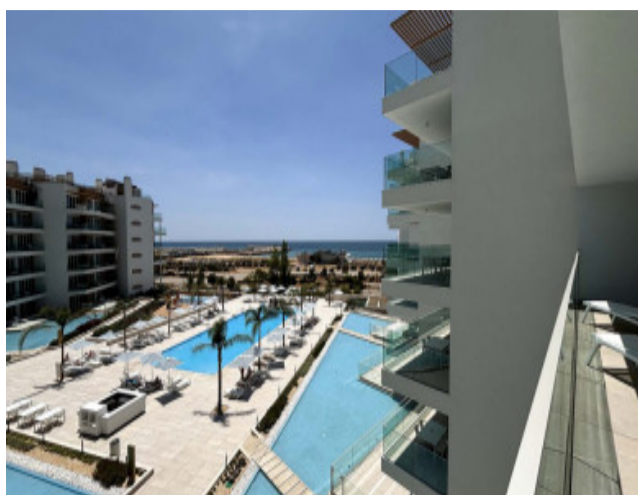
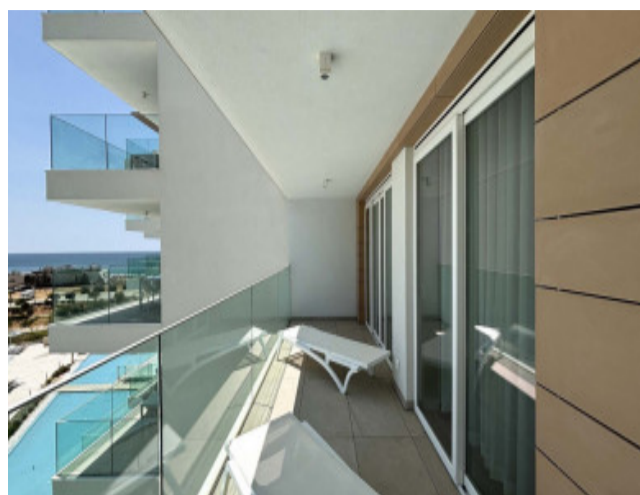
Telephone: +351 213 471 603

Email: info@portugalhomes.com

Praça da Alegria 1, 3rd Floor, 1250-004 Lisboa, Portugal Licence AMI - 14414 | APEMIP 5940



Gallery



Telephone: +351 213 471 603

Email: info@portugalhomes.com

Praça da Alegria 1, 3rd Floor, 1250-004 Lisboa, Portugal Licence AMI - 14414 | APEMIP 5940

Additional Details

Attributes

Status Available	Gross Area 104sq m	Year Built 2024
----------------------------	------------------------------	---------------------------

Property Features

Pool	A/C	Garden
------	-----	--------

Site Floorplan

Telephone: +351 213 471 603

Email: info@portugalhomes.com

Praça da Alegria 1, 3rd Floor, 1250-004 Lisboa, Portugal Licence AMI - 14414 | APEMIP 5940

