



€470,000

Ref: PP175786

This stunning ground floor, two-bedroom apartment offers a spacious and modern living experience, designed for both comfort and style. The open-plan living area seamlessly connects the contemporary kitchen,...

- Pool

- A/C

Telephone: +351 213 471 603

Email: info@portugalhomes.com

Praça da Alegria 1, 3rd Floor, 1250-004 Lisboa, Portugal Licence AMI - 14414 | APEMIP 5940

 **Portugal
Homes**

Property Description

This stunning ground floor, two-bedroom apartment offers a spacious and modern living experience, designed for both comfort and style. The open-plan living area seamlessly connects the contemporary kitchen, dining, and lounge spaces, creating a functional and inviting atmosphere. The kitchen is equipped with brand-new BOSCH appliances, along with a dedicated coffee station, and access to the Landry Room. A sleek breakfast bar adds to the convenience of the space.

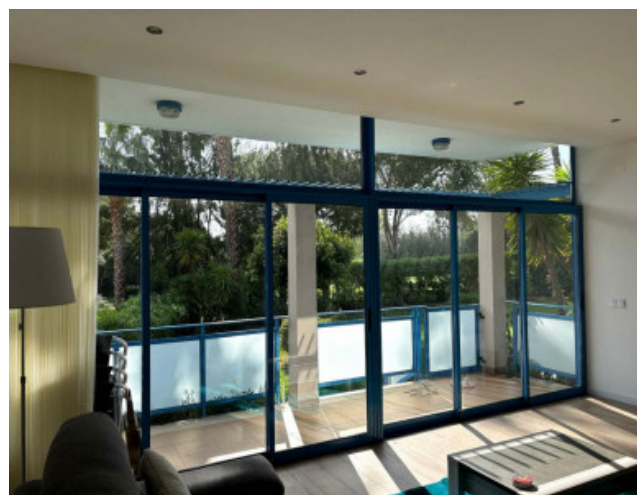
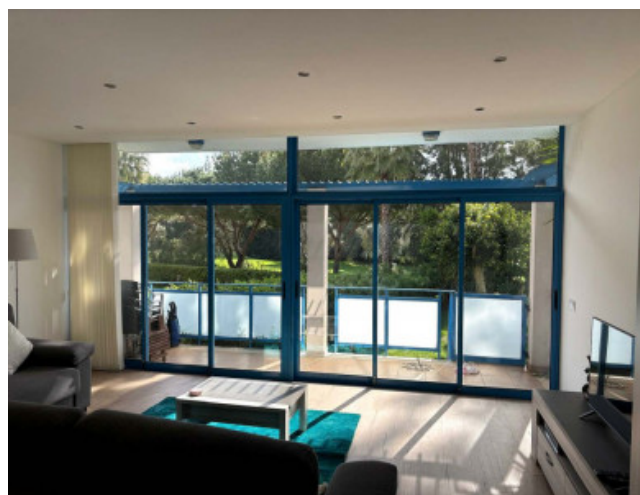
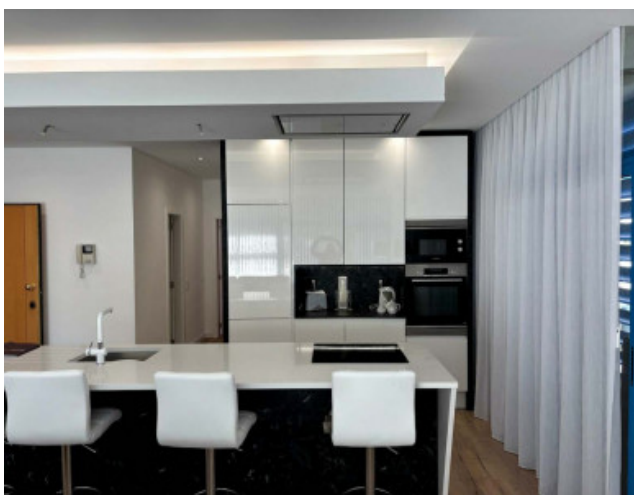
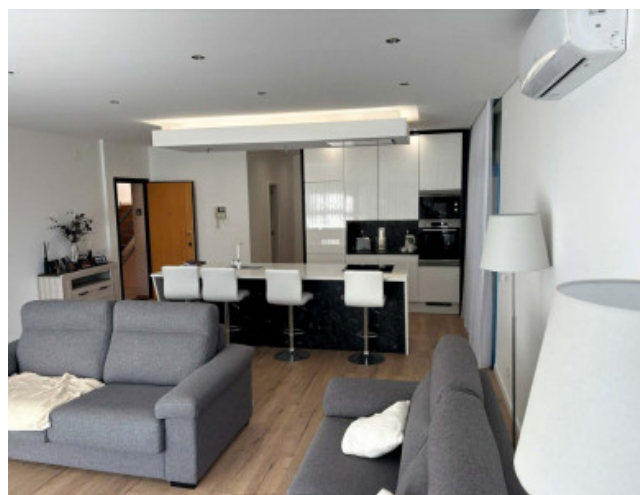
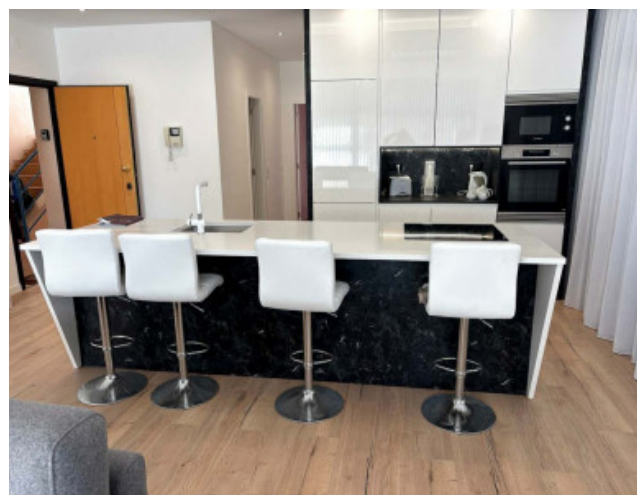
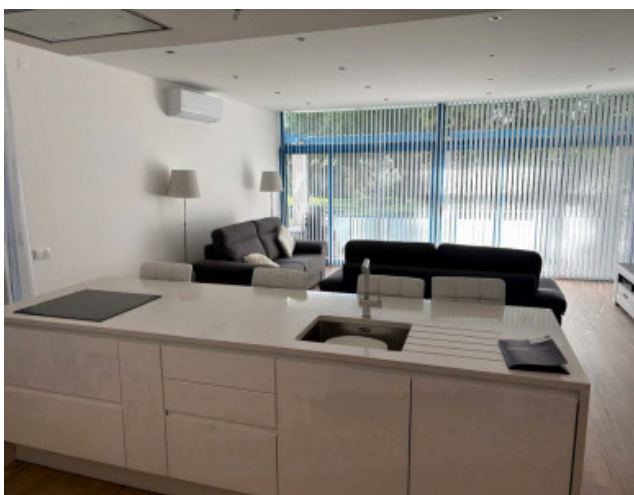
Step out onto one of the three private balconies, with breathtaking views of the fabulous golf course, perfect for enjoying morning coffee or evening sunsets.

Both bedrooms feature their own private balconies, fitted wardrobes, and blackout blinds for maximum comfort. The apartment includes two stylish bathrooms, one with a luxurious free-standing bath and the other with a walk-in shower.

Additional features include air conditioning for both heating and cooling, a video entry phone system, and a secure key safe by the front door. Residents also benefit from underground parking, access by lift and access to a shared swimming pool, making this an exceptional place to call home.

With its prime location and excellent amenities, this apartment offers great rental potential, making it an ideal choice for holidaymakers and golf enthusiasts alike.

Gallery



Telephone: +351 213 471 603
Email: info@portugalhomes.com

Praça da Alegria 1, 3rd Floor, 1250-004 Lisboa, Portugal Licence AMI - 14414 | APEMIP 5940

Additional Details

Attributes

Status	Gross Area	Year Built
Available	85sq m	2005

Property Features

Pool	A/C
------	-----

Site Floorplan