

€450,000

Ref: PP175705

This apartment in Calheta stands out for its unique architecture, combining rocks, garden and wood-coloured elements. The building materials are of excellent quality. In block B, we find the apartment...

- Pool
- A/C
- Garden

Telephone: +351 213 471 603
Email: info@portugalhomes.com

Praça da Alegria 1, 3rd Floor, 1250-004 Lisboa, Portugal Licence AMI - 14414 | APEMIP 5940



Property Description

This apartment in Calheta stands out for its unique architecture, combining rocks, garden and wood-coloured elements. The building materials are of excellent quality.

In block B, we find the apartment with an en-suite bedroom, an open-plan living room with a kitchen, a guest toilet, a laundry room, and two balconies with one part covered and the other uncovered. The unit includes a covered parking space with a socket for charging electric cars.

In addition, the development is situated in a privileged location in the Autonomous Region of Madeira, just 25 minutes from Funchal.

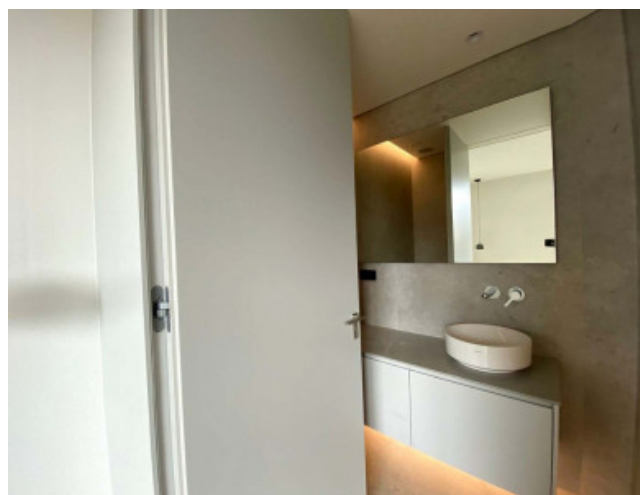
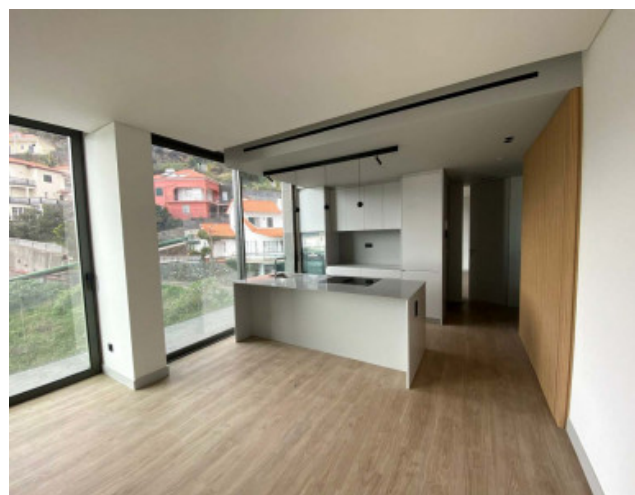
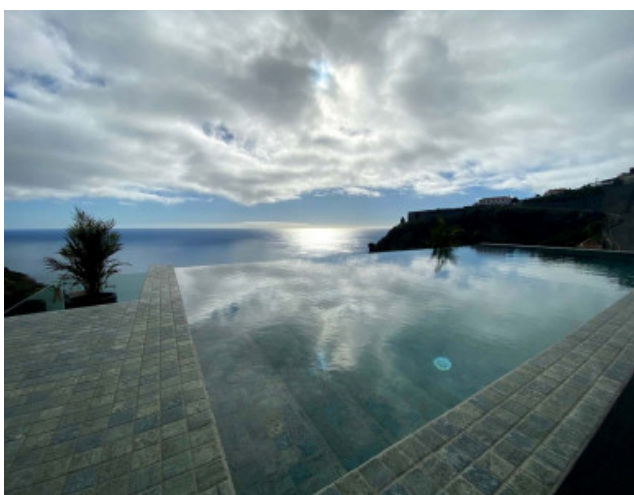
Close to services and attractions such as supermarkets, schools, pharmacies, gyms, golden sandy beaches, etc.

The general characteristics of the development remain modern architecture that harmonises with the natural environment of the green hills. There are a total of 12 apartments, with 4 one-bedroom units and 8 two-bedroom units.

The communal areas include garden areas and a swimming pool facing the Atlantic Ocean, providing leisure time all year round.

With all these features and nearby attractions, the development in Calheta offers a modern, comfortable lifestyle and an attractive opportunity for both locals and tourists wishing to enjoy the wonders that Calheta has to offer.

Gallery



Telephone: +351 213 471 603
Email: info@portugalhomes.com

Praça da Alegria 1, 3rd Floor, 1250-004 Lisboa, Portugal Licence AMI - 14414 | APEMIP 5940

Additional Details

Attributes

Status	Gross Area	Year Built
Available	81sq m	2024

Property Features

Pool	A/C	Garden
------	-----	--------

Site Floorplan