



# €1,500,000

Ref: PP175358

This prime 4,156m<sup>2</sup> plot of land, located in Câmara de Lobos, offers exceptional potential for various types of developments. With its ideal location and advantageous features, this property...

Telephone: +351 213 471 603

Email: [info@portugalhomes.com](mailto:info@portugalhomes.com)

Praça da Alegria 1, 3rd Floor, 1250-004 Lisboa, Portugal Licence AMI - 14414 | APEMIP 5940





## Property Description

This prime 4,156m<sup>2</sup> plot of land, located in Câmara de Lobos, offers exceptional potential for various types of developments. With its ideal location and advantageous features, this property is perfect for investors and developers looking to create a landmark project.

### Key Features:

**Existing Structures:** The land includes four old houses that can be renovated or demolished for redevelopment, offering flexibility for your vision.

**Development Potential:** Suitable for building a hotel, senior living residence, or apartment complex. The land benefits from a high construction index, allowing for significant development opportunities.

### Strategic Location:

Close to the highway entrance and exit, providing excellent accessibility.

Situated near the new public and university hospital currently under construction, making it an attractive spot for healthcare-related or residential projects.

Just a short drive from Funchal, ensuring proximity to city amenities while maintaining a peaceful setting.

**Stunning Sea Views:** The property boasts breathtaking ocean views, adding significant value and appeal to any project.

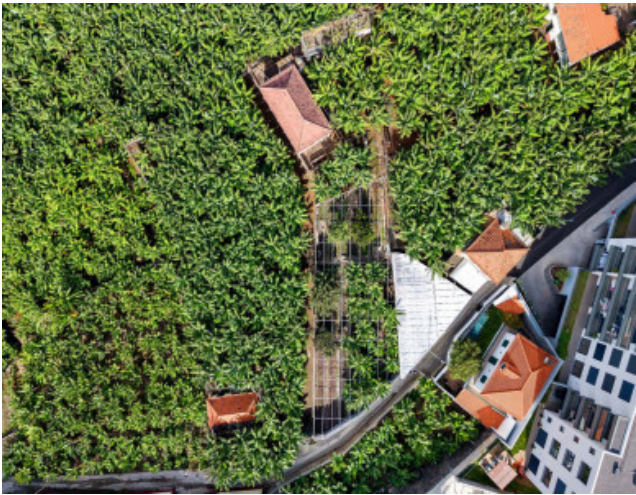
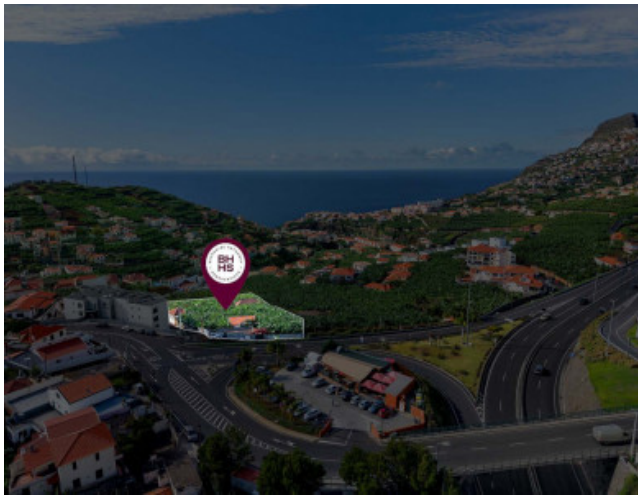
**Thriving Area:** Câmara de Lobos is a growing municipality known for its charming atmosphere and increasing demand for high-quality developments.

This land is an unparalleled opportunity to create a standout project in a highly sought-after location. Don't miss the chance to invest in a property that combines accessibility, scenic beauty, and versatile development potential.

For more details or to schedule a viewing, please contact us.



Gallery





# Additional Details

# Site Floorplan