



€3,550,000

Ref: PP175264

Currently in construction with an estimated completion time for Spring 2025 this is one of the last remaining houses directly facing onto the Dom Pedro Millennium Golf Course featuring 5 en-suite spacious...

- Pool
- A/C
- Garden

Telephone: +351 213 471 603
Email: info@portugalhomes.com

Praça da Alegria 1, 3rd Floor, 1250-004 Lisboa, Portugal Licence AMI - 14414 | APEMIP 5940



Property Description

Currently in construction with an estimated completion time for Spring 2025 this is one of the last remaining houses directly facing onto the Dom Pedro Millennium Golf Course featuring 5 en-suite spacious bedrooms located situated within a delightful cul-de-sac close to the Anantara Hotel

The project, designed by a well-known local architect delivers the maximum potential for such an urbanisation project.

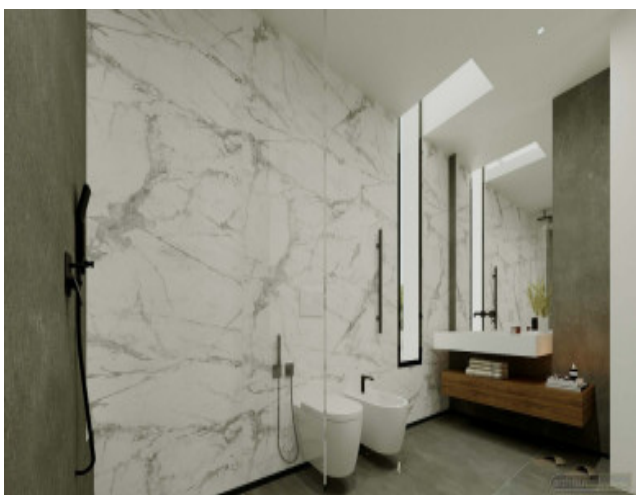
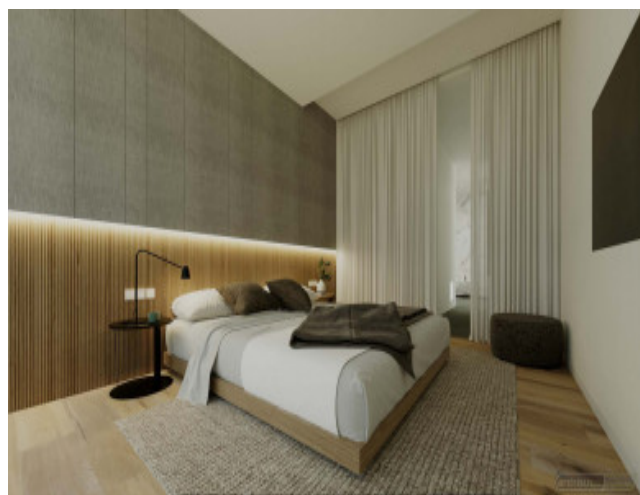
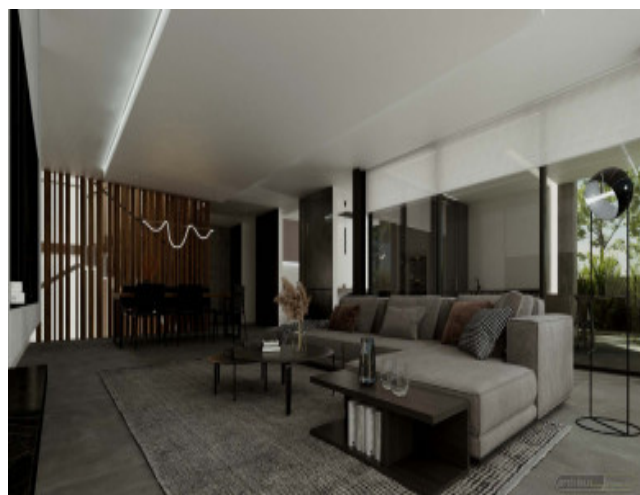
The accomodation has been cleverly divided over 3 levels utilising both the morning and evening Portuguese sunshine thus creating additional living areas and easy access to the rear garden, swimming pool and terrace(s).

There are 5 en-suite spacious bedrooms with the majority south-facing over the golf course views including walk-in or built-in wardrobe space, luxury high furnished bathrooms easily accessed by a central hallway.

This is one of two remaining golf course fronted properties within the area which interests a high-demand for both locals and international tourists due to the desirable location, not to mention the increasing real estate value.

Please schedule your visit with one of our offices or enquire for further information

Gallery



Telephone: +351 213 471 603
Email: info@portugalhomes.com

Praça da Alegria 1, 3rd Floor, 1250-004 Lisboa, Portugal Licence AMI - 14414 | APEMIP 5940

Additional Details

Attributes

Status Available	Gross Area 380sq m	Year Built 2025
----------------------------	------------------------------	---------------------------

Property Features

Pool	A/C	Garden
------	-----	--------

Site Floorplan