

# €2,850,000

Ref: PP175071

Experience unparalleled elegance and sophistication in this exclusive penthouse featuring expansive interiors and a private rooftop with a pool, this property offers breathtaking views of the sea, marina,...

- Pool
- A/C
- Garden

Telephone: +351 213 471 603  
Email: [info@portugalhomes.com](mailto:info@portugalhomes.com)

Praça da Alegria 1, 3rd Floor, 1250-004 Lisboa, Portugal Licence AMI - 14414 | APEMIP 5940



## Property Description

Experience unparalleled elegance and sophistication in this exclusive penthouse featuring expansive interiors and a private rooftop with a pool, this property offers breathtaking views of the sea, marina, mountains, and golf course. Perfect for those who value luxury and distinction. Magnificent 4-bedroom apartment with interior areas of up to 195 m<sup>2</sup> and exterior areas of up to 556 m<sup>2</sup>, with parking in the box for 3 spaces and storage in a development designed to incorporate all the luxuries of life by the sea, exploring the two most valuable elements of the Algarve: light and the sea. With a deep appreciation for the coastal environment, glass facades that harmonise with the elegant interiors and stunning exterior panorama, where the sea takes a central role, shaping both the landscape and the concept of this coastal retreat, the condominium is a timeless project, sophisticated and elegant designed to incorporate all the luxuries of seaside living.

With a wonderful outdoor pool, massage room sauna, gym and a fantastic multifunctional common space.

Characterised by its luminosity, this apartment offers spaces full of natural light, using materials of natural origin that bring residents closer to nature in a development that redefines luxury close to a serene nature reserve with an innovative design that exudes sophistication and elegance.

### Highlights:

#### Exterior and Common Areas:

Facades in natural Travertine stone, minimalist frames with double glazing, and wooden deck balconies.

#### Elevators and Gym:

Elevators from renowned brands, gym with vinyl flooring, plasterboard walls and slatted wooden ceiling.

#### Interiors:

Oak wood flooring, soundproof walls, LED recessed lighting and MDF cabinets.

#### Sanitary facilities:

NEOLITH ceramic tiles, wall-hung toilets and heated floors.

#### Kitchens:

Cabinets in waterproof MDF, SIEMENS appliances, and counters in ceramic type NEOLITH or equivalent.

#### Air Conditioning and Security:

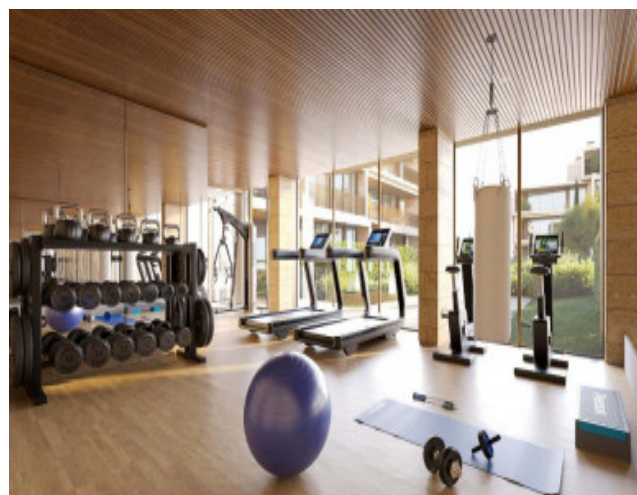
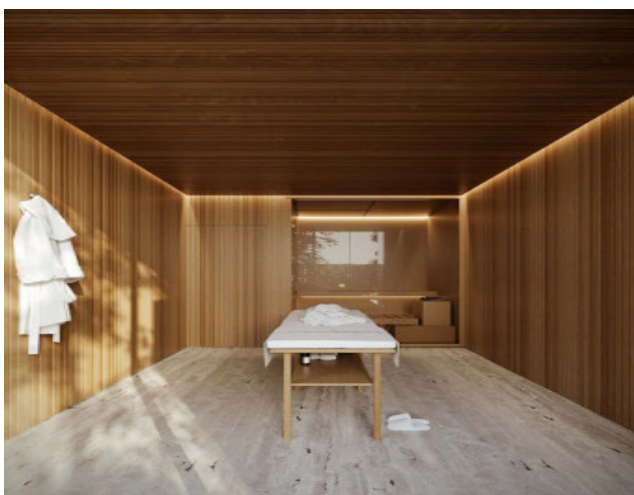
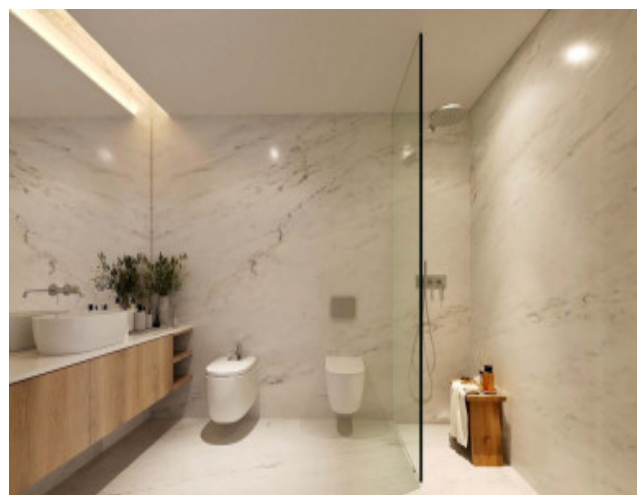
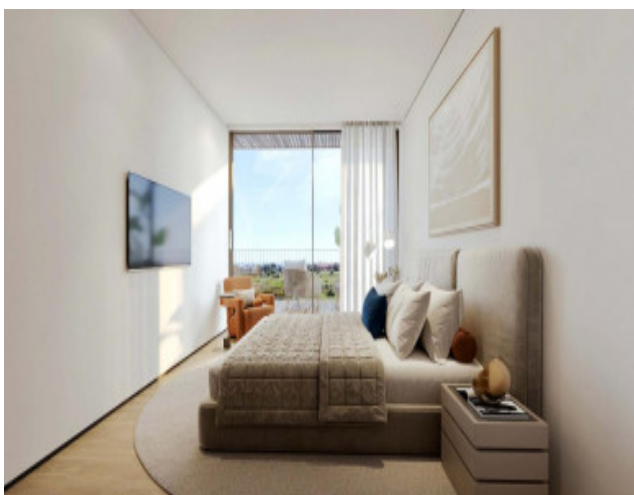
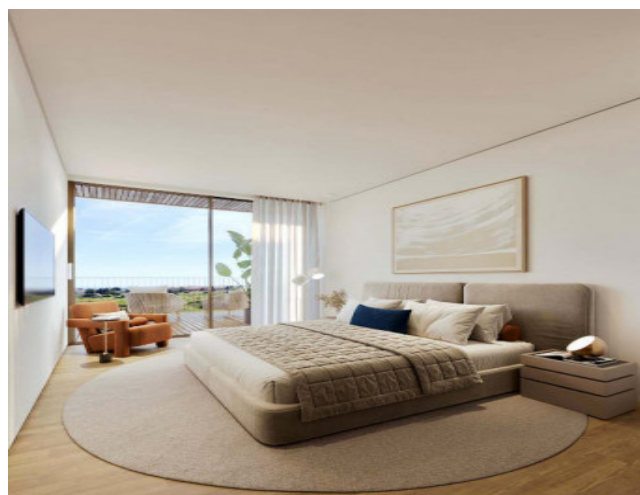
Ducted air conditioning, video surveillance, intrusion, flood and fire detection systems, as well as home automation for centralized control.

#### Location and Lifestyle:

Located in Vilamoura, a privileged destination just 30 minutes from Faro Airport, this development offers access to an award-winning marina, world-class golf courses, stunning beaches and a wide range of restaurants and entertainment.



## Gallery



Telephone: +351 213 471 603  
Email: [info@portugalhomes.com](mailto:info@portugalhomes.com)

Praça da Alegria 1, 3rd Floor, 1250-004 Lisboa, Portugal Licence AMI - 14414 | APEMIP 5940

## Additional Details

Property Features

Pool	A/C	Garden
------	-----	--------

# Site Floorplan