



€760,000

Ref: PP175026

Location: Central Vilamoura Proximity: 5 minutes from the Marina Floors: 3 (Underground, Ground Floor, First Floor)
Features: Effortless garden, spacious balcony, independent underground flat Property...

• A/C

• Garden

Telephone: +351 213 471 603
Email: info@portugalhomes.com

Praça da Alegria 1, 3rd Floor, 1250-004 Lisboa, Portugal Licence AMI - 14414 | APEMIP 5940

 Portugal
Homes

Property Description

Location: Central Vilamoura

Proximity: 5 minutes from the Marina

Floors: 3 (Underground, Ground Floor, First Floor)

Features: Effortless garden, spacious balcony, independent underground flat

Property Details

Ground Floor:

Entrance Hall: Welcoming space that leads to the various rooms on this floor.

Office: Ideal for a home workspace or study area.

Bathroom: Convenient for guests and daily use.

Living and Dining Room: An expansive area perfect for relaxation and entertaining.

Kitchen with Pantry: Fully equipped with ample storage and preparation space.

Storage Room: Extra space to keep your belongings organised.

First Floor:

Bedrooms: 3 spacious bedrooms, including a master bedroom with an en-suite bathroom.

Large Bathroom: Servicing the two additional bedrooms with comfort and style.

Balcony: A large balcony providing a serene space to enjoy Vilamoura's beautiful lifestyle.

Lower Ground Floor:

Independent Flat: Transformed into a functional and self-sufficient flat.

Open-Plan Kitchen: Modern and fully integrated with the living and dining areas.

Living and Dining Room: Designed for comfort and flexibility.

Terrace: Additional outdoor space for relaxation or entertaining.

Bedroom: Cosy and spacious.

Bathroom: Well-appointed for convenience.

Large Closet and Storage: Plenty of room to keep everything in order.

Ideal for: Rentals or hosting guests, providing privacy and comfort.

Garden

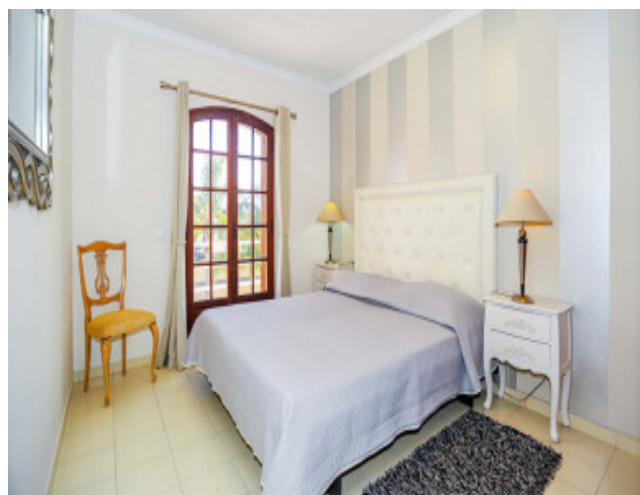
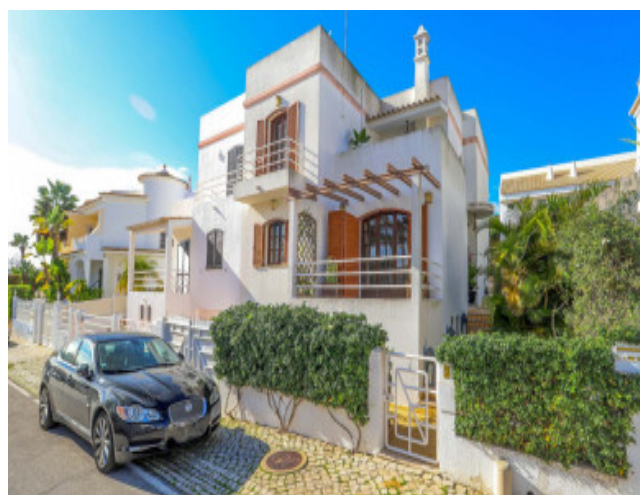
The property is surrounded by a low-maintenance garden, enhancing its charm and providing a peaceful outdoor retreat.

Lifestyle

Living in this townhouse offers you:

Proximity to the Marina: Just a 5-minute walk to enjoy waterfront dining, shopping, and leisure activities.

Gallery



Telephone: +351 213 471 603
Email: info@portugalhomes.com

Praça da Alegria 1, 3rd Floor, 1250-004 Lisboa, Portugal Licence AMI - 14414 | APEMIP 5940

Additional Details

Property Features

A/C	Garden
-----	--------

Site Floorplan