

€710,000

Ref: PP174758

With a modern and sophisticated architecture, this development still has two, two-bedroom apartments available, one on the first floor and another on the ground floor, both facing south and with generous...

- Pool
- A/C
- Garden

Telephone: +351 213 471 603
Email: info@portugalhomes.com

Praça da Alegria 1, 3rd Floor, 1250-004 Lisboa, Portugal Licence AMI - 14414 | APEMIP 5940



Property Description

With a modern and sophisticated architecture, this development still has two, two-bedroom apartments available, one on the first floor and another on the ground floor, both facing south and with generous balconies and terraces, ensuring a luxurious and comfortable life.

Enjoy a privileged location close to Vilamoura Marina, where you can find a wide variety of restaurants, shops, and entertainment, as well as the prestigious Millennium and Victoria golf courses.

The apartments feature high-quality finishes and are equipped with the latest technologies, including air conditioning, thermal electric blinds, and heated flooring, providing maximum comfort in all seasons of the year.

Each unit has a generous terrace, perfect for enjoying the mild climate of the Algarve, and benefits from a parking space and storage room in the basement.

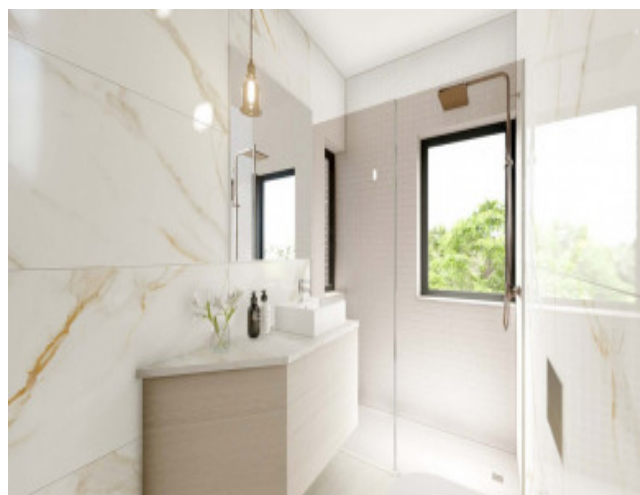
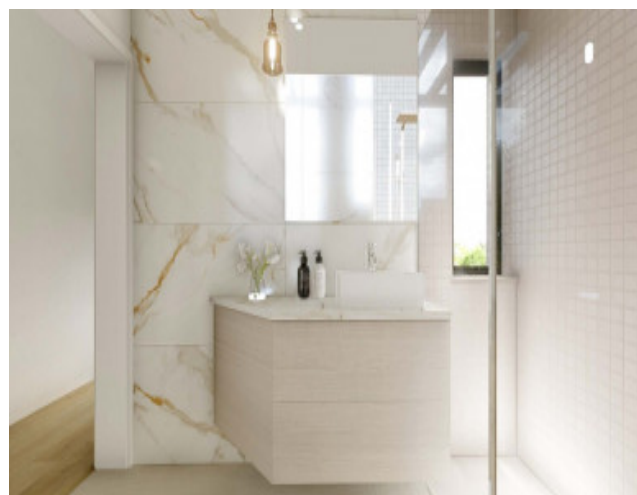
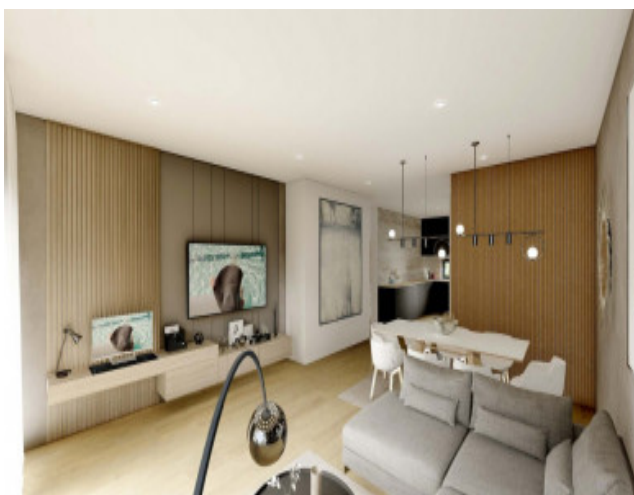
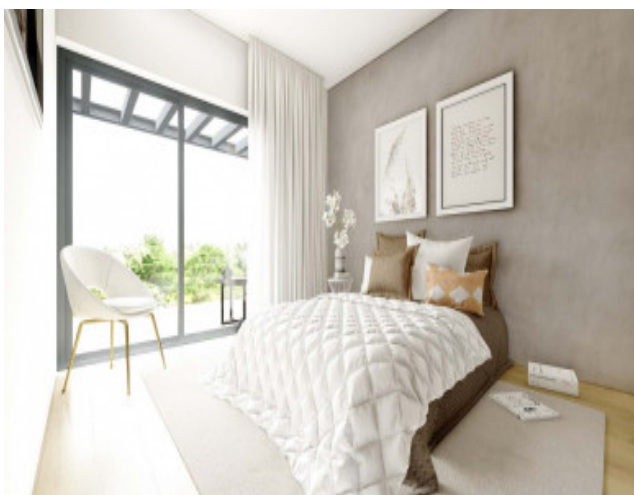
Common areas include a stunning outdoor swimming pool and ample green spaces, ideal for leisure and relaxation in contact with nature.

Vilamoura is known for its quality of life and leisure offerings, with golden sandy beaches, world-renowned golf courses, and a lively nightlife.

Don't miss this opportunity to invest in a unique and sophisticated lifestyle in the heart of the Algarve.

Schedule your visit now, and come discover your new home in Vilamoura!

Gallery



Telephone: +351 213 471 603
Email: info@portugalhomes.com

Praça da Alegria 1, 3rd Floor, 1250-004 Lisboa, Portugal Licence AMI - 14414 | APEMIP 5940

Additional Details

Attributes

Status Available	Gross Area 103sq m	Year Built 2025
----------------------------	------------------------------	---------------------------

Property Features

Pool	A/C	Garden
------	-----	--------

Site Floorplan