



€305,000

Ref: PP174575

Excellent two-bedroom, two-bathroom apartments that are currently under construction in the charming fishing town of Olhao. This is a quality brand new condominium with an elevator, an underground...

- Pool

- A/C

Telephone: +351 213 471 603
Email: info@portugalhomes.com

Praça da Alegria 1, 3rd Floor, 1250-004 Lisboa, Portugal Licence AMI - 14414 | APEMIP 5940



Property Description

Excellent two-bedroom, two-bathroom apartments that are currently under construction in the charming fishing town of Olhao.

This is a quality brand new condominium with an elevator, an underground garage, and a swimming pool on the roof terrace with open views all around.

These apartments are very bright and spacious. From the entrance hall, there is an open-plan living/dining room and kitchen, as well as a pleasant long balcony with open views.

The modern kitchen is fully fitted and equipped with Bosch appliances.

The two bedrooms, one of which is en-suite, are bright, and they all come with air conditioning.

The apartments also have a lovely, large terrace, perfect for taking in the 300 days of Algarvian sun.

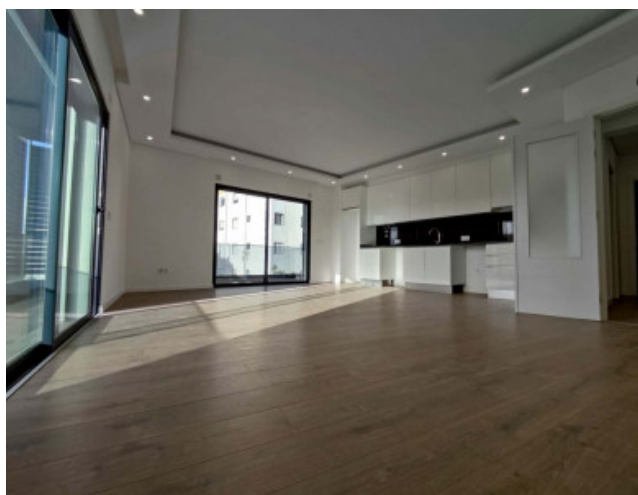
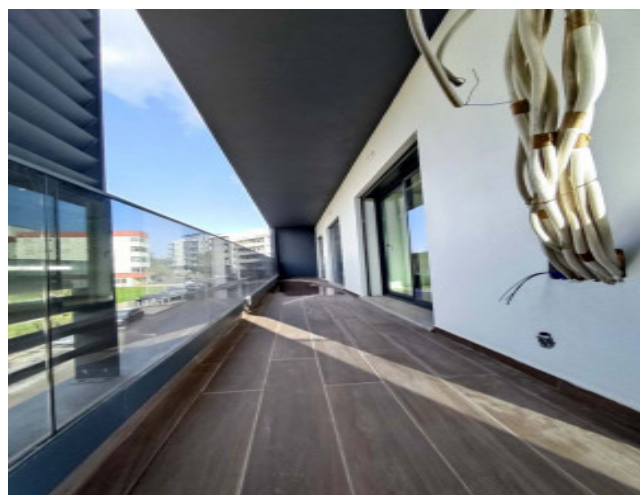
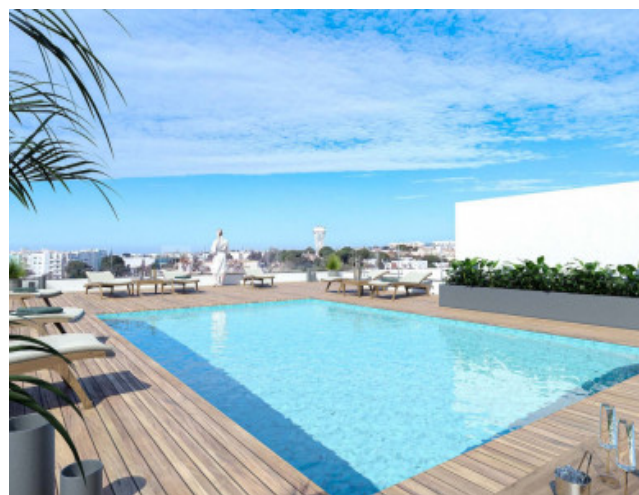
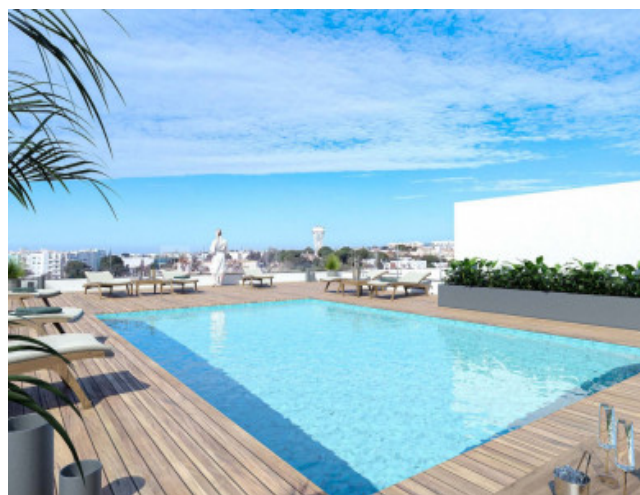
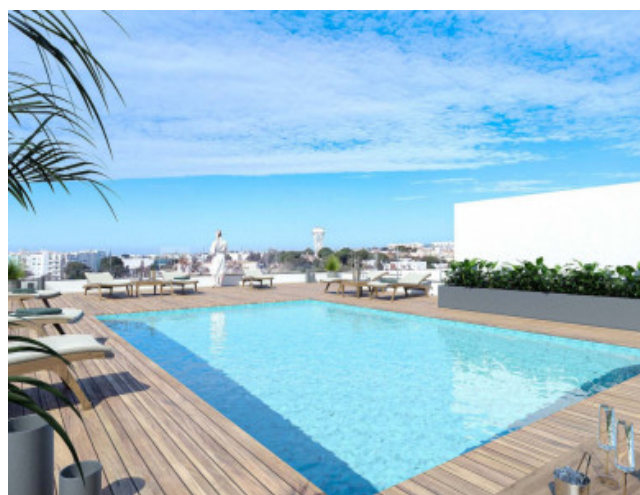
The building has elevators and an underground garage, it also has a stunning roof terrace with a swimming pool and amazing views.

Located in a charming area of Olhao, close to the beach and the lovely sea promenade with its typical fish restaurants. It is also close to supermarkets and amenities. easy access to main roads and is only 15 minutes away from Faro International Airport.

This property represents an ideal investment for year-round living or holiday rentals.

Completion at the end of 2025.

Gallery



Telephone: +351 213 471 603
Email: info@portugalhomes.com

Praça da Alegria 1, 3rd Floor, 1250-004 Lisboa, Portugal Licence AMI - 14414 | APEMIP 5940

Additional Details

Attributes

Status	Gross Area	Year Built
Available	94sq m	2024

Property Features

Pool	A/C
------	-----

Site Floorplan