



€1,665,000

Ref: PP174429

Apartment with sea and nature reserve views, excellent sun exposure, and generous balconies. Enjoying a complete bathroom with suspended sinks and built-in taps, pantry, fully...

- Pool
- A/C
- Garden

Telephone: +351 213 471 603  
Email: [info@portugalhomes.com](mailto:info@portugalhomes.com)

Praça da Alegria 1, 3rd Floor, 1250-004 Lisboa, Portugal Licence AMI - 14414 | APEMIP 5940



## Property Description

Apartment with sea and nature reserve views, excellent sun exposure, and generous balconies. Enjoying a complete bathroom with suspended sinks and built-in taps, pantry, fully equipped top-of-the-line kitchen, ducted air conditioning, exterior blackouts, exterior shading systems, minimalist frames, natural stones, flooring in laminated oak flooring, full-height doors with hidden hinges, LED lighting, home automation with central panel, alarm set in a condominium of two buildings interconnected by a common green space with an elegant and distinctive entrance hall, two outdoor swimming pools, a heated indoor swimming pool, gym, massage room, social room, underground parking, and storage space.

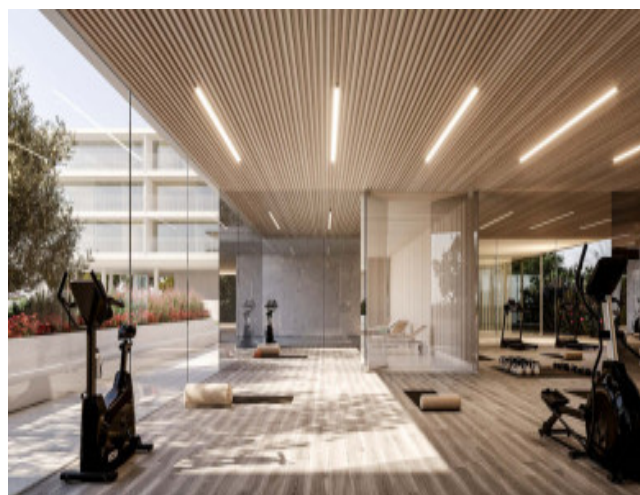
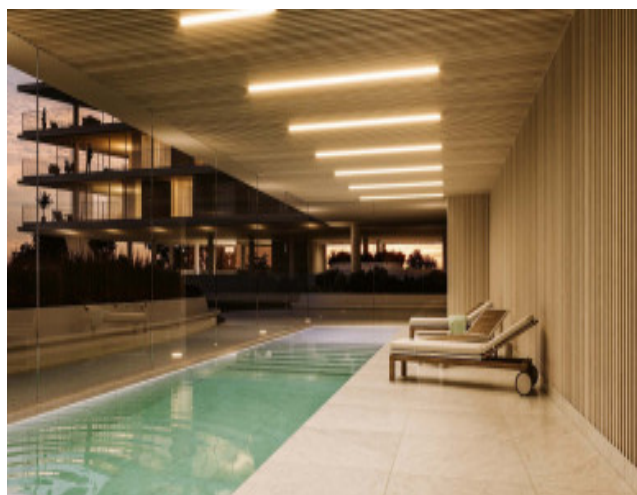
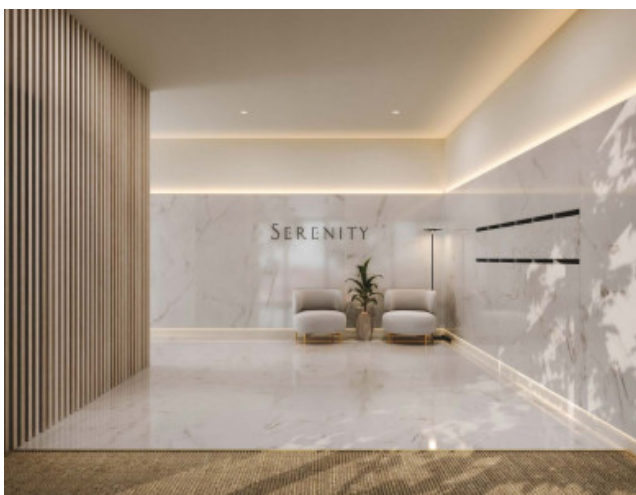
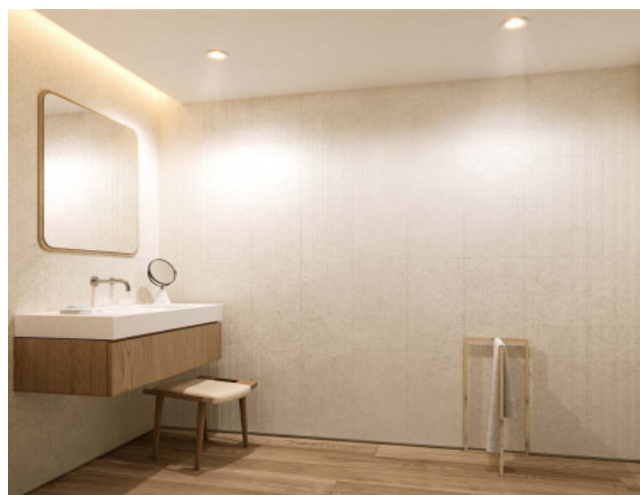
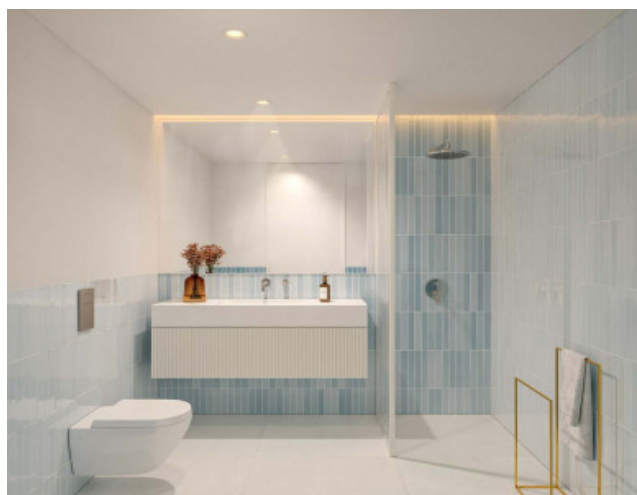
Differentiating and high-quality finishes, concierge and surveillance systems in common areas, private parking space on a single floor, and underground parking with an electric charging point.

Reinforced common spaces enhance the outdoor experience.

These are two buildings that rise from the ground and take advantage of the visual permeability. The balconies are an extension of the interior that develops over the green spaces, a simple and minimalist language, rhythmmed by the glazed spaces that mark the facade.



## Gallery



Telephone: +351 213 471 603  
Email: [info@portugalhomes.com](mailto:info@portugalhomes.com)

Praça da Alegria 1, 3rd Floor, 1250-004 Lisboa, Portugal Licence AMI - 14414 | APEMIP 5940

## Additional Details

Property Features

Pool	A/C	Garden
------	-----	--------

# Site Floorplan