

€250,000

Ref: PP174393

Plot with 663.78m² with approved project for construction of a single-family house with a footprint of 245.46m² and a total construction area of 362.46m². Project features Ground floor/basement and 1st...

Telephone: +351 213 471 603
Email: info@portugalhomes.com

Praça da Alegria 1, 3rd Floor, 1250-004 Lisboa, Portugal Licence AMI - 14414 | APEMIP 5940



Property Description

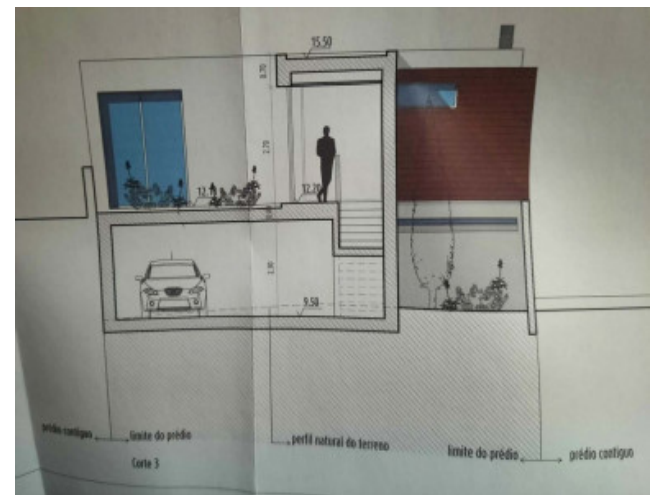
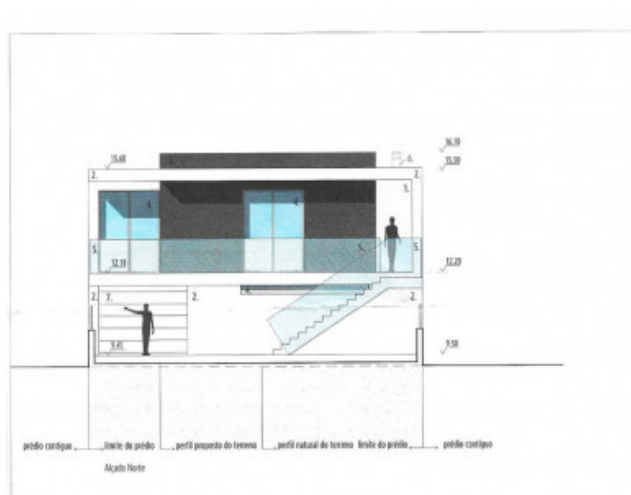
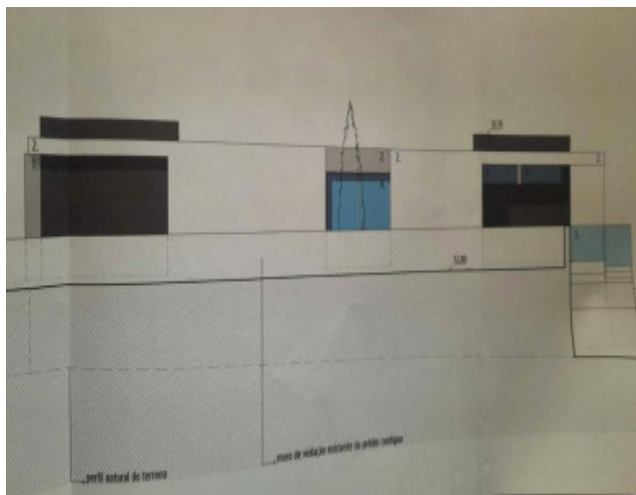
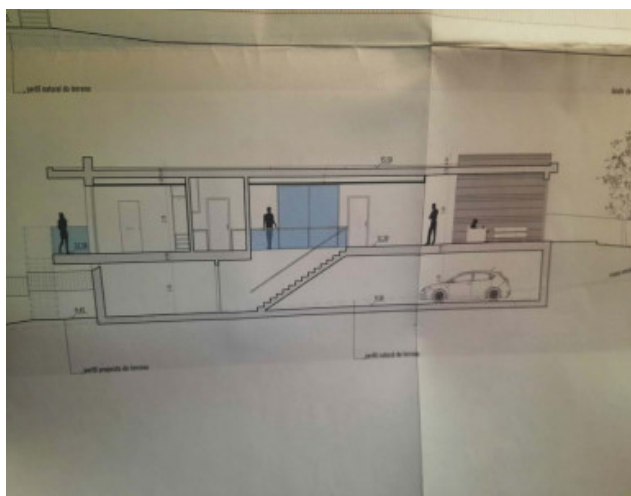
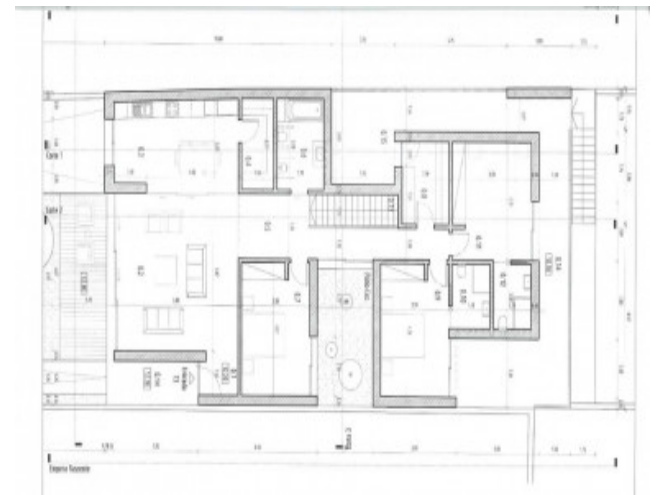
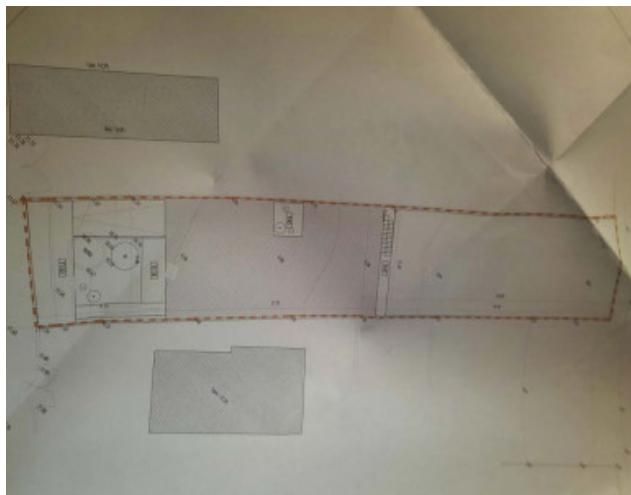
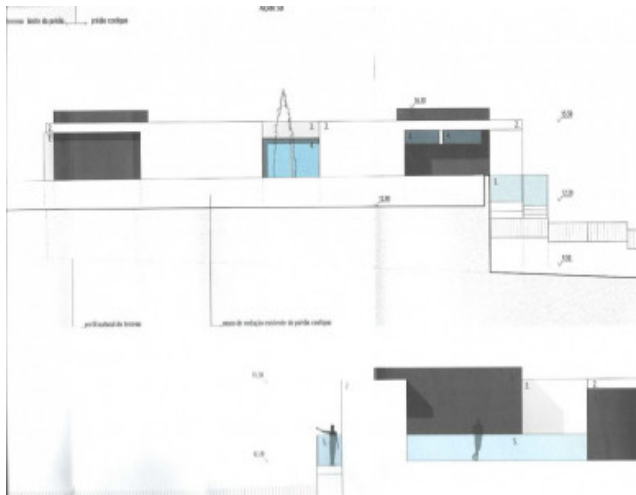
Plot with 663.78m² with approved project for construction of a single-family house with a footprint of 245.46m² and a total construction area of 362.46m².

Project features Ground floor/basement and 1st floor V4, (2 en suite) 3 bathrooms with possibility of building a swimming pool and large garden

The land has access via a tarmac street, public water, sewage, electricity and public lighting.

Located 5 minutes from the beach, 10 minutes from Vilamoura Marina

Don't miss this opportunity to build a custom-made house for your permanent home or vacation, integrated into the prestigious Golden Triangle.



Telephone: +351 213 471 603

Email: info@portugalhomes.com

Praça da Alegria 1, 3rd Floor, 1250-004 Lisboa, Portugal Licence AMI - 14414 | APEMIP 5940

Additional Details

Site Floorplan