

€630,000

Ref: PP174258

This is more than just an apartment project; it's a statement of contemporary luxury in the heart of Vilamoura. Comprising 48 units of 2-bed and 3-bed apartments, this exclusive private condominium...

• Pool

• A/C

Telephone: +351 213 471 603
Email: info@portugalhomes.com

Praça da Alegria 1, 3rd Floor, 1250-004 Lisboa, Portugal Licence AMI - 14414 | APEMIP 5940

 **Portugal
Homes**

Property Description

This is more than just an apartment project; it's a statement of contemporary luxury in the heart of Vilamoura. Comprising 48 units of 2-bed and 3-bed apartments, this exclusive private condominium offers a lifestyle of unparalleled comfort and sophistication. With a host of amenities, a prime location, and a carefully designed layout, this development redefines the concept of modern living.

Key Features:

Abundant Leisure: Enjoy the serenity of not one but two common pools, perfect for refreshing swims, sunbathing, and relaxation, all within the private enclave of the condominium.

Secure Parking: Your vehicles will find a secure home in the underground parking garage, providing convenience and peace of mind.

Owner's Retreat: An exclusive private lounge for owners awaits, providing a space for social gatherings, meetings, or simply a tranquil escape.

Prime Location: Nestled in a well-established area of Vilamoura, adjacent to the prestigious Hotel Anantara, this development offers proximity to one of Vilamoura's magnificent golf courses, the bustling Marina of Vilamoura, sun-kissed beaches, the serene Environmental Park, and the world-class International School of Vilamoura. This is a location that epitomizes convenience and luxury living.

Sun-Kissed Design: The development has been thoughtfully oriented to the south, ensuring that each apartment benefits from maximum natural light and sun exposure. Embrace a warm, inviting ambiance throughout the day.

Completion Date: Scheduled for September 2024, this development is on track to become your new haven of comfort and style.

Unit Details:

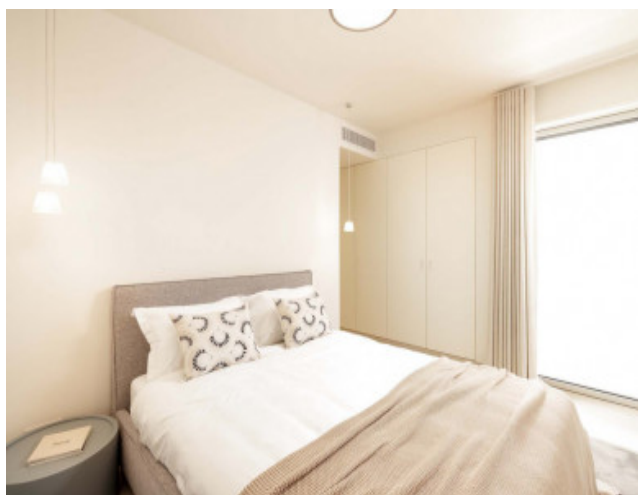
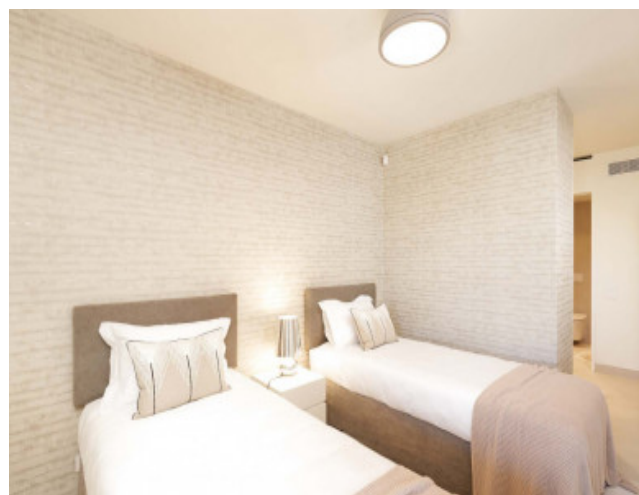
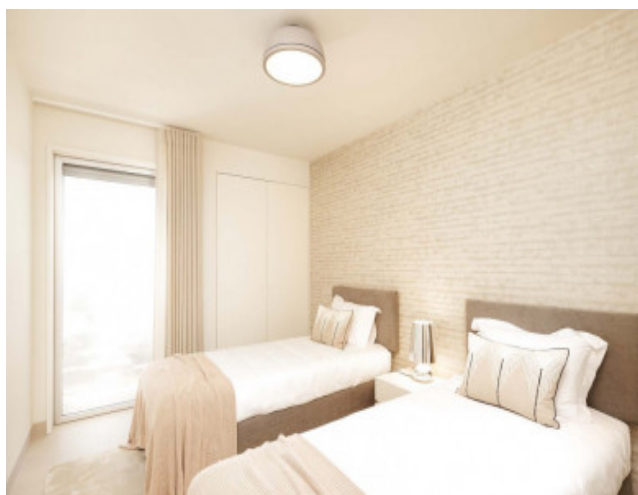
Variety of Options: Choose from a selection of 2-bed and 3-bed apartments, each offering a blend of modern design, spacious living areas, and high-quality finishes.

2 bed options start at €600,000

3 bed options start at €770,000

This is not just a residence; it's a lifestyle that harmonizes comfort, luxury, and convenience. Don't miss your opportunity to be part of this exceptional project.

Gallery



Telephone: +351 213 471 603
Email: info@portugalhomes.com

Praça da Alegria 1, 3rd Floor, 1250-004 Lisboa, Portugal Licence AMI - 14414 | APEMIP 5940

Additional Details

Attributes

Status	Gross Area	Year Built
Available	95sq m	2024

Property Features

Pool	A/C
------	-----

Site Floorplan