



€2,300,000

Ref: PP173863

Welcome to this exquisite property nestled in the sought-after area of Vilamoura, where a serene cul-de-sac leads you to a haven of comfort and elegance. Perfectly positioned for easy access to the vibrant...

- Pool
- A/C
- Garden

Telephone: +351 213 471 603
Email: info@portugalhomes.com

Praça da Alegria 1, 3rd Floor, 1250-004 Lisboa, Portugal Licence AMI - 14414 | APEMIP 5940



Property Description

Welcome to this exquisite property nestled in the sought-after area of Vilamoura, where a serene cul-de-sac leads you to a haven of comfort and elegance. Perfectly positioned for easy access to the vibrant marina, this enchanting villa offers a wealth of amenities, including stunning golf course views, a magnificent garden with a large pool, a captivating pond, and a soothing waterfall cascading into the pond.

The ground floor of this residence boasts spaciousness and sophistication. The large open lounge area is bathed in natural light, inviting you to unwind and entertain in style. An exceptional feature of this home is the unique dining room with a charming brick ceiling, adding character and warmth to your dining experience. The well-appointed kitchen is a chef's dream, providing ample space and modern amenities for culinary endeavours.

Accommodation is generous, with three bedrooms on the ground floor, each thoughtfully designed with en-suite bathrooms, offering privacy and convenience for family and guests. Additionally, a laundry area ensures practicality in daily living.

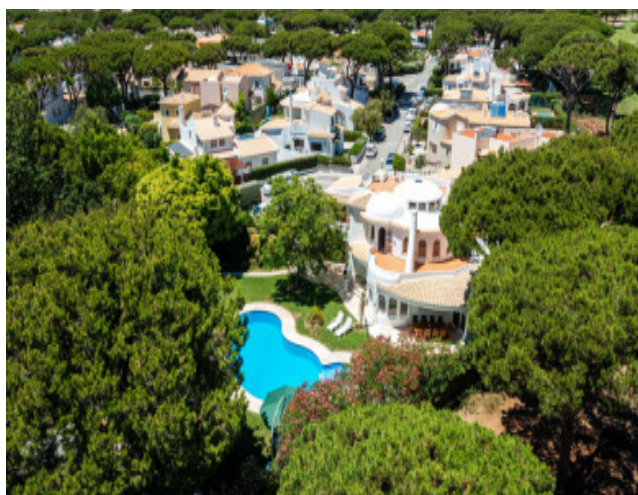
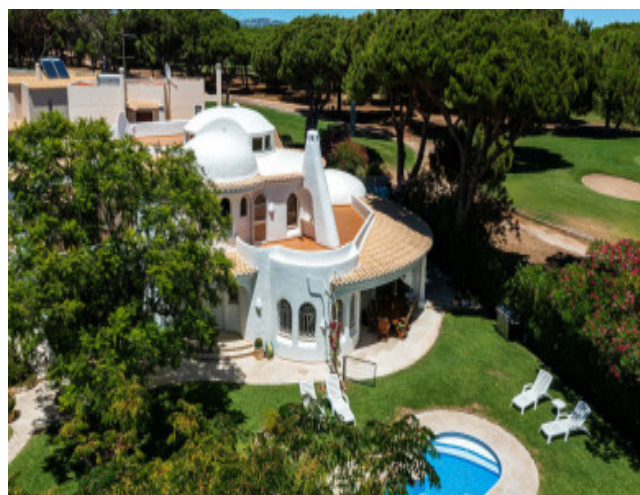
Venturing to the upper level, you'll discover the master bedroom, a private sanctuary complete with a wrap-around terrace overlooking the picturesque golf course. This delightful retreat also boasts a walk-in wardrobe and a lavish en-suite, where you can indulge in relaxation and tranquility. Adjacent to the master bedroom is another en-suite bedroom, ideal for versatility and comfort. An inviting cosy sitting area with a circle brick ceiling creates an intimate space for quiet moments of reflection.

The basement is a hub of entertainment and leisure, currently utilised as a spacious games room and gym. Ample storage and a garage complete this level, providing convenience and organisation to meet all your needs.

Adding to the allure of this property is a separate apartment with its own entrance, perfect for accommodating guests or creating a private living space. The apartment features a kitchen, lounge area, bedroom and bathroom, making it an ideal spot for extended family members or friends.

Experience the epitome of luxury living in this beautiful villa, where golf course views, a lush garden, and modern amenities blend harmoniously, providing you with an exceptional lifestyle in Vilamoura. Don't miss the opportunity to call this remarkable property your new home. Schedule a private viewing today and envision the extraordinary life that awaits you.

Gallery



Telephone: +351 213 471 603
Email: info@portugalhomes.com

Praça da Alegria 1, 3rd Floor, 1250-004 Lisboa, Portugal Licence AMI - 14414 | APEMIP 5940

Additional Details

Attributes

Status	Gross Area	Year Built
Available	678sq m	1993

Property Features

Pool	A/C	Garden
------	-----	--------

Site Floorplan