

€400,000

Ref: PP173730

Situated in the southwest of the Algarve. Lagos and Sagres are easily accessible by car in less than 20 minutes. On the edge of the Costa Vicentina Natural Park, there is so much to explore and activities...

- Pool

- A/C

Telephone: +351 213 471 603
Email: info@portugalhomes.com

Praça da Alegria 1, 3rd Floor, 1250-004 Lisboa, Portugal Licence AMI - 14414 | APEMIP 5940

 **Portugal
Homes**

Property Description

Situated in the southwest of the Algarve. Lagos and Sagres are easily accessible by car in less than 20 minutes. On the edge of the Costa Vicentina Natural Park, there is so much to explore and activities to enjoy.

Located on the beautiful Salema Beach, the privacy and stunning ocean views of this development will astound you.

Salema is a picturesque fishing village in a charming bay with clear blue waters and whitewashed houses, the location is perfect if you like to escape the crowds and enjoy nature with the comfort of nearby facilities.

Located just 500 metres from the beach, Salema Beach Village comprises 114 units in a mixture of spacious two and three-bedroom villas with private terraces, flooding the properties with natural light. Furnished with modern clean lines, all properties are sold fully furnished and equipped - ready to move in.

Property owners will enjoy a number of excellent onsite facilities including:

- 24-hour security swimming pools
- Snack bar
- Padel courts, Outdoor gym
- Children's playground

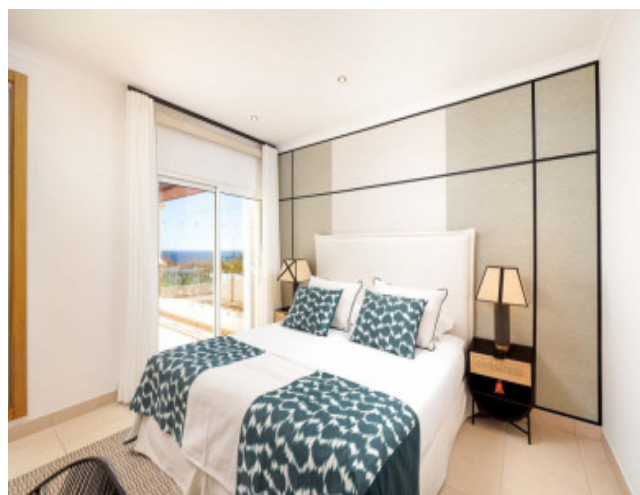
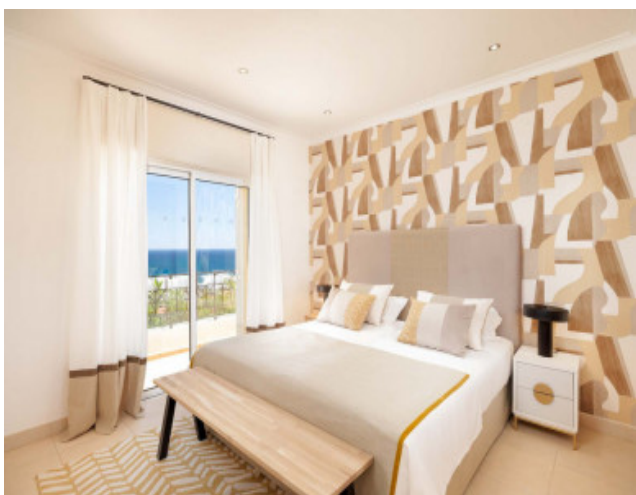
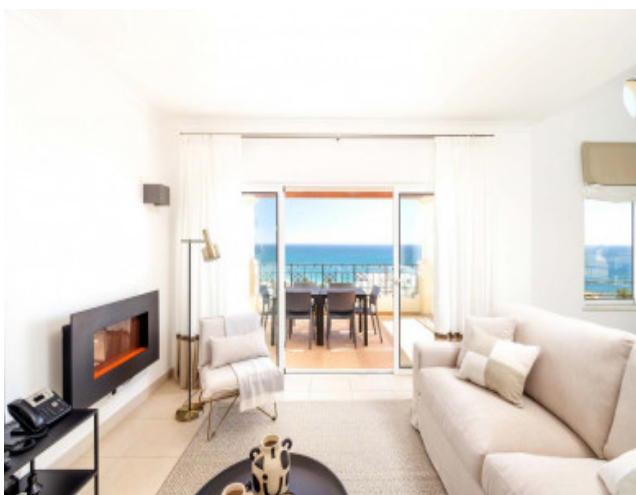
This development has several units for sale from €340,000 up to €555,000. Options of either a two or three-bedroom townhouse.

Some have incredible sea views, but all are a short walk from the beach

All properties come fully furnished

Energy Rating "B"

Gallery



Telephone: +351 213 471 603
Email: info@portugalhomes.com

Praça da Alegria 1, 3rd Floor, 1250-004 Lisboa, Portugal Licence AMI - 14414 | APEMIP 5940

Additional Details

Attributes

Status	Gross Area	Year Built
Available	120sq m	2016

Property Features

Pool	A/C
------	-----

Site Floorplan