



**€2,695,000**

Ref: PP173282

This superb 5-bedroom villa is located in one of Vilamoura's finest areas, directly overlooking the golf course. Completed in 2018, this south-west facing property oozes style and elegance. The...

- Pool
- A/C
- Garden

Telephone: +351 213 471 603  
Email: [info@portugalhomes.com](mailto:info@portugalhomes.com)

Praça da Alegria 1, 3rd Floor, 1250-004 Lisboa, Portugal Licence AMI - 14414 | APEMIP 5940



## Property Description

This superb 5-bedroom villa is located in one of Vilamoura's finest areas, directly overlooking the golf course.

Completed in 2018, this south-west facing property oozes style and elegance.

The layout:

The ground floor comprises a hallway, a storage room, a guest toilet, a north-facing en-suite bedroom, a lounge, an open-plan dining room, and a modern open-plan kitchen with SIEMENS appliances. These living areas have direct access to a beautiful covered terrace with a built-in BBQ and a magnificent heated swimming pool (salt treated) with open views of the golf course.

The 1st floor comprises 3 further en-suite bedrooms, 1 facing north and 2 facing south. These two share a large terrace, offering spectacular panoramic views and even distant sea views.

The basement comprises the 5th en-suite bedroom, a laundry room, a spacious garage, a cinema room, a games room, a wine cellar, an indoor garden, a covered terrace with direct access to the ground floor area via a staircase, a technical room and the pool room.

The property also offers a private carport and a large driveway to the garage on the side of the villa. The gardens are mature and require very little maintenance.

The villa is very comfortable and benefits from air conditioning throughout, as well as water underfloor heating on the ground and 1st-floor levels. It also features solar panels for hot water.

The location:

This particular neighbourhood is very tranquil, and it is conveniently located within Vilamoura, in Central Algarve:

Within a 2 km radius of supermarkets, private clinics, vet, pharmacy, cafés, restaurants, the Family Golf Park, Tennis and Padel academy, just to name a few

2.8 km away from the sought-after Vilamoura marina – distinguished as the best marina of 2021 by The Yacht Harbour Association (TYHA)

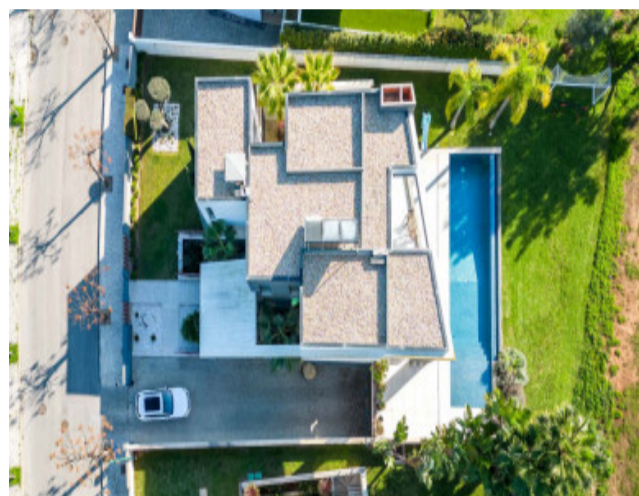
2.8 km away from the iconic Falésia beach

MarShopping centre, the Designer Outlet and IKEA are 18 km away

Faro airport is 25 km away

Vilamoura itself attracts many wealthy people from all over the world with its 5 championship golf courses, its 5-star infrastructure, the Vilamoura International School, the Equestrian centre and much, much more!

## Gallery



Telephone: +351 213 471 603

Email: [info@portugalhomes.com](mailto:info@portugalhomes.com)

Praça da Alegria 1, 3rd Floor, 1250-004 Lisboa, Portugal Licence AMI - 14414 | APEMIP 5940

## Additional Details

### Attributes

<b>Status</b> Available	<b>Gross Area</b> 467sq m	<b>Year Built</b> 2018
----------------------------	------------------------------	---------------------------

### Property Features

Pool	A/C	Garden
------	-----	--------

## Site Floorplan

Telephone: +351 213 471 603

Email: [info@portugalhomes.com](mailto:info@portugalhomes.com)

Praça da Alegria 1, 3rd Floor, 1250-004 Lisboa, Portugal Licence AMI - 14414 | APEMIP 5940

