



€4,250,000

Ref: PP173093

Located at the top of the Anjos cliff, with a breathtaking view of the entire coast, from Praia dos Anjos, the waterfront and beach of Madalena do Mar to Calheta. Area with a unique microclimate, sun...

- Pool
- A/C
- Garden

Telephone: +351 213 471 603
Email: info@portugalhomes.com

Praça da Alegria 1, 3rd Floor, 1250-004 Lisboa, Portugal Licence AMI - 14414 | APEMIP 5940



Property Description

Located at the top of the Anjos cliff, with a breathtaking view of the entire coast, from Praia dos Anjos, the waterfront and beach of Madalena do Mar to Calheta.

Area with a unique microclimate, sun from morning to night and sunset over the sea.

From this merger, this magnificent integrated agrotourism project was born. It is from the land and local roots that it draws the traits that inspired its creation.

It is as soon as you go down the lane at the entrance that the eye looks over the immense deep and sparkling blue of the ocean, capturing all the senses.

Continuing to descend, the space opens up in an impressive extension of the creative line, extending the view to infinity, very well achieved in the constructive detail of the housing cover, from the ground level to where the view reaches, like a temple, making the connection from earth to heaven.

This contemporary built part has a base buried in the ground, projecting itself in a long reinforced concrete volume up to the cliff and blending into the landscape, with the camouflage adopted in the landscaped roof.

The form and the meaning were reconciled to establish a communication with the place, lightened by the extensive spans all glazed, highlighting the interior areas with their high ceilings.

On the upper level, there is a small lounge as an antechamber to the master suite, with dressing room, complete bathroom with shower, featured bathtub, culminating in leafy windows overlooking the sea. On the lower level, is the entrance hall, garage, circulation area, stairs, laundry room, pantry, bathroom, open space kitchen, 2 suites with shower, a large lounge with balcony. All this opens onto the wonderful garden, solarium and the fabulous infinity pool with an integrated jacuzzi.

The traditional built part is a house with exposed stone walls and covered with roof tiles, with windows and shutters, taking advantage of the surrounding landscape, giving rise to an independent house with 2 floors. Upstairs is a spacious bedroom with a private bathroom. On the lower floor is the kitchenette, the social area, the access stairs, bathroom, storage and outside the solarium and parking area.

Along the property there is a pedestrian access route to the agricultural area, which ends in a viewpoint with a bench and a picnic table, inviting to linger and contemplate the stunning beauty of the landscapes that comprise the agricultural fields, the cliff and the vertiginous descent over the sea.

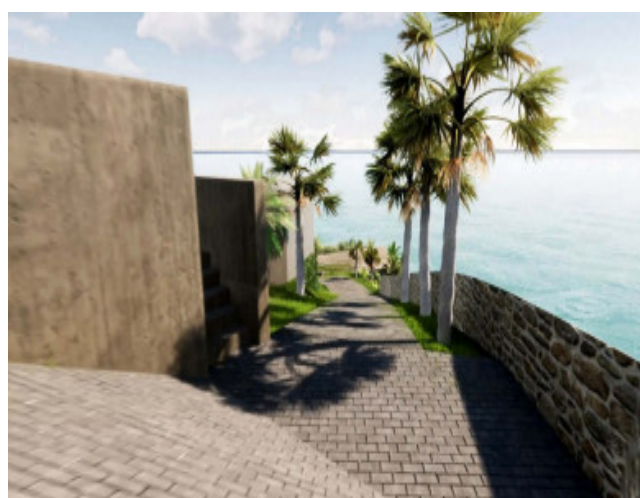
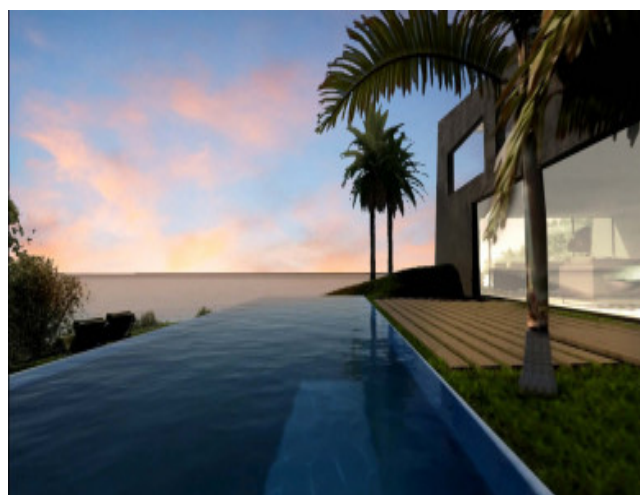
The boundary walls of the land are made of stone, characteristic of Madeira properties, with terraces, locally called "poios", in the region's natural stone, basalt, so unique, which gives beauty and charm to the entire Madeiran countryside.

The entire agricultural area will be cultivated with subtropical crops, well adapted to the local climate, namely fruit trees such as mango and papaya, with the climbing fruit plant, the passion fruit, around the walls.

Completion of the work scheduled for December 2023.

There will be more to say, for sure! but we leave it to the interested eye of those who want to learn about this unique

Gallery



Telephone: +351 213 471 603
Email: info@portugalhomes.com

Praça da Alegria 1, 3rd Floor, 1250-004 Lisboa, Portugal Licence AMI - 14414 | APEMIP 5940

Additional Details

Property Features

Pool	A/C	Garden
------	-----	--------

Site Floorplan