



# €395,000

Ref: PP6950

This condominium is located in the central area of São Brás de Alportel, the development will satisfy your need to live in a quiet place but with everything close by. The building,...

- A/C

Telephone: +351 213 471 603  
Email: [info@portugalhomes.com](mailto:info@portugalhomes.com)

Praça da Alegria 1, 3rd Floor, 1250-004 Lisboa, Portugal Licence AMI - 14414 | APEMIP 5940





## Property Description

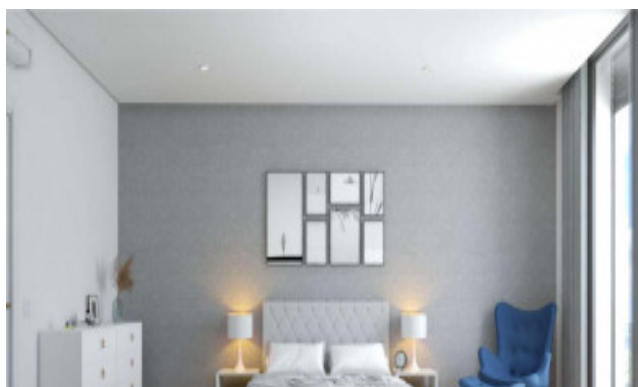
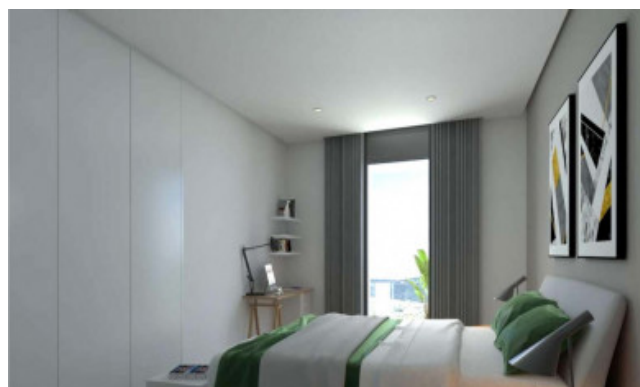
This condominium is located in the central area of São Brás de Alportel, the development will satisfy your need to live in a quiet place but with everything close by.

The building, is under completion, consists of 3 housing floors, with typologies ranging between T1 (one bedroom) and T4 (four bedrooms).

The apartments have large areas, plenty of natural light and views of excellence. Built with materials and quality workmanship to ensure your comfort and satisfaction.

### Features:

- Fully equipped kitchen,
- Ceramic floors in social areas,
- Wooden floors in the rooms,
- Aluminium frames with thermal cut and double glazing,
- LED lighting,
- Pre-installation of air conditioning in all rooms
- Video intercom system.



Telephone: +351 213 471 603

Email: [info@portugalhomes.com](mailto:info@portugalhomes.com)

Praça da Alegria 1, 3rd Floor, 1250-004 Lisboa, Portugal Licence AMI - 14414 | APEMIP 5940

## Additional Details

### Attributes

Status	Gross Area	Year Built
Sold	201sq m	2022

### Property Features

A/C
-----

# Site Floorplan