



€3,800,000

Ref: PP6317

Overlooking multiple holes (in particular 1, 2, 6, and 9) of the magnificent and awarded Jack Nicklaus Signature Golf Course (North Course) within the Monte Rei Golf&Country Club, one of the most...

- Pool
- A/C
- Garden

Telephone: +351 213 471 603
Email: info@portugalhomes.com

Praça da Alegria 1, 3rd Floor, 1250-004 Lisboa, Portugal Licence AMI - 14414 | APEMIP 5940



Property Description

Overlooking multiple holes (in particular 1, 2, 6, and 9) of the magnificent and awarded Jack Nicklaus Signature Golf Course (North Course) within the Monte Rei Golf&Country Club, one of the most exclusive resorts in the Algarve, this property is an outstanding and high-end example for pure Excellence.

With a choice of high-quality construction materials, top selection of equipment, and building systems this villa offers a luxurious and most relaxed lifestyle embedded in the „paradise“ of the natural and preserved East-Algarvian landscape.

The property has panoramic golf, countryside, and ocean views from all rooms, and the 5 terraces including a high-point rooftop terrace.

5 bedrooms with en-suite bathroom

Separate apartment with kitchenette

Extraordinary 50m² roof terrace (360 panoramic views)

Thyssen Elevator (basement -1st-2nd-roof terrace)

2 car plus golf buggy garage with separate WC

Main two-story-high living room with gallery/library

Cinema room/Bar with built-in surround sound system

Large outdoor BBQ area and outdoor kitchen with MIELE/deDietrich kitchen equipment (overlooking the 6th green)

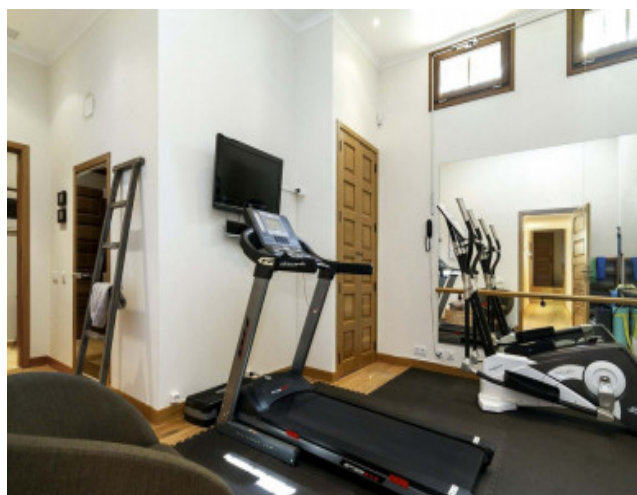
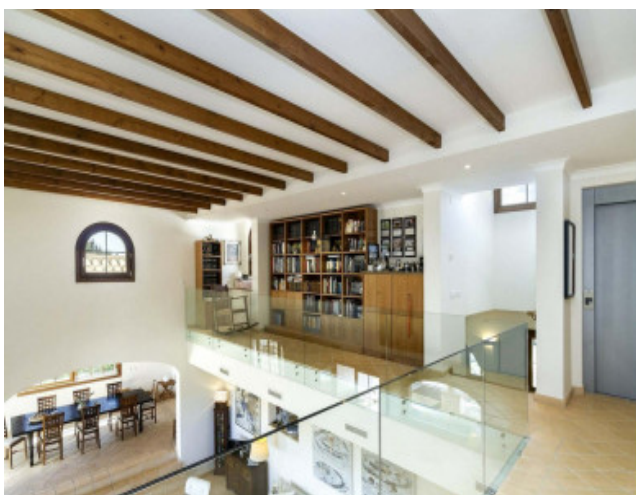
Top-quality log effect gas fireplaces (incl. one in the master bedroom) – 1 real wood fireplace

Turkish steam bath with separate shower and fully equipped Gym

2 heated swimming pools (main pool 12x5 and evening sun 4x4)

Private putting green with 5 holes

Gallery



Telephone: +351 213 471 603
Email: info@portugalhomes.com

Praça da Alegria 1, 3rd Floor, 1250-004 Lisboa, Portugal Licence AMI - 14414 | APEMIP 5940

Additional Details

Property Features

Pool	A/C	Garden
------	-----	--------

Site Floorplan