

# €1,400,000

Ref: PP3042

This sea view land with great potential located less than 5 minutes from Vilamoura and its magnificent golf courses, with the possibility to build up to 5 individual private villas with panoramic...

Telephone: +351 213 471 603

Email: [info@portugalhomes.com](mailto:info@portugalhomes.com)

Praça da Alegria 1, 3rd Floor, 1250-004 Lisboa, Portugal Licence AMI - 14414 | APEMIP 5940

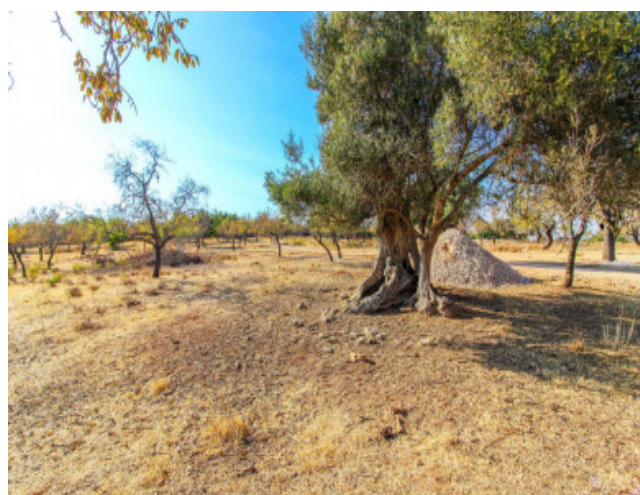




## Property Description

This sea view land with great potential located less than 5 minutes from Vilamoura and its magnificent golf courses, with the possibility to build up to 5 individual private villas with panoramic terraces to contemplate the breath-taking views, swimming pool, or any number less than this depending on individual requirements.

This is a unique investment opportunity in a spectacular location.



Telephone: +351 213 471 603

Email: [info@portugalhomes.com](mailto:info@portugalhomes.com)

Praça da Alegria 1, 3rd Floor, 1250-004 Lisboa, Portugal Licence AMI - 14414 | APEMIP 5940

# Additional Details

# Site Floorplan