

# €1,375,000

Ref: PP770

Pine Cliffs is an established 70 hectare luxury resort located 25 Kms west of Faro airport on the Algarve coastline, managed by Starwood Hotels & Resorts. The resort features the 5-star Sheraton Algarve,...

- Pool
- A/C
- Garden

Telephone: +351 213 471 603  
Email: [info@portugalhomes.com](mailto:info@portugalhomes.com)

Praça da Alegria 1, 3rd Floor, 1250-004 Lisboa, Portugal Licence AMI - 14414 | APEMIP 5940





## Property Description

Pine Cliffs is an established 70 hectare luxury resort located 25 Kms west of Faro airport on the Algarve coastline, managed by Starwood Hotels & Resorts. The resort features the 5-star Sheraton Algarve, a Luxury Collection Hotel, and offers a selection of leisure activities with an exclusive 9-hole Golf Course & Golf Academy, Tennis Academy, Health Club, the renowned Porto Pirata Kids Village, Beach Club, 5 swimming pools and over 10 different Restaurants & Bars.

The two and three-bedroom townhouses reflect the perfect blend of architecture and interior design, producing an elegant and contemporary style. Let your heart decide what decoration style you like best, with décors following a brief influenced by minimalism and shades of white. Surely irresistible...

Besides these private areas, owners will have access to all of the resort's facilities.

### Service discounts

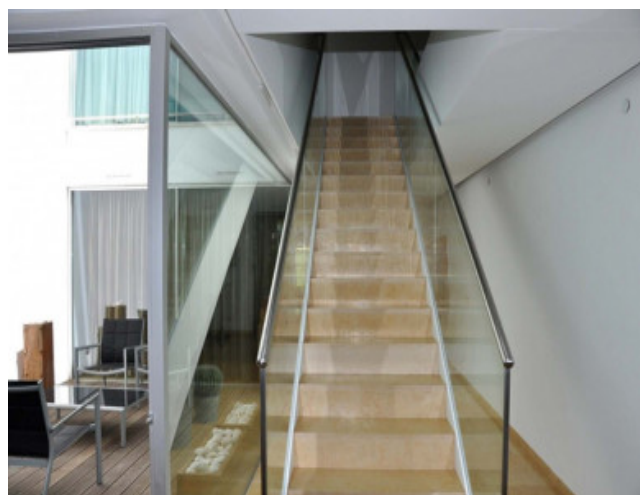
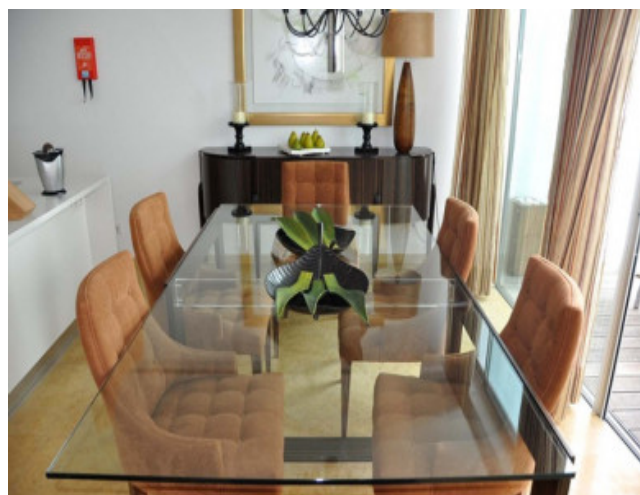
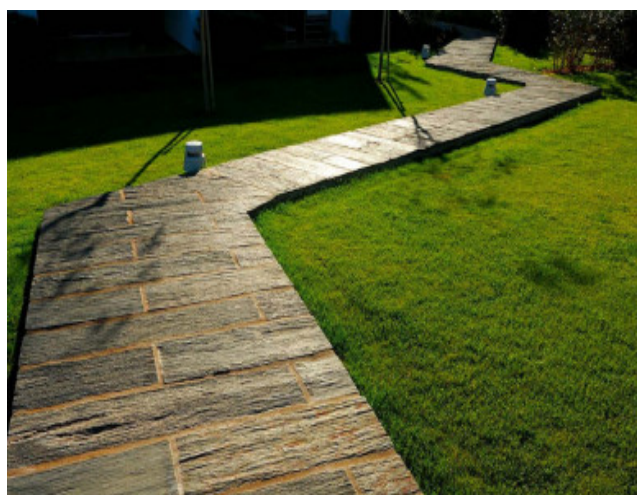
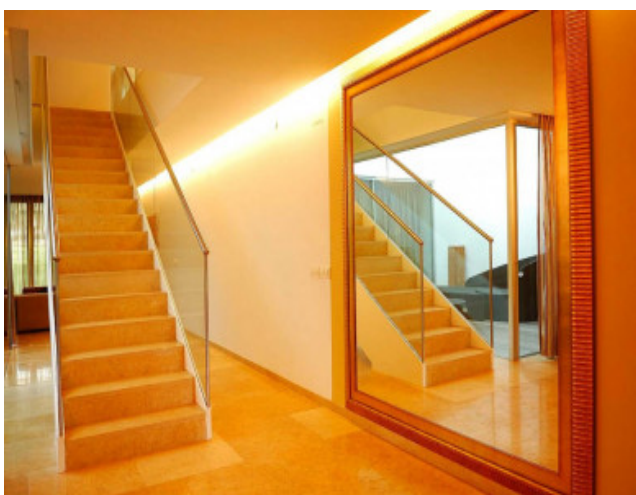
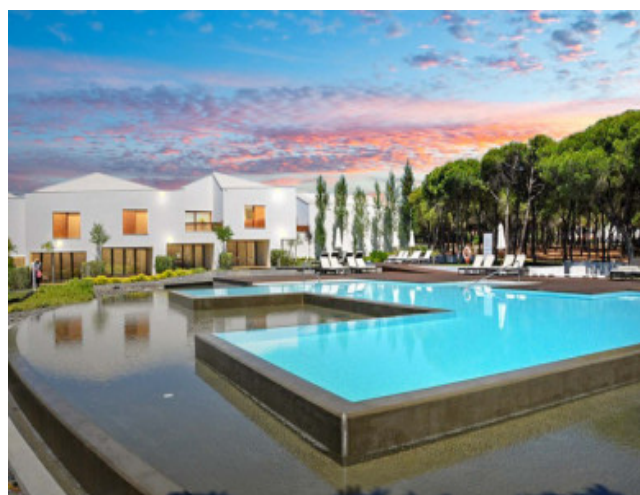
As an owner you will benefit from discounts on various services within the resort, including restaurants and bars, the beauty salon, children's village, tennis, laundry, hotel rates, boutique, amongst others, as defined by the managing company.

### Golf

As an owner of The Terraces, Pine Cliffs, you can also become a member of the Pine Cliffs Golf & Country Club, thus qualifying you for membership to the Portuguese Golf Federation (FPG), giving you an official and internationally recognised handicap. As a consequence, and as an owner, you can enjoy special discounts at Pine Cliffs golf course and other golf courses in the Algarve.



## Gallery



Telephone: +351 213 471 603  
Email: [info@portugalhomes.com](mailto:info@portugalhomes.com)

Praça da Alegria 1, 3rd Floor, 1250-004 Lisboa, Portugal Licence AMI - 14414 | APEMIP 5940



## Additional Details

Property Features

Pool	A/C	Garden
------	-----	--------

# Site Floorplan