



€350,000

Ref: BL1204

52 sqm

Apartments in Praia da Rocha, in Portimão, located in a tourist development with a privileged view over the Arade River...

Telephone: +351 213 471 603
Email: info@portugalhomes.com

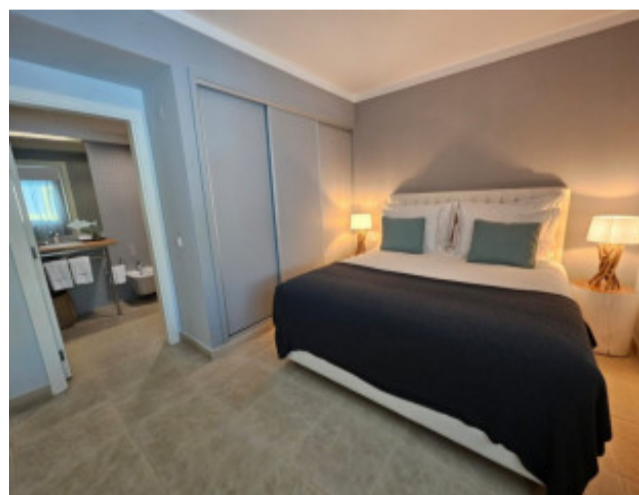
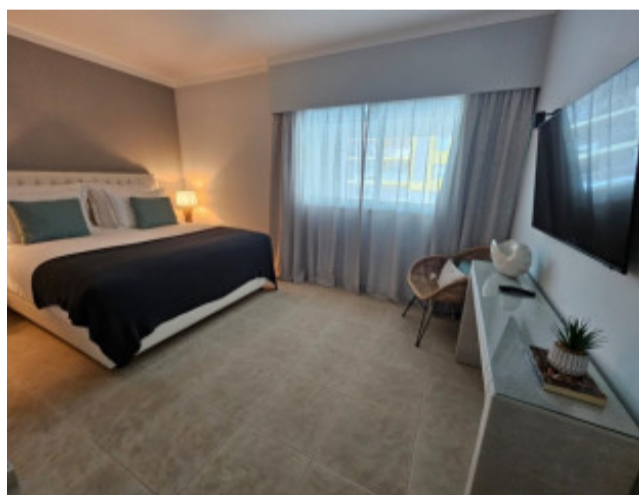
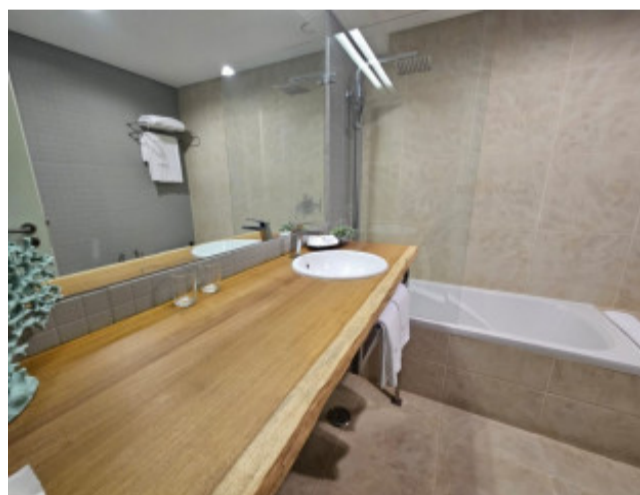
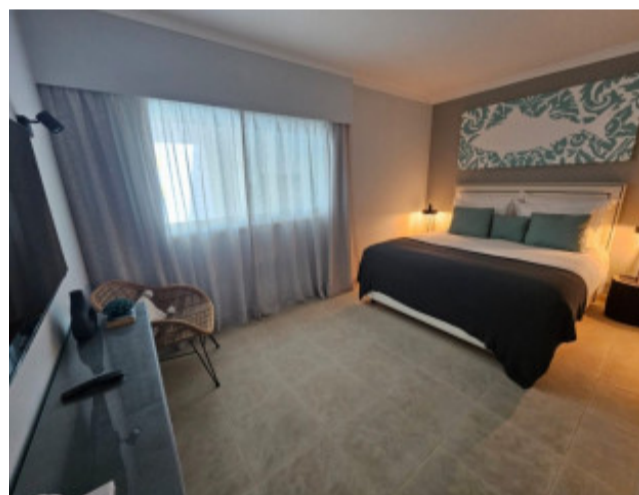
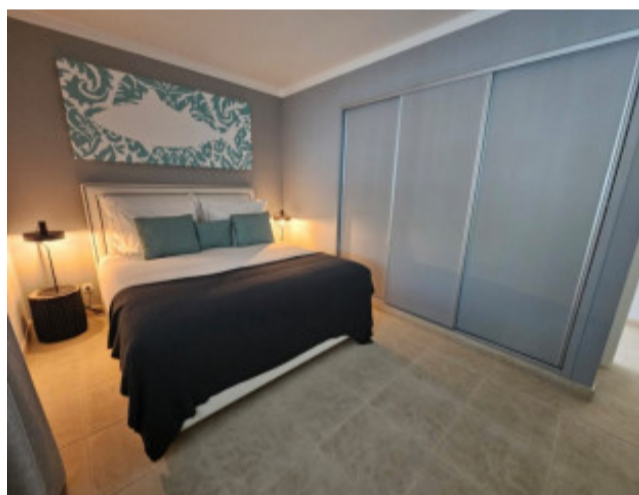
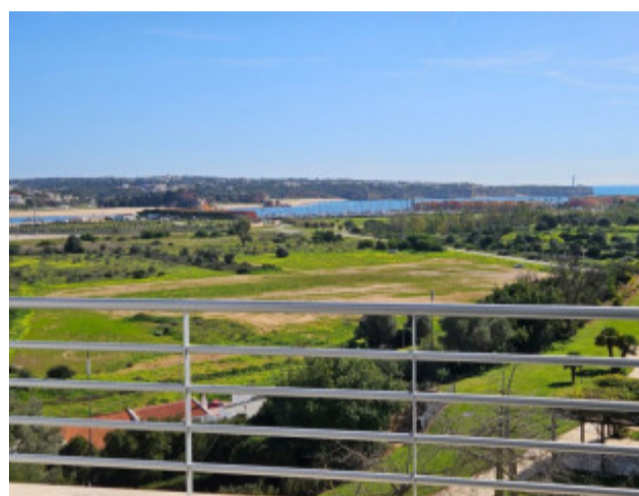
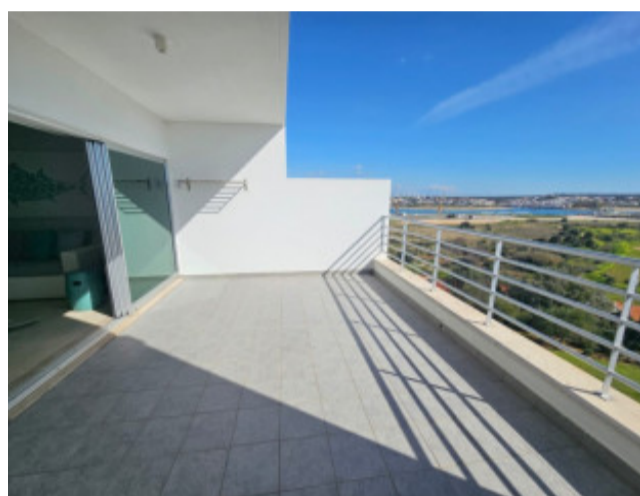
Praça da Alegria 1, 3rd Floor, 1250-004 Lisboa, Portugal Licence AMI - 14414 | APEMIP 5940



Property Description

Apartments in Praia da Rocha, in Portimão, located in a tourist development with a privileged view over the Arade River, Portimão Marina and the Ocean. Fully furnished, ready for immediate use or rental. Praia da Rocha remains a popular destination all year round, ensuring consistent rental income. Is one of the most sought after places in the Algarve, with easy access to stunning beaches, restaurants and leisure options. The development has a variety of amenities, including swimming pools, spa, indoor pool, gym, landscaped gardens and secure parking. It has a tourist license that benefits from professional management. It combines luxury and serenity, offering owners and investors a unique opportunity to acquire properties in an area of high tourist and investment demand, with strong rental potential and excellent appreciation. It has four options available: 1. Guaranteed 5% Return on Total Investment (conditional on purchasing the decoration package) This option offers a guaranteed 5% return on your total investment, along with two weeks of personal use per year. 2. Guaranteed Return of 2.5% on Total Investment With this option, you can enjoy 6 months of personal use for you or your family, between November 1st and April 30th, while benefiting from a guaranteed 2.5% return on your investment. 3. Performance-Based Contracting This flexible contract allows you to set your personal usage periods for the following year until September 30th. This model offers a shared opportunity for success and risk, with the income generated by your unit divided as follows: 60% of net income (after service costs, operator commissions and credit card fees) to you and 40% to the managing entity. 4. Purchase for Personal Use Only If you choose to purchase exclusively for personal use. Only 11 apartments available! 1 Bedroom apartments from €350,000 to €450,000 2 Bedroom apartments from €875,000 to €1,025,000.00 Just 500 meters from the Marina, 5 minutes from Via do Infante (A22), 50 minutes from Faro International Airport and 2 and a half hours from Lisbon or Seville. Invest in one of the most attractive regions in Portugal! Energy Rating: C #ref:BL1204

Gallery



Telephone: +351 213 471 603
Email: info@portugalhomes.com

Praça da Alegria 1, 3rd Floor, 1250-004 Lisboa, Portugal Licence AMI - 14414 | APEMIP 5940



Additional Details

Telephone: +351 213 471 603
Email: info@portugalhomes.com

Praça da Alegria 1, 3rd Floor, 1250-004 Lisboa, Portugal Licence AMI - 14414 | APEMIP 5940



Site Floorplan

Telephone: +351 213 471 603
Email: info@portugalhomes.com

Praça da Alegria 1, 3rd Floor, 1250-004 Lisboa, Portugal Licence AMI - 14414 | APEMIP 5940

