



€360,000

Ref: **BL1190**

Commercial space with 65 m² of gross private area, standing out for its ceiling height, located in the Sé, Lisbon. Accor...

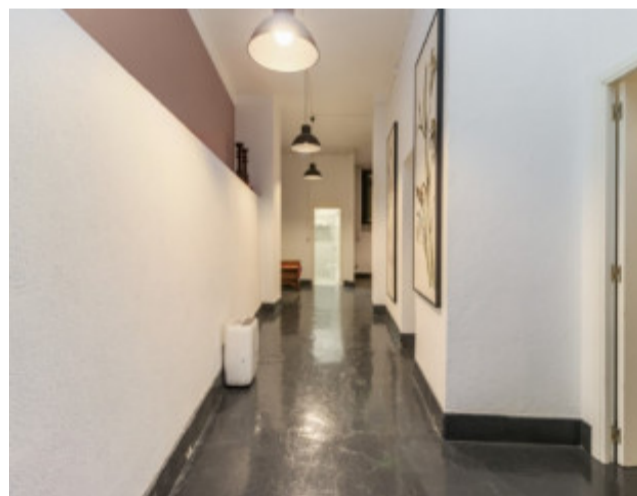
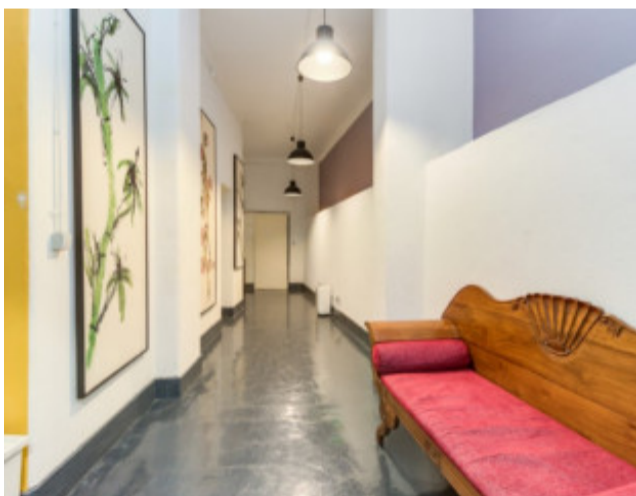
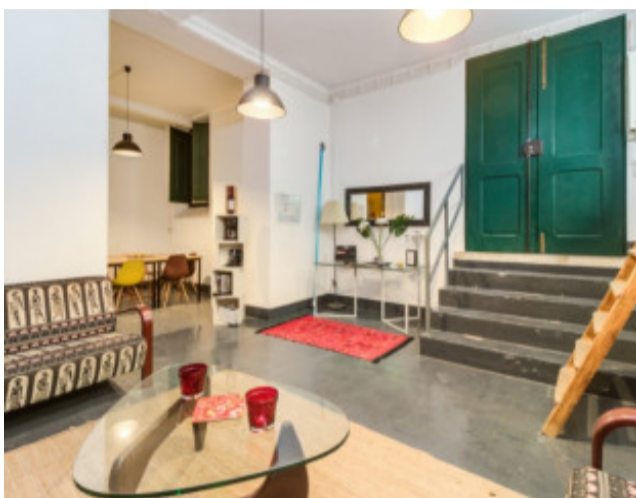
Telephone: +351 213 471 603
Email: info@portugalhomes.com

Praça da Alegria 1, 3rd Floor, 1250-004 Lisboa, Portugal Licence AMI - 14414 | APEMIP 5940



Property Description

Commercial space with 65 m² of gross private area, standing out for its ceiling height, located in the Sé, Lisbon. According to the new legislation, it can be converted into housing. Currently the property consists of an integrated living room with an open and equipped kitchen, complete bathroom, large bedroom and storage room. Located in the heart of Lisbon, it is close to several historical landmarks, such as the Church of Conceição Velha, the Cathedral and the Castle of São Jorge, as well as several restaurants and emblematic stores. It is just a 5-minute walk from Terreiro do Paço metro station and an 8-minute drive from Santa Apolónia station and Hospital de S. José. It is also 20 minutes from Humberto Delgado Airport. Energy Rating: B #ref:BL1190



Additional Details



Site Floorplan

