

€269,000

Ref: BL1059

57 sqm

Apartment with an excellent location, just 250 meters from Praia da Rocha in Portimão. Located on the 4th floor in the R...

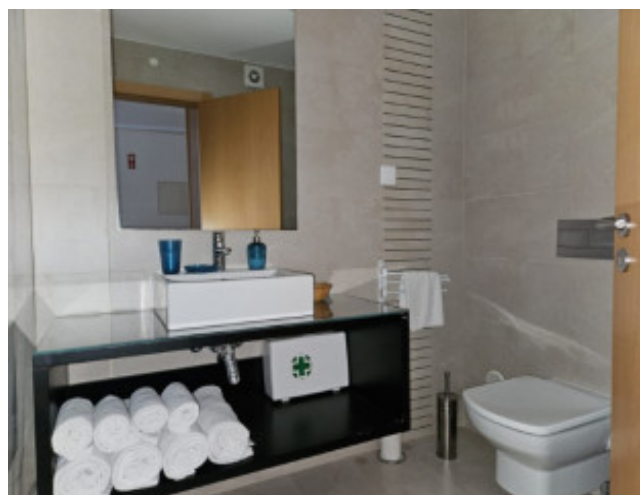
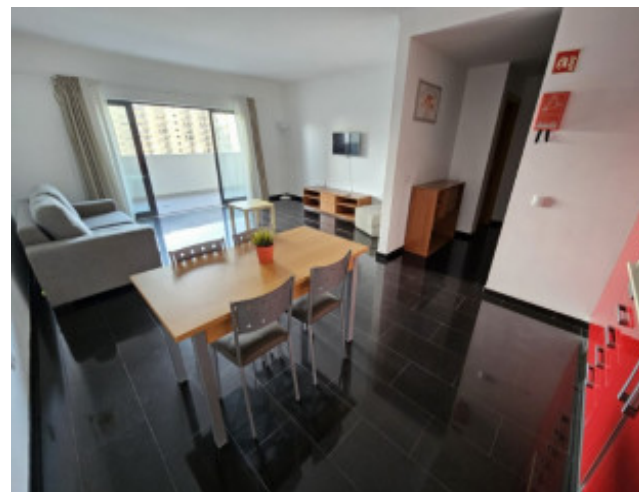
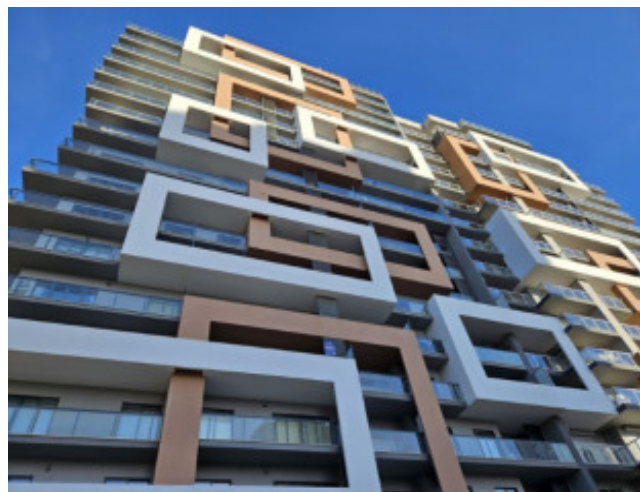
Telephone: +351 213 471 603
Email: info@portugalhomes.com

Praça da Alegria 1, 3rd Floor, 1250-004 Lisboa, Portugal Licence AMI - 14414 | APEMIP 5940



Property Description

Apartment with an excellent location, just 250 meters from Praia da Rocha in Portimão. Located on the 4th floor in the Rocha Tower building. It has an open space living room and kitchen, 1 bedroom with built-in wardrobe, 1 bathroom and 1 balcony common to the living room and bedroom. It is equipped with a water heater and a multi-split air conditioner for space heating and cooling. The kitchen is equipped with the following built-in appliances: oven, hob, extractor fan, fridge, microwave and washing machine. It also has one private parking space and the condominium swimming pool. The building has 2 elevators. Sold fully furnished! Energy Rating: C #ref:BL1059



Additional Details

Telephone: +351 213 471 603
Email: info@portugalhomes.com

Praça da Alegria 1, 3rd Floor, 1250-004 Lisboa, Portugal Licence AMI - 14414 | APEMIP 5940



Site Floorplan

