

€152,000

Ref: BL662(2)

Invest in real estate on the first line of the sea and in the West of Portugal! 5% rental guarantee during the first 3 y...

Telephone: +351 213 471 603
Email: info@portugalhomes.com

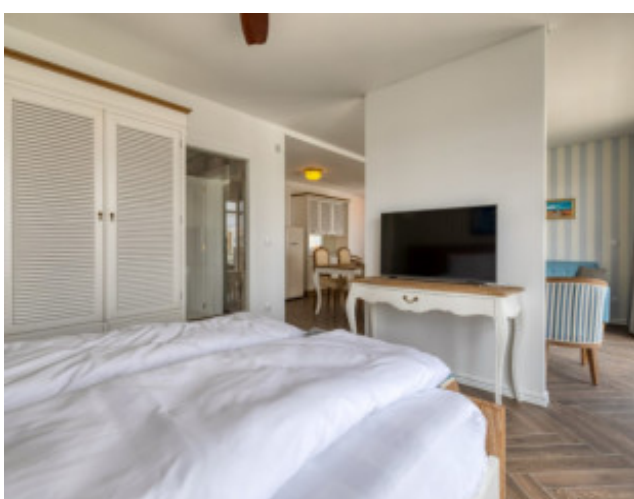
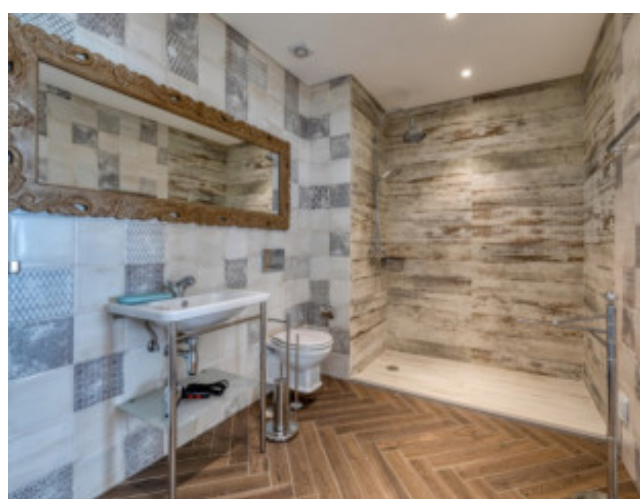
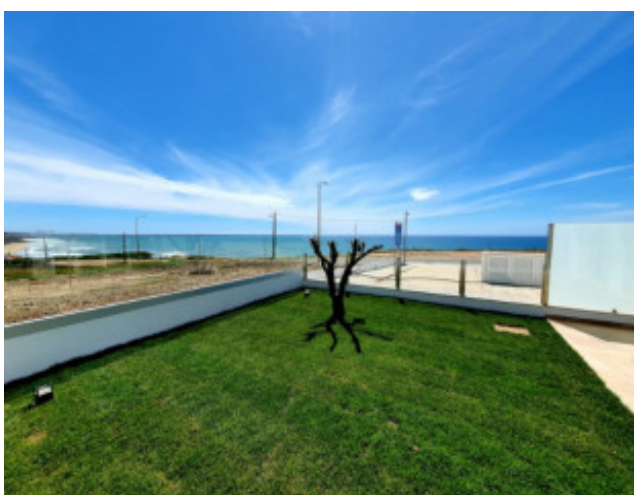
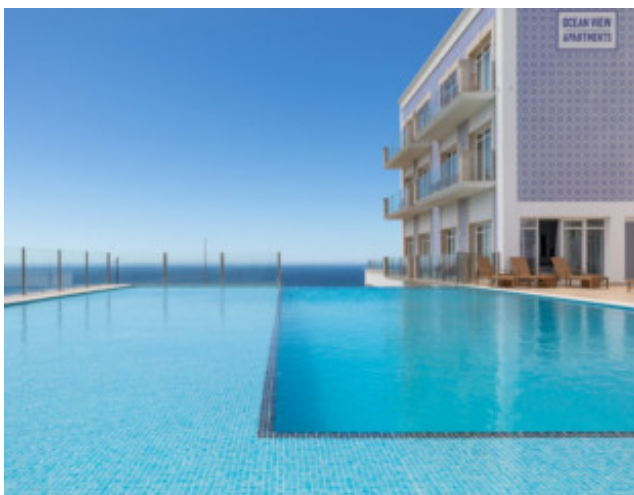
Praça da Alegria 1, 3rd Floor, 1250-004 Lisboa, Portugal Licence AMI - 14414 | APEMIP 5940



Property Description

Invest in real estate on the first line of the sea and in the West of Portugal! 5% rental guarantee during the first 3 years! The Ocean View Apartments on Areia Branca beach has 41 magnificent apartments in an exceptional location. It is a building full of character, with a facade that lives up to the Portuguese tradition of tiles, in a mix of charm and modernity. The condominium has a gym, restaurant with terrace and panoramic pool. In this paradise by the sea planted, you can enjoy a wonderful sea view, as well as good materials and finishes. The apartments are air conditioned and are delivered fully furnished, decorated and with parking space outside. Owner can use it for 6 weeks. 3 of them can be on July or August. Located 400m from Vale dos Frades beach and Areia Branca beach, close to Lourinhã and the famous Jurassic park. Baleal and Peniche with their immense water sports and the famous surf spots are 20 minutes away. Lisbon and the airport 50 minutes away. Condominium fee is 95€/month, including Internet, heated swimming pool and gym. There are still some apartments available and prices vary between €152,000.00 and €288,000.00. The expression 'Location, location, location' comes to life in this place! Come and find out more. Visit the place ... you won't want to leave! Energy Rating: B #ref:BL662(2)

Gallery



Telephone: +351 213 471 603
Email: info@portugalhomes.com

Praça da Alegria 1, 3rd Floor, 1250-004 Lisboa, Portugal Licence AMI - 14414 | APEMIP 5940



Additional Details

Telephone: +351 213 471 603
Email: info@portugalhomes.com

Praça da Alegria 1, 3rd Floor, 1250-004 Lisboa, Portugal Licence AMI - 14414 | APEMIP 5940



Site Floorplan

