



€635,000

Ref: BL880

151 sqm

Fantastic 3-bedroom apartment integrated into a modern building. Located right in the center and in a prestigious area o...

Telephone: +351 213 471 603
Email: info@portugalhomes.com

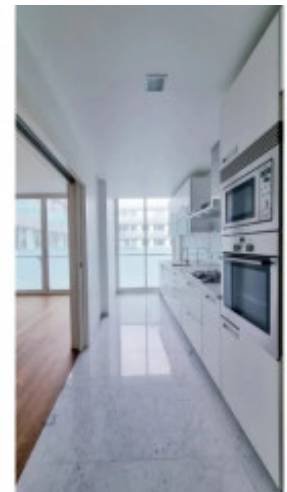
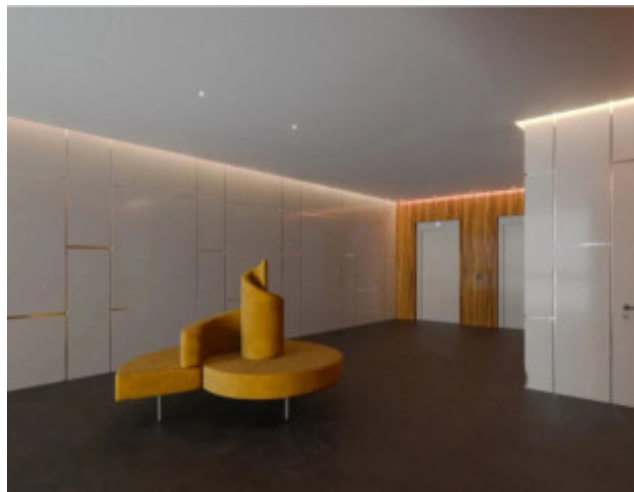
Praça da Alegria 1, 3rd Floor, 1250-004 Lisboa, Portugal Licence AMI - 14414 | APEMIP 5940



Property Description

Fantastic 3-bedroom apartment integrated into a modern building. Located right in the center and in a prestigious area of centrality in the city. We find around it: the gardens of Parque de Santa Catarina, the Marina and Porto de Recreio do Funchal, schools, pharmacies, private health clinics, shops and various services. This apartment consists of 1 suite and 2 bedrooms, 3 toilets, kitchen with built-in utility room and living room, with top quality finishes. With good sun exposure, this apartment has a private gross area of 150.80 m² and a dependent gross area of 51.30 where the double parking located in the basement of the building on the -7 floor and a generous balcony with 24.45 m² stand out. Built and licensed in 2008, it has LU n° 171 of April 24, it has excellent construction and high-quality finishes. Living on the island of Madeira is like living in paradise. After all, being surrounded by so much natural beauty is one of the most enjoyable things you can have in life. Its forest is declared a World Heritage Site by Unesco. Two things that you will definitely have when living in Madeira are quality of life and security. By the way, if you decide to live in Portugal, you will definitely have these two things, regardless of the place. Energy Rating: C #ref:BL880

Gallery



Telephone: +351 213 471 603
Email: info@portugalhomes.com

Praça da Alegria 1, 3rd Floor, 1250-004 Lisboa, Portugal Licence AMI - 14414 | APEMIP 5940



Additional Details

Telephone: +351 213 471 603
Email: info@portugalhomes.com

Praça da Alegria 1, 3rd Floor, 1250-004 Lisboa, Portugal Licence AMI - 14414 | APEMIP 5940



Site Floorplan

