



€1,500,000

Ref: PW2805

269 sqm

Excellent Vila in Colares, Sintra

- Outside
- A/C
- Alarm
- Pool
- Gym
- Amenities
- Suite

Telephone: +351 213 471 603
Email: info@portugalhomes.com

Praça da Alegria 1, 3rd Floor, 1250-004 Lisboa, Portugal Licence AMI - 14414 | APEMIP 5940



Property Description

Colares is a small Portuguese village situated between Serra de Sintra and some of the most beautiful and well-known Portuguese beaches, such as the Azenhas do Mar or Praia das Mações .It is privileged to have as a backdrop the Serra de Sintra, and continues the combination of nature with the predominant vineyards. In fact, the parish of Colares is also well known for its wines and the famous Colares winery. It is also possible to admire its historical and heritage richness, characterized by the beautiful churches, the mansions of the old farms and the typical chalets of the late 19th century. XIX. Its streets allow pleasant and refreshing walks, always accompanied by the view of Peninha and Pena Palace.

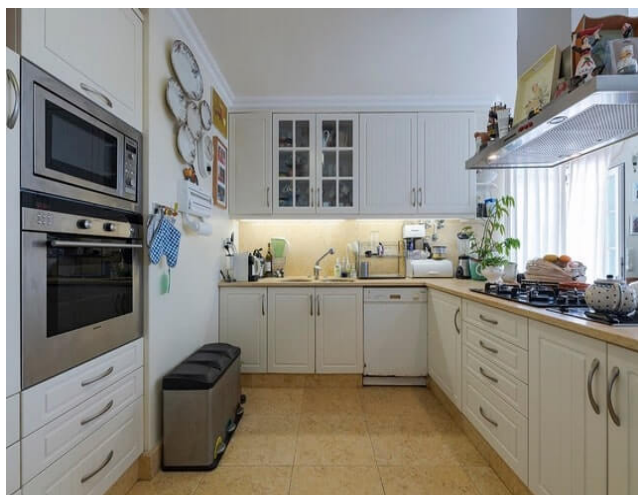
There is this magnificent 4 bedroom villa, single storey, located a few minutes walk from the local trade and the beach. The house has been completely recovered and enlarged , using high quality materials. The villa is equipped with underfloor heating, electric blinds, solar panels. Outside there is also a beautiful garden with swimming pool, spa, dining area and garage.

Check our [properties for sale in Colares](#) and [houses around Sintra](#).

Get familiar with the area and read our [guide to Sintra here](#).

Please contact us today to arrange a viewing of this splendid property !

Gallery



Telephone: +351 213 471 603
Email: info@portugalhomes.com

Praça da Alegria 1, 3rd Floor, 1250-004 Lisboa, Portugal Licence AMI - 14414 | APEMIP 5940



Additional Details

Attributes

<div>Status</div> <div>Sold</div>	<div>Net Area</div> <div>269sq m</div>	<div>Gross Area</div> <div>269sq m</div>
<div>Condition</div> <div>Refurbished</div>		

Property Features

<div>Outside</div>	<div>Pool</div>	<div>Amenities</div>
<div>A/C</div>	<div>Gym</div>	<div>Suite</div>
<div>Alarm</div>		

Site Floorplan

