



The Arrochela

€0

Ref: PW2114

The Arrochela development offers five apartments in the heart of historical Lisbon and close to Principe Real.

- Heating
- Garden
- Gym
- Fireplace
- Street Parking

Telephone: +351 213 471 603
Email: info@portugalhomes.com

Praça da Alegria 1, 3rd Floor, 1250-004 Lisboa, Portugal Licence AMI - 14414 | APEMIP 5940



Property Description

Welcome to The Arrochela!

An exciting new development in the centre of the city, The Arrochela neighbours the historical landmarks of the Sao Bento Palace and the Republican Assembly and it is just a few minutes walk from Principe Real.

Principe Real provides the very best that Lisbon has to offer. Open terraces spill out into lush green parks (including the famous Botanical Gardens) organic outdoor markets offer the very best of Portuguese products, International Schools are withing a few minutes drive. Exclusive restaurants and trendy brunch cafes wait to be discovered.

Investing close to Principe Real offers favourable and dependable capital appreciation. As the place to be in Lisbon, expect high occupancy throughout the 12 months of the year.

The development consists of just five apartments. All are one bedroom units with the exception of the penthouse which has two bedrooms.

Investors can enjoy an optional Guaranteed return of 3% for 4 years from the time of completion. A rare and welcome opportunity for remote Investors to take advantage of.

Distances to local points of interest

: The Republican Assembly and the Palace of Sao Bento is just 290 metres or 4 minutes walk away.

: The Gardens of Principe Real are just 550 metres or 6 minutes walk away.

: The British Council of Lisbon is just 500 metres or 6 minutes walk away.

: The central park of ' Parque Estrela' with its cycle paths, restaurants, children's play areas and outdoor events is just 700 metres or 9 minutes walk away.

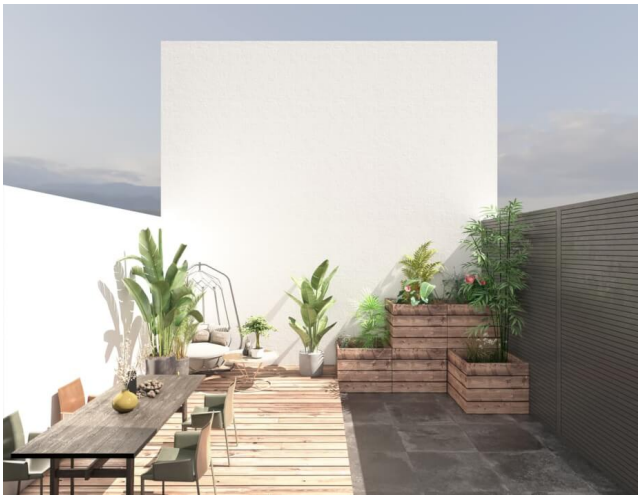
: The Metro's Blue and Green Line connect at Chiado Metro Station. This is 900 metres or 12 minutes walk away.

: A selection of bars, restaurants, supermarkets and shops are within a few minutes walk from the front door.

For more information on The Arrochela Development, please contact Portugal Homes today!

Find our other [properties in Principe Real](#) and [houses around Lisbon](#). You can also [read our guide to Lisbon here](#).

Gallery



Additional Details

Property Features

Heating	Garden	Gym
Fireplace	Street Parking	

New Development Features

Development Units

Fraction	Bedrooms	Floor Size	Price
Unit A	1	36 sqm	Sold
Unit B	1	46 sqm	Sold
Unit C	1	39 sqm	Sold
Unit D	1	36 sqm	Reserved
Unit E	2	64 sqm	Sold

Site Floorplan

