



Fervença Palace Apartments

€508,250 -
€608,000

Ref: PW2066

The timeless elegance of the Palace of Fervença stems from the rehabilitation project of a 18th century building. Authored by the architecture studio Saraiva e Associados.

- Ocean View
- Storage
- Lift
- Outside
- Concierge Service
- Garden
- Seaside
- Closed Condominium
- Balcony

Telephone: +351 213 471 603
Email: info@portugalhomes.com

Praça da Alegria 1, 3rd Floor, 1250-004 Lisboa, Portugal Licence AMI - 14414 | APEMIP 5940



Property Description

The timeless elegance of the Palace of Fervença stems from the rehabilitation project of a 18th century building.

Authored by the architecture studio Saraiva e Associados, the rehabilitation preserves many of the unique architectural features of the building. The Fervença Palace is located on the bank of the Douro River, with its south-facing façade, which allows an excellent sun exposure and superb views of the river and the city.

The project comprises two autonomous buildings, the renovated Palace and a new structure, separated by a magnificent private internal garden. Inside the renovated Palace, most units include mezzanines, highlighting the original double foot.

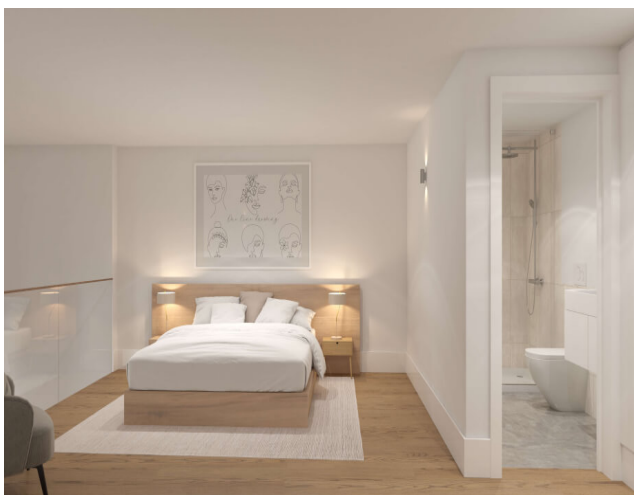
In addition to the unique views, the Palace of Fervença is within walking distance of the main points of interest of Porto such as its historical Downtown, the traditional port wine cellars, the D. Luís bridge, the See, among others. The Palace of Fervença is being modernized in a state-of-the-art structure with 17 residential units.

Apartments range from 41.18 to 156.04 m², with studios, 1 and 2 bedrooms. All apartments include air conditioning, double-glazed windows, a fully equipped kitchen and can be fully furnished. Most residential units have fantastic views of the Douro River and the city of Porto. The apartments have the possibility of having associated a fixed return and can be sold fully decorated and furnished.

All images are used for illustrative purposes only and are intended to show the concept and vision for this venture.

You can also view all our [properties for sale in Porto and around](#) and read more about the area in our [Porto guide](#).

Gallery



Telephone: +351 213 471 603
Email: info@portugalhomes.com

Praça da Alegria 1, 3rd Floor, 1250-004 Lisboa, Portugal Licence AMI - 14414 | APEMIP 5940



Additional Details

Attributes

Condition		
Under Construction		

Property Features

Ocean View	Outside	Seaside
Storage	Concierge Service	Closed Condominium
Lift	Garden	Balcony
Gym	Fireplace	Security
Street Parking	Outdoor Parking	Covered Parking

New Development Features

Development Units

Fraction	Bedrooms	Floor Size	Price
UNIT 001	0	116 sqm	Sold
UNIT 002	0	130 sqm	€608,000
UNIT 101	2	78 sqm	€548,000
UNIT 102	0	41 sqm	Sold
UNIT 103	2	83 sqm	€579,800
UNIT 201	0	54 sqm	Sold
UNIT 202	0	60 sqm	Sold
UNIT 203	0	67 sqm	Sold
UNIT 204	0	68 sqm	Sold
UNIT 205	0	66 sqm	€508,800
UNIT 301	0	42 sqm	Sold
UNIT 302	0	54 sqm	Sold
UNIT 303	0	54 sqm	Sold
UNIT 304	0	57 sqm	Sold
UNIT 305	0	61 sqm	€508,250
UNIT 401	2	74 sqm	€588,000
UNIT 402	2	81 sqm	Sold

Site Floorplan

