



€275,000

Ref: PW171

65 sqm

Investment opportunity in the center of Lisbon

Telephone: +351 213 471 603
Email: info@portugalhomes.com

Praça da Alegria 1, 3rd Floor, 1250-004 Lisboa, Portugal Licence AMI - 14414 | APEMIP 5940



Property Description

This property is located in the heart of Estrela, just a few meters away from the English Embassy and the National Parliament.

In this calm residential area, you are a few minutes walking distance from the vibrant and trendy neighborhood of Principe Real, with charming restaurants, coffee shops, design and antique shops and enchanting gardens.

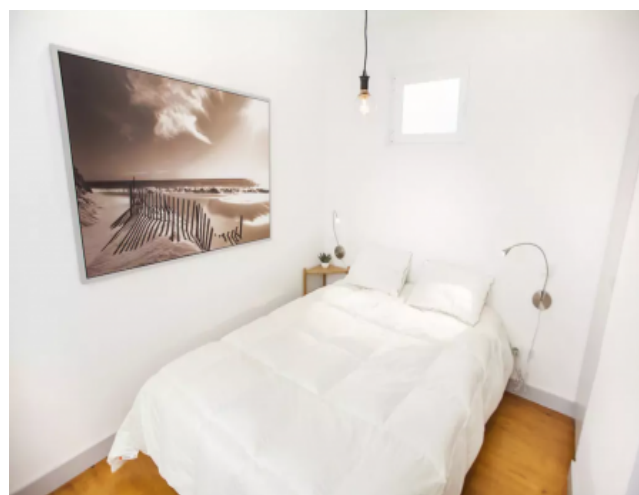
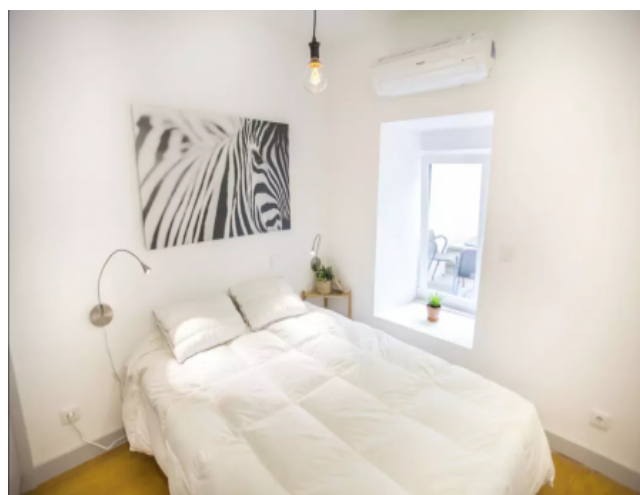
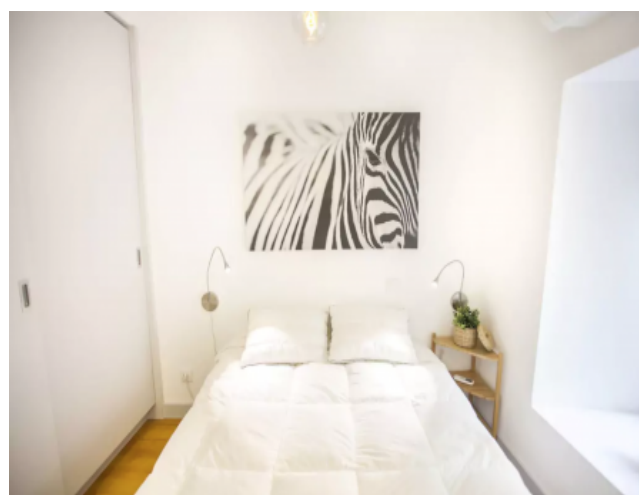
This property features 2 bedrooms, 1 bathroom, a sunny living room with an open and fully equipped kitchen. It also has a small terrace. It includes the furniture as well.

It's a great investment opportunity with a steady income.

Check our full offer of [properties for sale in Lisbon](#) and [Estrela neighbourhood](#).

Also, have a look at our [guide to Lisbon](#) and [explore Lapa-Estrela](#).

Gallery



Telephone: +351 213 471 603
Email: info@portugalhomes.com

Praça da Alegria 1, 3rd Floor, 1250-004 Lisboa, Portugal Licence AMI - 14414 | APEMIP 5940



Additional Details

Telephone: +351 213 471 603
Email: info@portugalhomes.com

Praça da Alegria 1, 3rd Floor, 1250-004 Lisboa, Portugal Licence AMI - 14414 | APEMIP 5940



Site Floorplan

