

€325,000

Ref: PW1550

150 sqm

A home in village of villas in Albufeira. Three floors of renovated perfection offering ideal family relocation in a friendly residential neighborhood near the sea.

- Outside
- Storage
- Garden
- Suite
- Amenities
- Concierge Service
- Gym
- Alarm
- Heating
- Closed Condominium
- Fireplace

Telephone: +351 213 471 603
Email: info@portugalhomes.com

Praça da Alegria 1, 3rd Floor, 1250-004 Lisboa, Portugal Licence AMI - 14414 | APEMIP 5940



Property Description

This renovated triplex house offers modern design and comfort on every level.

Balconies, gardens on the front and back, ample parking space, a spacious BBQ area overlooking the garden, winter warmth by the fireplace, air conditioning and a mass of storage space providing a modern and uncluttered living environment.

From the top, The upstairs 'loft' crowns the house with an enormous double bedroom occupying the entire floor. Complete with en-suite bathroom, office space and sky balcony with views and space for sun-decks or garden furniture. The top floor also provides four deep 'eves' storage units allowing the whole household a modern and uncluttered living environment.

Upon entrance (the middle floor) you are met with 3 double bedrooms, the rear facing master bedroom enjoys a modern en-suite bathroom together with a spacious balcony. Next to the master bedroom is another double room with access to the same balcony. The third bedroom faces the front garden. All bedrooms are complete with fitted storage units.

The lower floor spills out onto the rear garden. The enormous living room features a fireplace and connects with the roofed garden-facing BBQ area double sliding doors facilitate the 35m2 Garden, summer events for all weather conditions.

The kitchen area is fitted with all new appliances, a brick-walled finish and shiny solid counter tops.

Plenty of natural light shines through each floor of this complete family home.

Location

Albufeira is home to an International melting pot of relocation families and foreign investment opportunists. It's beaches face out to North Africa and enjoy the very best of the Portuguese climate and coastlines. A blend of the traditional and the developed. Take your pick from the old town ' fisherman's village' with it's family-run local restaurants, tucked-away cocktail bars and stone stages of seasoned street entertainers.

In days before, Albufeira had a harbour and a Marine, The Praia dos Pescadores was where all the local fishermen operated from and the beach scene would have been very different to the site you see today.

Then the beach would have been full of brightly painted fishing boats pulled up onto golden beaches and much of the tourist activities took place on the Praia do Túnel. Today the Praia dos Pescadores is now booming with tourism and fresh business initiatives.

Whatever you are looking for in The Algarve, whether it be simply the sun, sand and sea or a year round place to 'get busy' Albufeira has it all.

Distances to local points of interest

: Faro Airport is 35 minutes drive away.

: Albufeira old town is 7 minutes drive away.

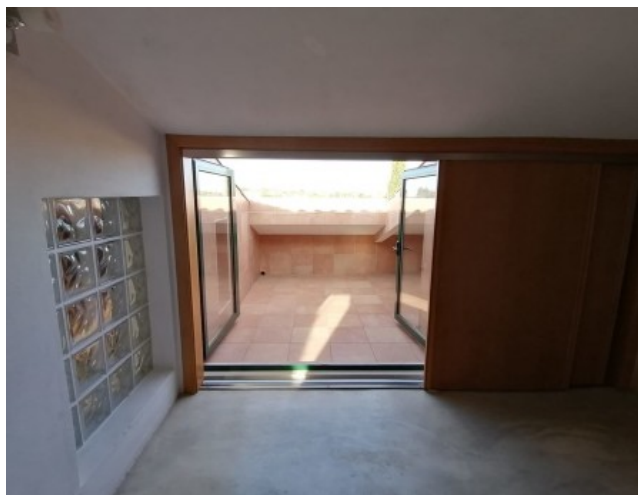
: Albufeira Marina is 13 minutes drive away.

: Albufeira English Speaking Hospital is 600 metres or 7 minutes walk away.

: Nobel International School is 23 minutes drive away.

Contact Portugal Homes today for more information on this place in the sun!

Gallery



Telephone: +351 213 471 603
Email: info@portugalhomes.com

Praça da Alegria 1, 3rd Floor, 1250-004 Lisboa, Portugal Licence AMI - 14414 | APEMIP 5940



Additional Details

Attributes

Status Sold	Net Area 150sq m	Gross Area 185sq m
Floors 3	Condition Refurbished	

Property Features

Outside	Amenities	Heating
Storage	Concierge Service	Closed Condominium
Garden	Gym	Fireplace
Suite	Alarm	Street Parking
Outdoor Parking		

Site Floorplan

