



€298,000

Ref: PW1538

54 sqm

Excellent Duplex apartment in Santa Maior Maior.

- Concierge Service
- Alarm
- Balcony
- Street Parking
- Fireplace
- Outdoor Parking

Telephone: +351 213 471 603
Email: info@portugalhomes.com

Praça da Alegria 1, 3rd Floor, 1250-004 Lisboa, Portugal Licence AMI - 14414 | APEMIP 5940



Property Description

Excellent Duplex apartment with storage room and private parking space (automatic gate) in the center of Lisbon, located in the parish of Santa Maria Maior, between Mouraria and Baixa Pombalina (parking area for residents).

Apartment with 73M2 (54 + 19), inserted in a building with elevator. Very bright property (2 exterior walls in pvc and glass), with high ceilings (no use of attic), without hidden areas, wide stairs and an excellent view of the parking lot over the city of Lisbon with 1 bedroom apartment transformed into T2 with living room / kitchen, 2 bedrooms (1 with built-in wardrobe and private bathroom / 1 with walk-in-closet and private bathroom) and service bathroom (3 in total, all with suspended dishes).

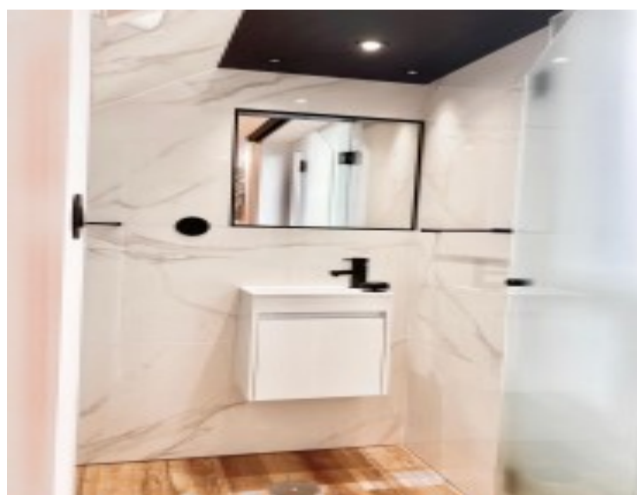
Root remodeling (water, electricity and sewage) and of enormous quality: Floating floor “Best Floor”; PVC with double-glazed “Veka” frames with thermal cut; “Daikin” air conditioning with low consumption and accessible by APP; “Magrés” mosaics; Low consumption “Nowodvorski” lamps; “Siza Vieira” switches and socket.

Electric shutters made to measured, Video intercom.

Kitchen “Teka” (washing machine / dryer, dishwasher, electric hob, microwave oven, extractor hood, refrigerator, sink and tap), “Silstone” stone countertop and 'Vulcano' water heater.

To book a viewing or for more information on this property, please contact us today!

Gallery



Telephone: +351 213 471 603
Email: info@portugalhomes.com

Praça da Alegria 1, 3rd Floor, 1250-004 Lisboa, Portugal Licence AMI - 14414 | APEMIP 5940



Additional Details

Attributes

<div>Status</div> <div>Pre-Reserved</div>	<div>Net Area</div> <div>54sq m</div>	<div>Gross Area</div> <div>54sq m</div>
<div>Condition</div> <div>New</div>		

Property Features

<div>Concierge Service</div>	<div>Balcony</div>	<div>Fireplace</div>
<div>Alarm</div>	<div>Street Parking</div>	<div>Outdoor Parking</div>

Site Floorplan

