

€530,000

Ref: PW1420

44 sqm

Stunning studio apartment in the heart of Restauradores.

- Heating
- Garden
- Outdoor Parking
- A/C
- Balcony
- Storage
- Fireplace

Telephone: +351 213 471 603
Email: info@portugalhomes.com

Praça da Alegria 1, 3rd Floor, 1250-004 Lisboa, Portugal Licence AMI - 14414 | APEMIP 5940



Property Description

Praça dos Restauradores is a square in the central Baixa region of Lisbon. Around the square are a number of the city's most iconic buildings, including the Italianate pink façade of the Palácio Foz and the Teatro Eden and Condes Cinema buildings, both fine examples of Art Deco architectural style.

The rectangular square is surrounded by 19th and early 20th century buildings. The most remarkable are the Palácio Foz, a palace built between the 18th and 19th centuries and boasting magnificently decorated interiors, and the old Éden Cinema (now a hotel), with a beautiful Art Deco façade dating from the 1930s, a work by architect Cassiano Branco.

Surrounded by a large list of resources; a **pharmacy, theaters, supermarkets, and public transportation**; which makes studio an amazing place and well located.

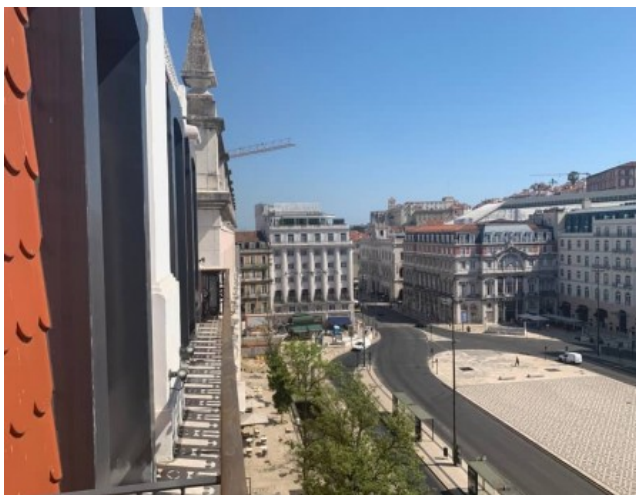
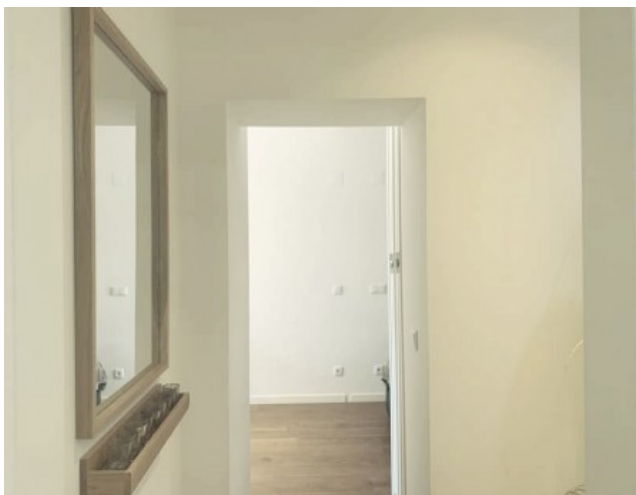
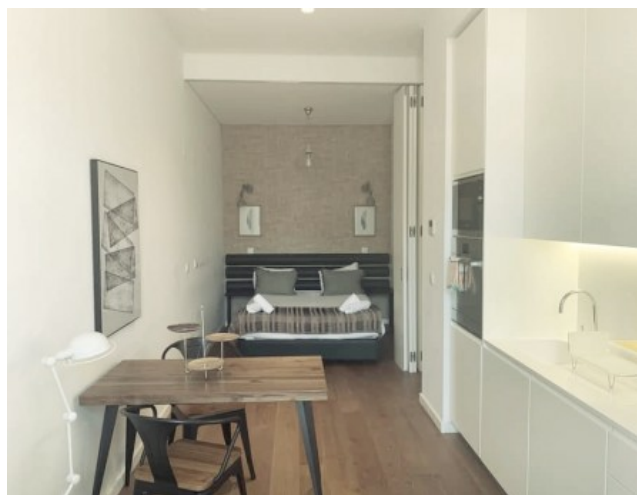
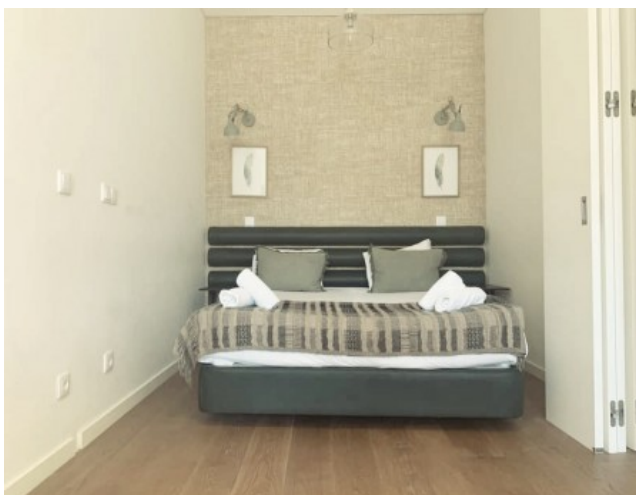
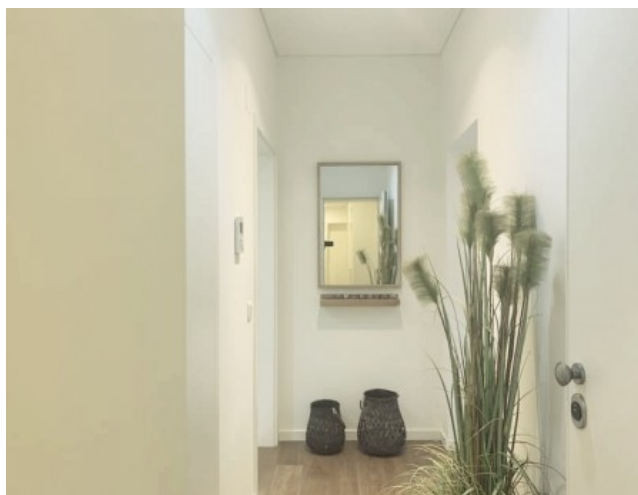
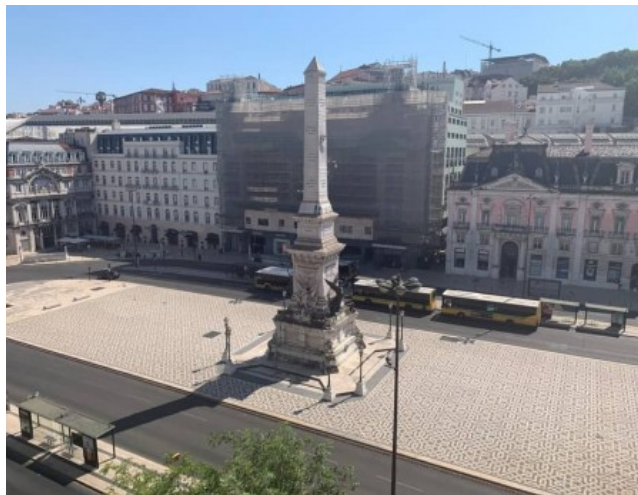
The studio apartment with high end finishes recently renovated with 44,90sqm, fully equipped kitchen, air conditioning, balcony located close to the most renowned Avenue in Lisbon Avenida da Liberdade.

Feel free to find more information about this unique property and location through our team of experts, and **Find your Next Portugal Homes now!**

Check our offer of available [properties for sale in Lisbon](#) and [Baixa neighbourhood](#).

Also, read our [guide to Lisbon](#) and [explore Baixa](#).

Gallery



Telephone: +351 213 471 603
Email: info@portugalhomes.com

Praça da Alegria 1, 3rd Floor, 1250-004 Lisboa, Portugal Licence AMI - 14414 | APEMIP 5940



Additional Details

Attributes

| | | |
|--|---------------------------------------|---|
| <div>Status</div> <div>Available</div> | <div>Net Area</div> <div>44sq m</div> | <div>Gross Area</div> <div>44sq m</div> |
| <div>Floors</div> <div>5</div> | <div>Condition</div> <div>New</div> | |

Property Features

| | | |
|----------------------------|--------------------|----------------------|
| <div>Heating</div> | <div>A/C</div> | <div>Storage</div> |
| <div>Garden</div> | <div>Balcony</div> | <div>Fireplace</div> |
| <div>Outdoor Parking</div> | | |

Site Floorplan

