



# €699,000

Ref: PW1380

327 sqm

Lovely modern 4 bedrooms villa with sea views located in a quiet village just 10 minutes away from Vilamoura.

- Ocean View
- Amenities
- Gym
- Outside
- Closed Condominium
- Suite
- Pool
- Garden
- Alarm

Telephone: +351 213 471 603  
Email: [info@portugalhomes.com](mailto:info@portugalhomes.com)

Praça da Alegria 1, 3rd Floor, 1250-004 Lisboa, Portugal Licence AMI - 14414 | APEMIP 5940





## Property Description

Lovely modern 4 bedroom villa with spectacular sea views located in a quiet village just 10 minutes away from Vilamoura.

This property offers 4 spacious bedrooms with one of them ensuite. Big modern kitchen with a dining area and direct access to the pool through sliding doors.

The living room is South facing with a cozy fireplace.

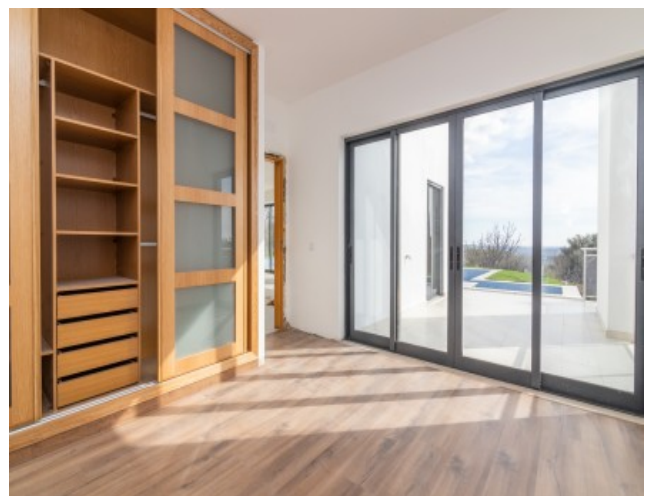
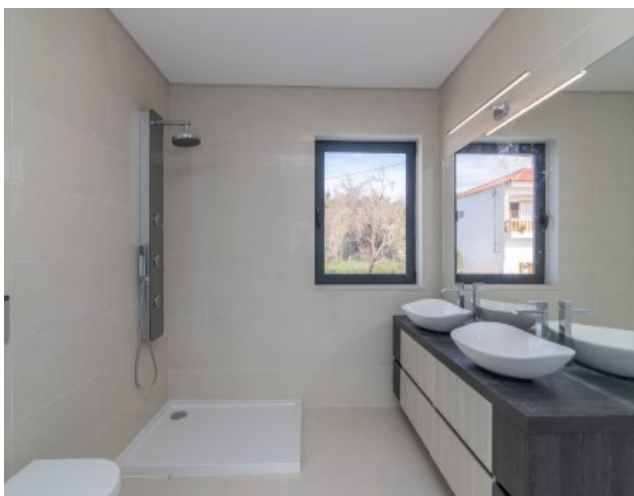
This property also offers solar hot water, pre-installation for AC, electric shutters, garage for 3 cars and roof terrace with spectacular views.

### About Boliqueime

Boliqueime is a charming village that belongs to Loule district. It is located just minutes away from Vilamoura and all golf courses.

Its history backs to the 12th century where is started being popular for its charming location near the ocean.

The center of the village offers a square with the main church. It was fully rebuilt after the earthquake in 1755.





Telephone: +351 213 471 603  
Email: [info@portugalhomes.com](mailto:info@portugalhomes.com)

Praça da Alegria 1, 3rd Floor, 1250-004 Lisboa, Portugal Licence AMI - 14414 | APEMIP 5940

## Additional Details

### Attributes

<b>Status</b> Sold	<b>Net Area</b> 327sq m	<b>Gross Area</b> 327sq m
<b>Floors</b> 3	<b>Condition</b> New	<b>Year Built</b> 2009

### Property Features

Ocean View	Outside	Pool
Amenities	Closed Condominium	Garden
Gym	Suite	Alarm
Street Parking	Outdoor Parking	

# Site Floorplan