



€360,000

Ref: PW1362

50 sqm

2 Bedroom Apartment.

- Pool
- Heating
- Closed Condominium
- Garden
- Gym

Telephone: +351 213 471 603
Email: info@portugalhomes.com

Praça da Alegria 1, 3rd Floor, 1250-004 Lisboa, Portugal Licence AMI - 14414 | APEMIP 5940



Property Description

This apartment will be delivered completely renovated and features 2 bedrooms, 1 bathroom, additional storage space and a shared garden and pool with top floor unit. It also has a communal meeting room and the building has been completely renovated. Additional photos were included to show previous projects carried out by the same developer.

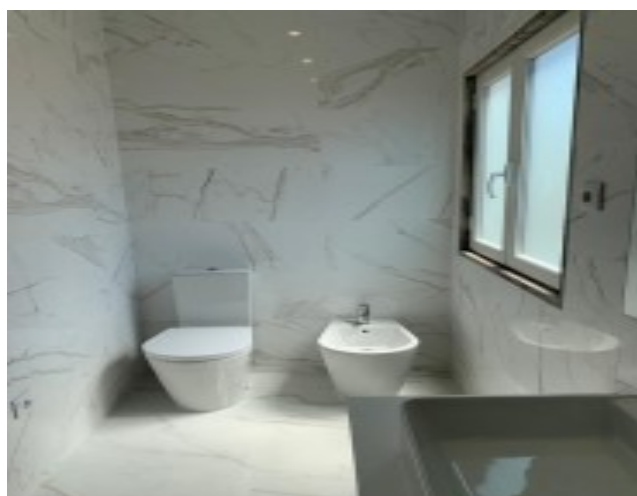
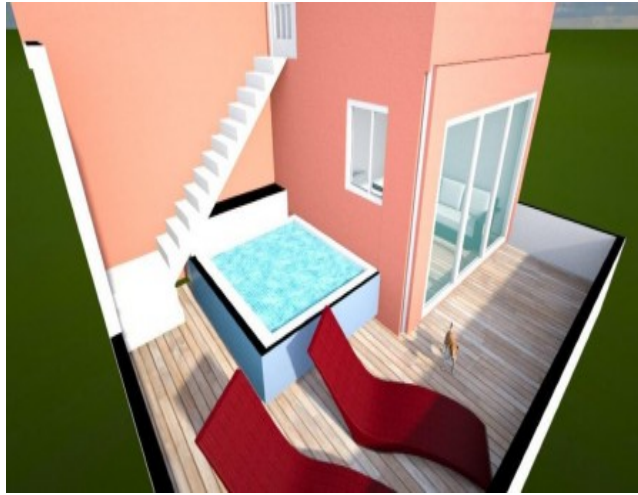
Exploring the area you can enjoy the famous Santa Clara (flea) Market, many amazing viewpoints like Miradouro da Graça and Nossa Senhora do Monte, delicious restaurants, pastry and coffee shops. It also offers good public transport, several schools and all the local commerce you can expect from a traditional residential area. Perfect as an investment or to start your new life in this historical and authentic neighbourhood of Lisbon.

If you would like more information about this opportunity, feel free to reach our team. We would be delighted to assist you!

You can also check our other property listings in [Lisbon](#) and [Graça](#).

If you consider moving to Portugal, read our [guides to Lisbon](#) and [area of Graça](#).

Gallery



Telephone: +351 213 471 603
Email: info@portugalhomes.com

Praça da Alegria 1, 3rd Floor, 1250-004 Lisboa, Portugal Licence AMI - 14414 | APEMIP 5940



Additional Details

Attributes

| | | |
|-----------------------------------|---------------------------------------|---|
| <div>Status</div> <div>Sold</div> | <div>Net Area</div> <div>50sq m</div> | <div>Gross Area</div> <div>50sq m</div> |
| <div>Floors</div> <div>1</div> | <div>Condition</div> <div>Used</div> | |

Property Features

| | | |
|-------------------|--------------------|-------------------------------|
| <div>Pool</div> | <div>Heating</div> | <div>Closed Condominium</div> |
| <div>Garden</div> | <div>Gym</div> | |

Site Floorplan

