

# €360,000

Ref: PW1294

81 sqm

A complete 2 bedroom apartment in excellent condition and in practical location. A recent building with underground parking and large communal terrace.

• Outside

• Amenities

• Heating

Telephone: +351 213 471 603  
Email: [info@portugalhomes.com](mailto:info@portugalhomes.com)

Praça da Alegria 1, 3rd Floor, 1250-004 Lisboa, Portugal Licence AMI - 14414 | APEMIP 5940



## Property Description

Modern 2 bedroom apartment located on the 2nd floor of a building that was constructed in 2003.

The elevators service this 2nd floor apartment of a well maintained and recent building.

This property offers convenience in it's size, practicality and location and comes complete with internal parking space and seperate storage unit.

This 81m2 apartment is bright and with a modern, functional design and gives access to a large communal terrace space (as seen in the pictures)

Double Glazed windows, a ready kitchen that is fitted with appliances, a family bathroom with bath-tub. This property is ready for it's new owners.

: Laranjeiras, Telheiras and the City University Metro stations are within walking distance of this property. Laranjeiras is the Blue Line Metro that connects with all other metro lines in the city. The travel time to the most central Metro Station in the capital is just 9 minutes.

: The 'Loja Cidadao' is just 9 minutes walk from the apartment and is home to the service desks of all relevent service providers. The city's main hub for Passport issue, utility service functionality, contract management and registry services. A building of very high employment which would contribute to a high long - term rental occupancy.

:Colombo shopping centre is just 5 minutes drive away  
*Colombo shopping 'city' was once the largest shopping centre in Europe, Colombo is home to a Multi-screen cinema complex, internal gardens, an indoor bowling and amusement centre, children's play areas, 258 stores and 58 restaurants.*

: The Ismaili Center of Lisbon is just 5 minutes walk from the apartment.

: The Hospital of Santa Maria is the largest hospital in Lisbon, It is located just 4 minutes drive from the apartment.

: The English Speaking International Hospital of Luz is just 5 minutes drive from the apartment.

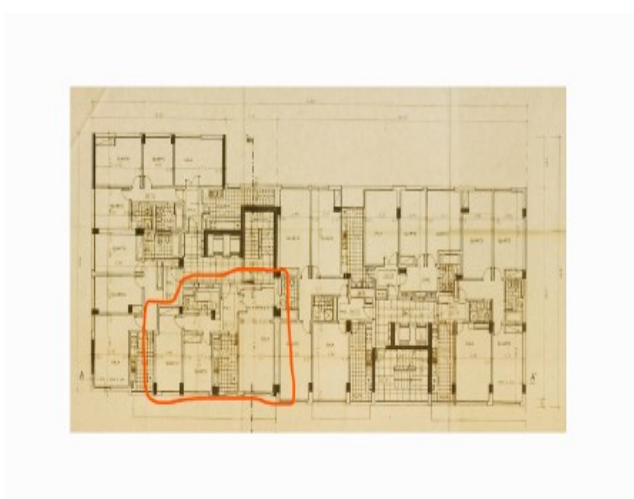
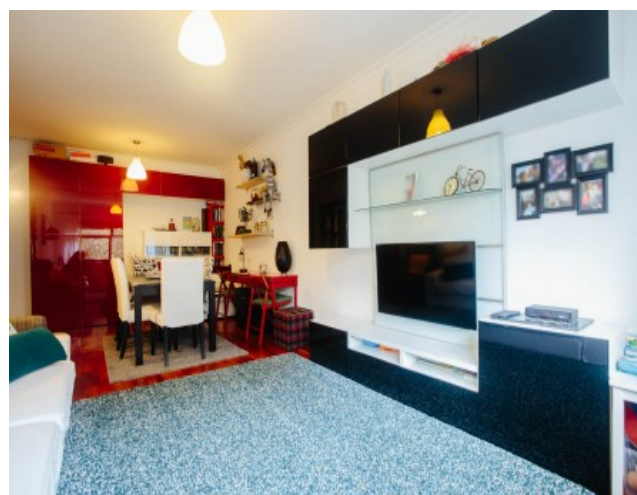
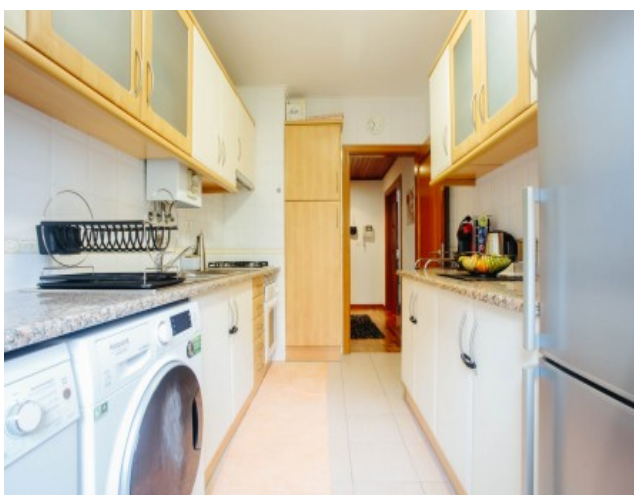
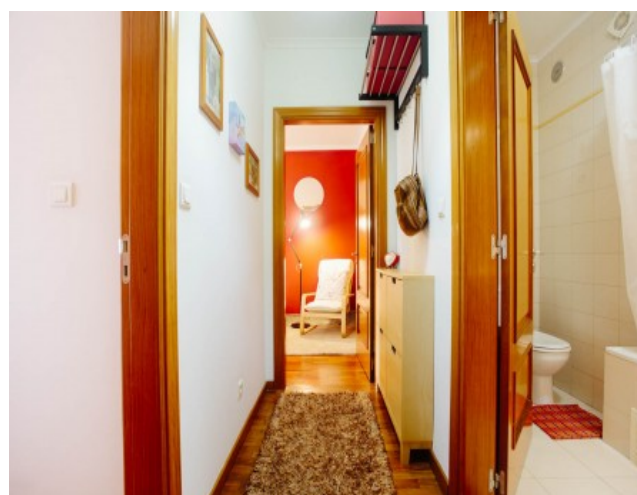
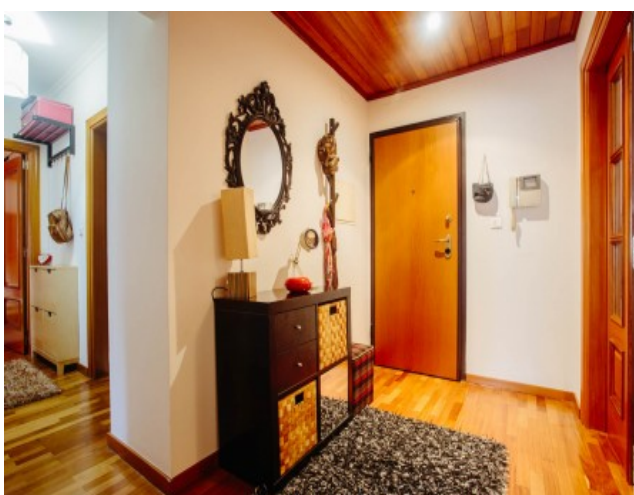
: A vast selection of both Portuguese and International restaurants are within walking distance of your doorstep.

: Easy access to Lisbon´s main roads: North-South axis with connection to A1 to North, A8 to West, A2 to South and A5 to Cascais; 2nd Circular / IC 19 with connection to Sintra or Vasco da Gama Bridge; direct access to Avenida Lusíada.

If you are looking for a ' Key Ready' investment or a practical and clean place to call home then look no further! Portugal Homes stands ready to welcome you into a culturally diverse and welcoming sector of the capital.



## Gallery



Telephone: +351 213 471 603  
Email: [info@portugalhomes.com](mailto:info@portugalhomes.com)

Praça da Alegria 1, 3rd Floor, 1250-004 Lisboa, Portugal Licence AMI - 14414 | APEMIP 5940



## Additional Details

### Attributes

<div>Status</div> <div>Sold</div>	<div>Net Area</div> <div>81sq m</div>	<div>Gross Area</div> <div>81sq m</div>
<div>Year Built</div> <div>2003</div>		

### Property Features

<div>Outside</div>	<div>Amenities</div>	<div>Heating</div>
--------------------	----------------------	--------------------

# Site Floorplan

