

2 Bed Property For Residential in City

Lisbon

2 Bedroom apartments with a 20m2 Terrace! Next to the famous Avenida da Roma. City-high living with short / mid and long term rental opportunities.

€325,000

Ref: PW1247

83m2 sqm

Telephone: +351 213 471 603
Email: info@portugalhomes.com

Avenida da Liberdade 67B, 5th Floor, 1250-140 Lisboa, Portugal Licence AMI - 14414 | APEMIP 5940



Property Description

A rare Golden Visa 350 option, this Duplex is located right next to the famous "Avenida de Roma"

This apartment qualifies for the Golden Visa 350 Program. The estimated cost of the works contract needed is approximately 50,000 Euros

Just a couple of minutes walk from the multiplex cinema venue, bars , restaurants and shops. Avenida da Roma has been a hot-spot for both lifestyle and investment into the capital for many years.

This 4th floor apartment offers two floors of generous space. The 20m2 High - Terrace is ideal for hosting guests on warm summers evenings.

Futhermore, the duplex offers two spacious bedrooms, 2 bathrooms and the outside space.

The Green Line Metro line provides easy access to all corners of the city. It's just 4 minutes walk from the apartment and serves the whole city in terms of connections.

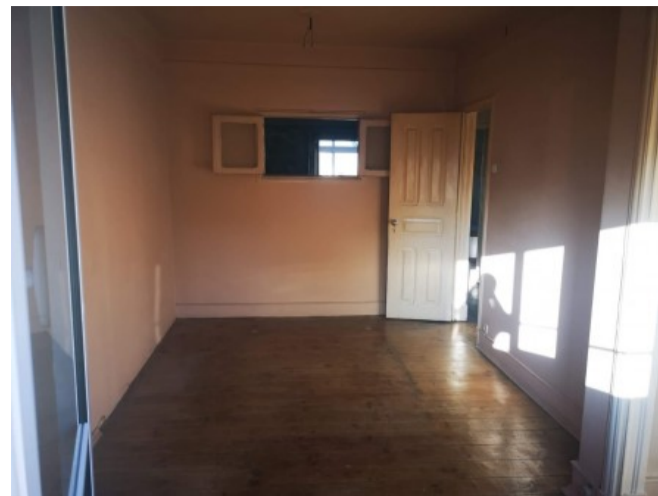
Avenida de Roma Train Station (Roma-Areeiro) serves the north and south of Lisbon and the country.

This location is both central and convenient, a top high duplex with large terrace in a favourable location in the city.

This apartment qualifies for a short term rental business. It is very likely that this district of lisbon will be disqualified very soon.

Call us today to learn more about this unique property option!

Gallery



Telephone: +351 213 471 603

Email: info@portugalhomes.com

Avenida da Liberdade 67B, 5th Floor, 1250-140 Lisboa, Portugal Licence AMI - 14414 | APEMIP 5940



Additional Details

Attributes

Status Available	Reception Rooms 2	Internal Area 83m2
Property Condition To be Refurbished		